

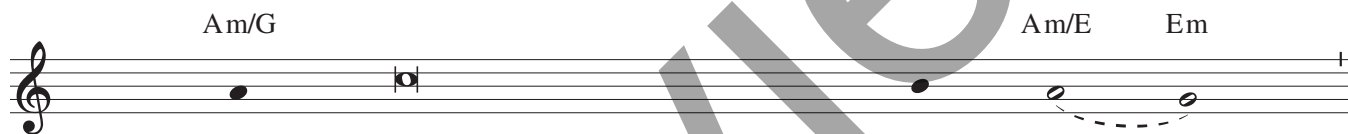
LENTEN INTROITS

INTROIT/VERSES: Cantor

G5



Ash Wednesday	You are You overlook	merciful to all, people's	O Lord, sins,
1st Sunday	When he I will	calls deliv	on me, er him
2nd Sunday	Of you my heart	has spoken:	Seek his face.
3rd Sunday	My eyes are	always on	the Lord,
4th Sunday	Rejoice, Be joyful,	Jeru all who were in	salem, mourn - ing;
5th Sunday	Give me From the	jus de - ceitful and cunning	tice, O God, res - cue me,
Processional verses	1. God	all	mer - ciful,
	2. Ev	erlast	ing God,
	3. Ev	erlast	ing life,



Ash Wed.	(to	bring them to	re - pen - tance,
1st Sun.	I	will	an - swer him;	
	and	give	him glo - ry,	
2nd Sun.	It is	your face, O Lord, that	I seek; _____	
3rd Sun.	for he	rescues my feet from	the snare. _____	
4th Sun.	and	all	who love her.	
	(_____	_____)
5th Sun.	and	plead my cause against a nation that	is faith - less.	
	(_____	_____)
Proc. vss.	1. bring	us to	re - pen - tance.	
	2. re	member now	your mer - cies	
	3. built	on	sac - ri - fice. _____	

Text: Introit antiphons © 2010, ICEL. All rights reserved. Used with permission.

Refrain and processional verses, Angela Birkhead-Flight, b. 1964, © 2010, Angela Birkhead-Flight. Published by OCP. All rights reserved.

Music: *Crux Fidelis*; adapt. by Angela Birkhead-Flight, © 2010, Angela Birkhead-Flight. Published by OCP. All rights reserved.

Ash Wed. and de - spise nothing that you have made.
 and you spare them, for you are the Lord our God.

1st Sun. (-----)

I will grant him length of days.

2nd Sun. hide not your face from me.

3rd Sun. Turn to me and have mercy on me, for I am a - lone and poor.

4th Sun. (-----)

ex - ult and be satisfied at her con - sol - ing breast.

5th Sun. (-----)

for you, O God, are my strength.

Proc. vss. 1. O - ver - look our sins, O Lov - ing God.

2. and your tenderness from a - ges past.

3. God be - stows on us his sav - ing power.

REFRAIN: All

We take up our cross, this no - ble tree. Our long - ing for its wood is

bit - ter - sweet, for by this sac - ri - fice we are freed.