

for my family/para mi familia

# Stanley Rother Mass/Misa Stanley Rother

## Penitential Act with Invocations/ Acto Penitencial con Invocaciones

Trumpet I & II in B-flat

CANTOR:

*freely*



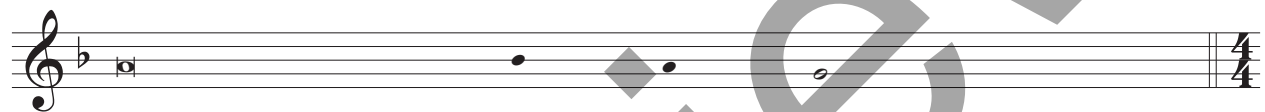
Musical notation for the first Cantor part, featuring a treble clef, a key signature of one flat (B-flat), and a 4/4 time signature. The notation includes a whole rest followed by a dotted half note and a whole note.

$\text{♩} = \text{ca. } 85$  ALL:



Musical notation for the first All part, featuring a treble clef, a key signature of one flat, and a 4/4 time signature. The notation includes a tempo marking of ca. 85 and a dynamic marking of mf. It consists of a melodic line with eighth and quarter notes, followed by a chordal accompaniment.

CANTOR:



Musical notation for the second Cantor part, featuring a treble clef, a key signature of one flat, and a 4/4 time signature. The notation includes a whole rest followed by a dotted half note and a whole note.

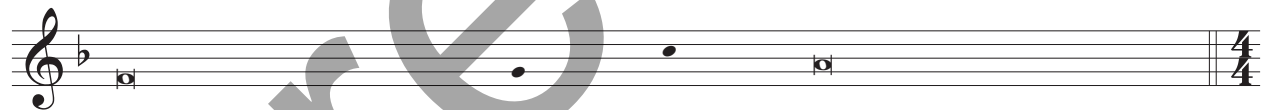
$\text{♩} = \text{ca. } 85$  ALL:

*mf*



Musical notation for the second All part, featuring a treble clef, a key signature of one flat, and a 4/4 time signature. The notation includes a tempo marking of ca. 85 and a dynamic marking of mf. It consists of a melodic line with eighth and quarter notes, followed by a chordal accompaniment.

CANTOR:



Musical notation for the third Cantor part, featuring a treble clef, a key signature of one flat, and a 4/4 time signature. The notation includes a whole rest followed by a dotted half note and a whole note.

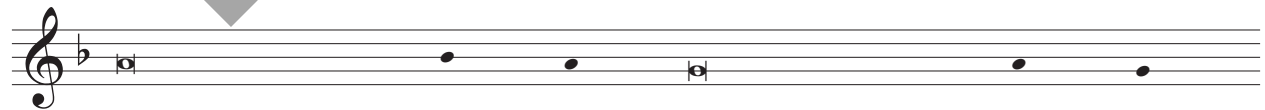
$\text{♩} = \text{ca. } 85$  ALL:

*mf*



Musical notation for the third All part, featuring a treble clef, a key signature of one flat, and a 4/4 time signature. The notation includes a tempo marking of ca. 85 and a dynamic marking of mf. It consists of a melodic line with eighth and quarter notes, followed by a chordal accompaniment.

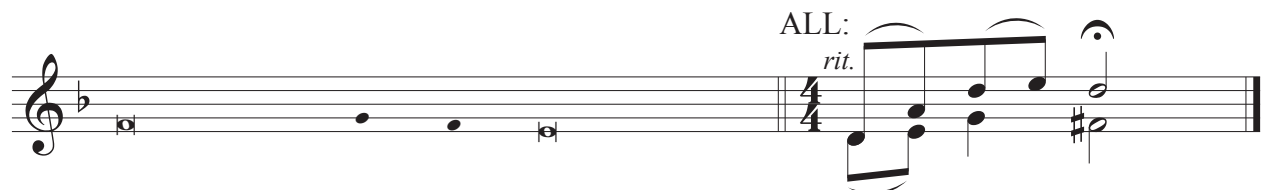
PRIEST:



Musical notation for the first Priest part, featuring a treble clef, a key signature of one flat, and a 4/4 time signature. The notation includes a whole rest followed by a dotted half note and a whole note.

ALL:

*rit.*



Musical notation for the fourth All part, featuring a treble clef, a key signature of one flat, and a 4/4 time signature. The notation includes a dynamic marking of rit. and a melodic line with eighth and quarter notes, followed by a chordal accompaniment.

Music: Stanley Rother Mass/Misa Stanley Rother; Robert Noble, b. 1980, © 2018, 2021, Robert Noble.

Published by OCP. All rights reserved.

# Stanley Rother Mass/Misa Stanley Rother

## Glory to God/Gloria a Dios

Trumpet I & II in B-flat

$\text{♩} = \text{ca. } 56$

Measures 1-60 of the musical score for Trumpet I & II in B-flat. The score is in 3/8 time and B-flat major. It features various dynamics (f, mf, ff), articulation (>), and performance instructions (Opt. Repeat, rit.). A large 'PREVIEW' watermark is overlaid on the score.

Music: Stanley Rother Mass/Misa Stanley Rother; Robert Noble, b. 1980, © 2018, 2021, Robert Noble.

Published by OCP. All rights reserved.

Edition #30151094

# Stanley Rother Mass/Misa Stanley Rother

## Alleluia/Aleluya

Trumpet I & II in B-flat

$\text{♩} = \text{ca. } 100$       RESPONSE:

*f*

*2*

VERSE: *freely* *a tempo* *f*

RESPONSE: *ff*

Music: Stanley Rother Mass/Misa Stanley Rother; Robert Noble, b. 1980, © 2018, 2021, Robert Noble.  
Published by OCP. All rights reserved.

# Stanley Rother Mass/Misa Stanley Rother

*Praise to You, Lord Jesus Christ/*

*Alabanza a Ti, Oh Cristo*

Trumpet I & II in B-flat

♩ = ca. 95

RESPONSE: 1x: *tacet*  
2x: *play*

*f*

VERSE:

*a tempo*

RESPONSE:

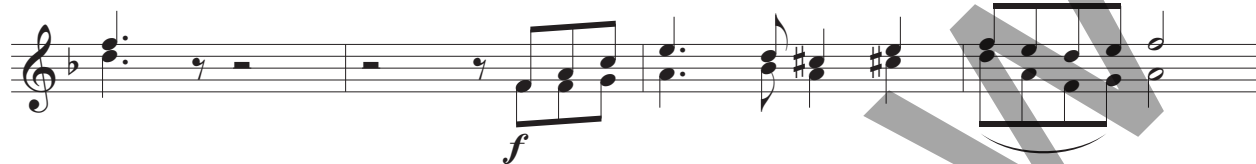
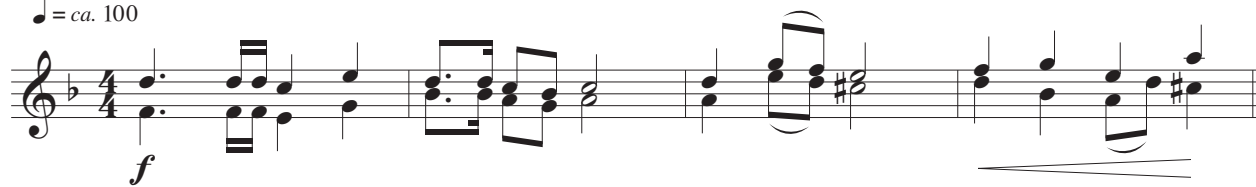
Music: *Stanley Rother Mass/Misa Stanley Rother*; Robert Noble, b. 1980, © 2018, 2021, Robert Noble.  
Published by OCP. All rights reserved.

# Stanley Rother Mass/Misa Stanley Rother

## *Holy/Santo*

Trumpet I & II in B-flat

♩ = ca. 100



Music: *Stanley Rother Mass/Misa Stanley Rother*; Robert Noble, b. 1980, © 2018, 2021, Robert Noble.  
Published by OCP. All rights reserved.

# Stanley Rother Mass/Misa Stanley Rother

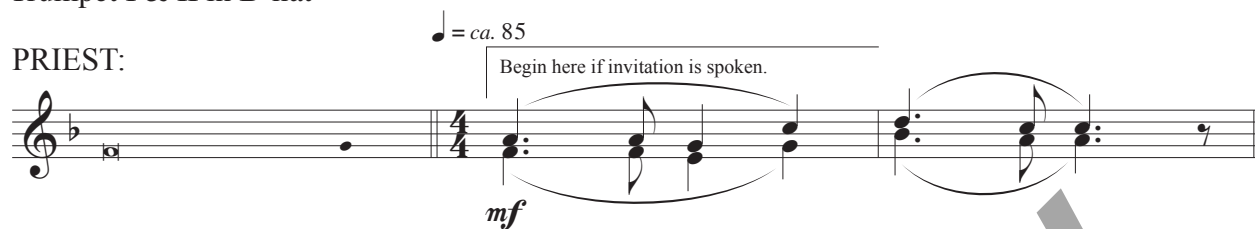
## *We Proclaim Your Death/Anunciamos Tu Muerte*

Trumpet I & II in B-flat

PRIEST:

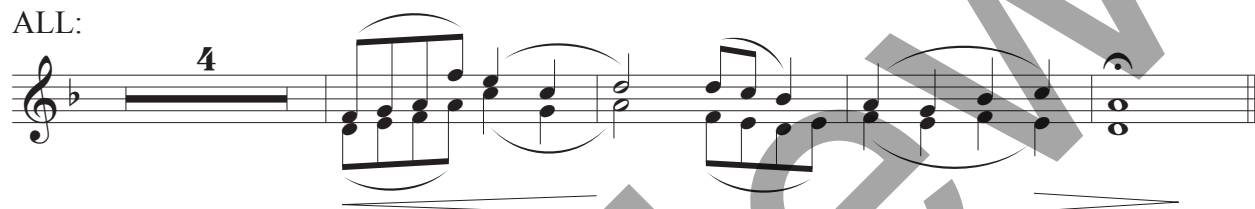
$\text{♩} = \text{ca. } 85$

Begin here if invitation is spoken.



*mf*

ALL:



*mf*

Music: *Stanley Rother Mass/Misa Stanley Rother*; Robert Noble, b. 1980, © 2018, 2021, Robert Noble.  
Published by OCP. All rights reserved.

# Stanley Rother Mass/Misa Stanley Rother

## *When We Eat This Bread/Cada Vez que Comemos de Este Pan*

Trumpet I & II in B-flat

PRIEST:

$\text{♩} = \text{ca. } 85$


Begin here if invitation is spoken.



*mf*

The musical notation for the Priest part is written on a single staff in 4/4 time. It begins with a whole rest, followed by a measure with a 4 over it. The music consists of several measures of chords and eighth notes, with a dynamic marking of *mf*. A bracket above the staff indicates the start of the phrase 'Begin here if invitation is spoken.' The tempo is marked as  $\text{♩} = \text{ca. } 85$ .

ALL:



The musical notation for the All part is written on a single staff in 4/4 time. It begins with a 4 over the staff, followed by several measures of chords and eighth notes. The music is marked with a dynamic marking of *mf*.

Music: *Stanley Rother Mass/Misa Stanley Rother*; Robert Noble, b. 1980, © 2018, 2021, Robert Noble.  
Published by OCP. All rights reserved.

# Stanley Rother Mass/Misa Stanley Rother

## *Save Us, Savior/Salvador del Mundo*

Trumpet I & II in B-flat

PRIEST:

$\text{♩} = \text{ca. } 85$

Begin here if invitation is spoken.

*mf*

ALL:

4

Music: *Stanley Rother Mass/Misa Stanley Rother*; Robert Noble, b. 1980, © 2018, 2021, Robert Noble.  
Published by OCP. All rights reserved.



# Stanley Rother Mass/Misa Stanley Rother

## *Doxology and Amen/Doxología y Amén*

Trumpet I & II in B-flat

PRIEST:

*freely*



$\text{♩} = \text{ca. } 100$

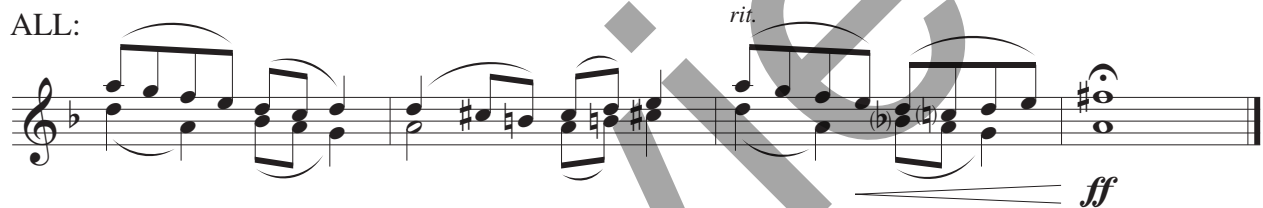
When Doxology is sung

When Doxology is not sung



ALL:

*rit.*



Music: *Stanley Rother Mass/Misa Stanley Rother*; Robert Noble, b. 1980, © 2018, 2021, Robert Noble.  
Published by OCP. All rights reserved.

# Stanley Rother Mass/Misa Stanley Rother

## *Lamb of God/Cordero de Dios*

Trumpet I & II in B-flat

$\text{♩} = \text{ca. } 85$

*mf*

1, 2.

3.

*rit.*

Music: *Stanley Rother Mass/Misa Stanley Rother*; Robert Noble, b. 1980, © 2018, 2021, Robert Noble.  
Published by OCP. All rights reserved.