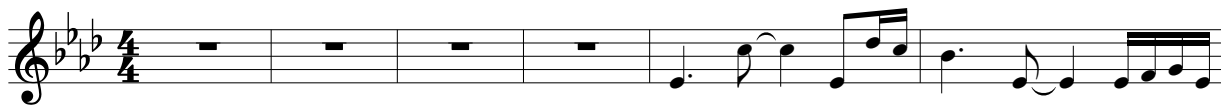


Sweet Redeemer

Steve Angrisano and Sarah Hart

INTRO (♩ = ca. 94)

Capo 1: (G) (D) (Em) (C) (G) (D/F#)
 Ab Eb Fm Db Ab Eb/G



VERSES

(Em) (C) (G) (G/B)
 Fm Db Ab Ab/C



1. King of Kings, bless-ed Je - sus, hand of mer-
 (2. I was) lost and you found me; in the dark-

(C) (C/D) (D) (G)
 Db Db/Eb Eb Ab



1. - cy, giv - er of grace; I have come to sing glo -
 2. - ness, you were my light. When I fell down, you for - gave

(G/B) (C) (C/D) (D)
 Ab/C Db Db/Eb Eb



1. - ry, to lay my heart be - fore you in this place.
 2. me, lift-ed me up and held me to your side.

REFRAIN

(G) (D/F#) (Em7)
 Ab Eb/G Fm7



Sweet re-deem - er, I sur - ren - der all I am to



Harmony

© 2001, Universal Music Group-Brentwood Benson Music Publishing, Inc. and Steve Angrisano. All rights reserved.
 Used with permission of CapitolCMGPublishing.com and Spirit & Song®, a division of OCP.

(C) Db (G) Ab (D/F#) Eb/G

— you. — Sweet re-deem - er, — I sur-ren - der —

(Em7) Fm7

1 (C) Db 2 (C) Db 3 (C) Db *D.S. al fine*

all I am to — you. — 2. I was — you. — From the you. —

to Bridge

Final

(C) Db (D/C) Eb/Db (C) Db (D/C) Eb/Db (C) Db (let ring) *Fine*

— you. —

BRIDGE

(Am) Bbm (Em) Fm (D) Eb

shad-ows of — the tomb — you called — me, — you rolled — a - way — the stone. —

(C) Db (Am) Bbm (Em) Fm

From the bur-den of — my sin — you saved — me, — you made —

(D) Eb (C) Db *D.S.*

— my heart — your home. —