



OCP MASS SETTINGS / MISAS CANTADAS DE OCP

MISA DEL PUEBLO INMIGRANTE/ MASS OF THE IMMIGRANTS

(REVISED WITH THE NEW *MISAL ROMANO* TEXT)

BOB HURD

PIANO

Misa del Pueblo Inmigrante/Mass of the Immigrants – Piano/Vocal Edition

Bob Hurd

© 2018, OCP

5536 NE Hassalo, Portland, OR 97213

(503) 281-1191 liturgy@ocp.org ocp.org

Excerpts from the English translation of *The Roman Missal* © 2010, International Commission on English in the Liturgy Corporation (ICEL), 1100 Connecticut Ave. NW, Suite 710, Washington, DC 20036-4101. All rights reserved. Used with permission. The English Gospel Acclamation verse and Lenten response from the *Lectionary for Mass* © 1969, 1981, 1997, ICEL. All rights reserved. Used with permission.

Spanish text from *Misal Romano, tercera edición* © 2014, United States Conference of Catholic Bishops—Conferencia Episcopal Mexicana, 3211 Fourth Street NE, Washington, DC 20017-1194; usccb.org. All rights reserved. Used with permission.

Spanish Gospel Acclamation verse and Lenten response © 1970, Conferencia Episcopal Española, Añastro, 1, 28033 Madrid, España. All rights reserved. Used with permission.

Published with the approval of the Committee on Divine Worship, United States Conference of Catholic Bishops.

None of the pages in this book may be reproduced in any way without written permission from the publisher.

Table of Contents

Letanía de Alabanza/Kyrie Litany of Praise	3
Gloria/Glory to God	6
Aleluya o Versículo antes del Evangelio/Gospel Acclamation.....	16
Eucharistic Acclamations	
Santo/Holy	20
Anunciamos Tu Muerte/We Proclaim Your Death	22
Cada Vez que Comemos/When We Eat This Bread.....	24
Salvador del Mundo/Save Us, Savior	26
Doxología y Amén/Doxology and Amen.....	28
Cordero de Dios/Lamb of God.....	30

The following parts for flute are available online;
visit ocp.org:

Santo/Holy	ed. 30102684
Anunciamos Tu Muerte/ We Proclaim Your Death	ed. 30102685
Cada Vez que Comemos/ When We Eat This Bread	ed. 30102686
Doxología y Amén/ Doxology and Amen	ed. 30102871

Additional revised Mass parts available online;
visit ocp.org:

Acto Penitencial con Invocaciones/ Penitential Act with Invocations	ed. 30142798
Introducción al Prefacio/ Preface Dialogue	ed. 30102763
Padre nuestro/The Lord's Prayer	ed. 30142682

Note: Water of Life/Agua de Vida (ed. 10295) may
continue to be used for the Sprinkling Rite.

Misa del Pueblo Inmigrante/Mass of the Immigrants

Piano/Choral Edition.....	ed. 30141957
Piano/Vocal Edition	ed. 30141956
Guitar/Choral Edition.....	ed. 30142684
Guitar/Vocal Edition	ed. 30141958
Choral-only Edition	ed. 30141959
Digital Playlist	ed. 30141955

For reprintable Assembly Editions, please visit OneLicense.net.

LETANÍA DE ALABANZA/KYRIE LITANY OF PRAISE

ESTROFAS (♩ = ca. 69)

Mi m
Em

Do7M
Cmaj7

Re
D

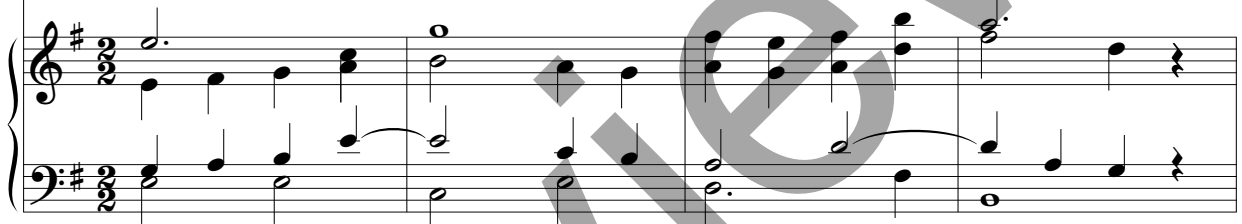
Si m7
Bm7

Cantor



Adviento	1. Te	a - la - ba - mos,	Se - ñor,	Au - ro - ra	ce - les -
y	2. Te	a - la - ba - mos,	Se - ñor,	Al - fa	y O -
Navidad	3. Te	a - la - ba - mos,	Se - ñor,	O ven,	Em - ma -
	1. Te	a - la - ba - mos,	Se - ñor,	tú nos	das a - gua
Cuaresma	2. Te	a - la - ba - mos,	Se - ñor,	tú nos	a - bres los
	3. Te	a - la - ba - mos,	Se - ñor,	tú nos	das vi - da e -
Cuaresma	1. Te	a - la - ba - mos,	Se - ñor,	tú que	bo - rras nues - tras
y	2. Te	a - la - ba - mos,	Se - ñor,	Cor - de	ro Pas -
Pascua	3. Te	a - la - ba - mos,	Se - ñor,	Sal - va - dor	del
Tiempo	1. ♯	Tú que	e - res el	ca - mi - no	que con - du - ce al
Ordinario	2. ♯	Tú que	e - res la	ver - dad	que i - lu - mi - na los
	3. ♯	Tú que	e - res la	vi - da	que re - nue - va el

Piano



Do7M
Cmaj7

La m7
Am7

Si7
B7

al Estribillo



1. tial:	Se - ñor,	ten	pie - dad.
2. me - ga:	Cris - to,	ten	pie - dad.
3. nuel:	Se - ñor,	ten	pie - dad.
1. vi - va:	Se - ñor,	ten	pie - dad.
2. o - jos:	Cris - to,	ten	pie - dad.
3. ter - na:	Se - ñor,	ten	pie - dad.
1. fal - tas:	Se - ñor,	ten	pie - dad.
2. cual:	Cris - to,	ten	pie - dad.
3. mun - do:	Se - ñor,	ten	pie - dad.
1. Pa - dre:	Se - ñor,	ten	pie - dad.
2. pue - blos:	Cris - to,	ten	pie - dad.
3. mun - do:	Se - ñor,	ten	pie - dad.

al Estribillo



Text: Verses, Jaime Cortez, b. 1963, Ana Victoria Demezas, b. 1958, and Bob Hurd, b. 1950, © 1994, 2010, Bob Hurd. Published by OCP. All rights reserved.
 Music: *Misa del Pueblo Inmigrante*; Bob Hurd; piano acc. by Dominic MacAller, b. 1959; desc. by Craig Kingsbury, b. 1952, © 1994, 1995, 2010, Bob Hurd.
 Published by OCP. All rights reserved.

Nota: Las estrofas en inglés se encuentran después del Estribillo.
Note: English verses may be found after the Refrain.

ESTRIBILLO/REFRAIN: Todos/All

Contrapunto/Descant

1, 3. Se - ñor, — ten pie - dad. *Lord, have — mer - cy,*
 2. † Cris - to, ten pie - dad. *Christ, have — mer - cy,*

Mi m Do7M Re Si m7 Do7M
 Em Cmaj7 D Bm7 Cmaj7

Melodía/Melody

1, 3. Ký - ri - e, Ký - ri - e, Ký - ri -
 2. Chri - ste, Chri - ste, Chri -

1, 2 a las Estrofas/to Verses Final *Fin/Fine*

1, 3. have mer - cy. cy. cy.
 2. have mer - cy. cy. cy.

Lam7 1, 2 Si7 Final
 Am7 B7 B7 *Fin/Fine*

a las Estrofas/to Verses *Fin/Fine*

1, 3. e, e - lé - i - son. lé - i - son.
 2. ste, e - lé - i - son.

1, 2 a las Estrofas/to Verses Final *Fin/Fine*

rit.

VERSES (♩ = ca. 69)

Mi m
Em

Do7M
Cmaj7

Re
D

Si m7
Bm7

Cantor

Advent	1. We	praise	you,	O	Lord,		Dawn	from	on
and	2. We	praise	you,	O	Lord,		Al - pha	and	O -
Christmas	3. We	praise	you,	O	Lord,		Em - man	-	u -
	1. We	praise	you,	O	Lord,		you	give	us
Lent	2. We	praise	you,	O	Lord,		you	o -	pen
	3. We	praise	you,	O	Lord,		you	give	us
Lent	1. We	praise	you,	O	Lord,		you	take	a -
and	2. We	praise	you,	O	Lord,		our	Pas -	chal
Easter	3. We	praise	you,	O	Lord,		Sav -	ior	of
	1. O	Lord,	you	are	the	way	that	leads	to
Ordinary	2. O	Lord,	you	are	the	truth	il -	lu -	min -
Time	3. O	Lord,	you	are	the	life	that	re -	news

Do7M
Cmaj7

La m7
Am7

Si7
B7

to Refrain

1. high:	Lord,	have	mer	-	cy.
2. me - ga:	Christ,	have	mer	-	cy.
3. el:	Lord,	have	mer	-	cy.
1. wa - ter:	Lord,	have	mer	-	cy.
2. eyes:	Christ,	have	mer	-	cy.
3. ter - nal:	Lord,	have	mer	-	cy.
1. sins:	Lord,	have	mer	-	cy.
2. Lamb:	Christ,	have	mer	-	cy.
3. world:	Lord,	have	mer	-	cy.
1. Fa - ther:	Lord,	have	mer	-	cy.
2. peo - ples:	Christ,	have	mer	-	cy.
3. world:	Lord,	have	mer	-	cy.

GLORIA/GLORY TO GOD

***ESTRIBILLO/REFRAIN** (♩. = ca. 92)

Mi m Si 7 Mi m
Em B7 Em

Glo - ria a Dios en el cie - lo, — y en la tie - rra paz a los
Glo - ry to God in the high - est, — glo - ry to God, and on

Piano

Sol Re Do Do/Si Lam Si 7 Si 7 Mi m
G D C C/B Am B7 B7 Em

1 2
hom - bres que a - ma el Se - ñor. a - ma el Se - ñor.
earth peace to peo - ple of good will. peo - ple of good will.

**a las Estrofas/to Verses

Final Si 7 Do Si 7 Mi m Lam Mi m Si 7 Mi m
B7 C B7 Em Am Em B7 Em *Fin/Fine*

a - ma el Se - ñor.
peo - ple of good will.

Final *Fin/Fine*

Text: Spanish, *Misa Romano, tercera edición* © 2014, US Conference of Catholic Bishops – Conferencia Episcopal Mexicana. All rights reserved. Used with permission.
English © 2010, ICEL. All rights reserved. Used with permission.

Music: *Misa del Pueblo Inmigrante*; Bob Hurd, b. 1950; piano acc. by Gregorio Reyes, b. 1952, © 1999, 2009, Bob Hurd. Published by OCP. All rights reserved.

*Cuando cante en un solo idioma, vaya directamente a la segunda casilla y continúe con las estrofas.
When singing the refrain in one language only, take 2nd ending going directly to verses.

**Las estrofas en inglés empiezan en la página 6 de este canto.
English verses begin on page 6 of this song.

ESTROFA 1

Mi m Em Re D Re7 D7 Sol G

1. Por tu in-men - sa glo - ria te a - la - ba - mos, — te ben - de -

Si7 B7 Mi m Em Si7 B7

1. ci - mos, — te a - do - ra - mos, — te glo - ri - fi - ca - mos, —

Do C Re D Sol G

1. te da - mos gra - cias, — Se - ñor Dios, Rey — ce - les - tial,

Mi m Em La m Am Si7 B7

1. Dios Pa - dre — to - do - po - de - ro - so. — *al* %

ESTROFA 2

Mi m Re Re7 Sol Si7
Em D D7 G B7

2. Se - ñor, Hi - jo ú - ni - co, Je - su - cris - to, _____ Se - ñor Dios, _____ Cor -

Mi m Si7
Em B7

2. de - ro de Dios, Hi - jo del Pa - dre, _____ tú que

Do La/Do# Re Si7 Mi m Do
C A/C# D B7 Em C

2. qui - tas el pe - ca - do del mun - do, _____ ten pie - dad de no - so - tros; _____

Si Mi m Do Si Do La/Do#
B Em C B C A/C#

2. tú que qui - tas el pe - ca - do del

Re D Si7 B7 Mi m Em Do C Si B Mi m Em Do C

2. mun - do, ___ a - tien - de nues - tra sú - pli-ca;

Si B Do C Re D Sol G Misus4 Esus4 Mi m Em

2. tú que es - tás ___ sen - ta - do a la de - re - cha del Pa - dre, ___

Lam Am Si7 B7

2. ten pie - dad ___ de no - so - tros. ___ *al %*

ESTROFA 3

Mi m Re Re7 Sol Si7
Em D D7 G B7

3. Por-que só - lo tú e - res San - to, — só - lo tú Se - ñor,

Mi m Si7
Em B7

3. só - lo tú Al - tí - si - mo, — Je - su - cris - to, — con el Es -

Do Re Sol Mi m
C D G Em

3. pí - ri - tu San - to en la glo - ria — de Dios Pa - dre. —

Lam Si7
Am B7

3. A - mén. — A - mén. *al § y fin*

VERSE 1

Mi m Re Re7 Sol
Em D D7 G

1. We praise you, we bless you, we a - dore you, _____ we

Si7 Misus4 Mi m Si7
B7 Esus4 Em B7

1. glo - ri - fy you, _____ we give you thanks for your great glo - ry, _____

Do Re Sol Mi m
C D G Em

1. _____ Lord God, heav - en - ly King, _____ O

Lam Si7
Am B7

1. God, al - might - y Fa - ther. _____

D.C. D.C.

VERSE 2

Mim Em Re D Re7 D7 Re#dis7 D#°7 Mim Em Re D

2. Lord Je - sus Christ, On-ly Be - got - ten Son, Lord God, Lamb of

Lam Am Mim Em Do C La/Do# A/C#

2. God, Son of the Fa - ther, you take a - way the sins of the

Re D Si7 B7 Mim Em Do C Si B Mim Em Do C Si B

2. world, — have mer - cy on us; you

Do C La/Do# A/C# Re D Si7 B7 Mim Em Do C

2. take a - way the sins of the world, — re - ceive — our prayer;

Si B Mi m Em Do C Si B Do C Re D

2. you are seat - ed at the right hand of the

Sol G Mi m Em Lam Am Si 7 B7 D.C.

2. Fa-ther, have mer-cy on us.

VERSE 3

Mi m Em Re D Re 7 D7 Sol G Re D

3. For you a lone are the Ho - ly One, you a -

Re#dis7 D#°7 Mi m Em Do C La/Do# A/C# Re D

3. lone are the Lord, you a-lone are the Most High, Je - sus

GLORIA/GLORY TO GOD, cont. (9)

Si7 B7 Mi m Do Si Do Re

Em C B C D

3. *Christ, with the Ho - ly Spir - it, _____ in the glo - ry of God _____ the _____*

Sol G Mi m Lam Si7 B7

G Em Am B7

3. *Fa - ther. _____ A - men. _____ A - men.* *D.C. al fine*

D.C. al fine

***ESTRIBILLO/REFRAIN** (♩. = ca. 92)

Mi m Em Si 7 B7 Mi m Em

Glo - ria a Dios en el cie - lo, — y en la tie - rra paz a los
Glo - ry to God in the high - est, — glo - ry to God, and on

Piano

Sol G 1 Re D Do C Do/Si C/B Lam Am Si 7 B7 2 Si 7 B7 Mi m Em

hom - bres que a - ma el Se - ñor. a - ma el Se - ñor.
earth peace to peo - ple of good will. peo - ple of good will.

1 2 **a las Estrofas/to Verses

Final Si 7 B7 Do C Si 7 B7 Mi m Em Lam Am Mi m Em Si 7 B7 Mi m Em **Fin/Fine**

a - ma el Se - ñor.
peo - ple of good will.

Final **Fin/Fine**

*El Estribillo se reimprime aquí para su comodidad.
 The Refrain is reprinted here for your convenience.

ALELUYA O VERSÍCULO ANTES DEL EVANGELIO/ GOSPEL ACCLAMATION

♩ RESPUESTA/RESPONSE: (♩. = ca. 92) 1ª vez: Cantor, Todos repiten; después: Todos/
1st time: Cantor, All repeat; thereafter: All

Chorus: Fa#m F#m Re D Fa#m F#m Mi E

A - le - lu - ya, a - le - lu -
Cuaresma Glo - ria a ti, Se - ñor, Hi - jo de Dios
Lent Praise and hon - or to you, Lord Je - sus

ya. A - le - lu - ya,
vi - vo. Glo - ria a ti, Se - ñor,
Christ! Praise and hon - or to you,

1 Fa#m F#m 2 Fa#m F#m a la Estrofa/
to Verse

a - le lu - ya. ya.
Hi - jo de Dios vi - vo. vi - vo.
Lord Je - sus Christ! Christ!

1 2 a la Estrofa/
to Verse

Piano

Text: Spanish Gospel Acclamation verse and Lenten response © 1970, Conferencia Episcopal Española. All rights reserved. Used with permission.

English Gospel Acclamation verse and Lenten response © 1969, 1981, 1997, ICEL. All rights reserved. Used with permission.

Music: *Misa del Pueblo Inmigrante*; Bob Hurd, b. 1950; piano acc. by Dominic MacAller, b. 1959, © 1994, 2018, Bob Hurd. Published by OCP. All rights reserved.

Final
 Fa#m
 F#m

Fin/Fine

ya. _____
 vi - vo. _____
 Christ! _____

ESTROFA: Cantor

La Do#7 Fa#m Re
 A C#7 F#m D

Yo soy la Luz del mun - do, di - ce el Se - ñor; el que me

Si m Do#7
 Bm C#7

si - gue ten - drá la luz de la vi - da. _____

al % y fin

al % y fin

VERSE: Cantor

La A Do#7 C#7 Fa#m F#m Re D

I am the light of the world, says the Lord; who - ev - er

Si m Bm Do#7 C#7 D.C. al fine

fol - lows me will have the light of life.

*ESTROFA OPCIONAL/ALTERNATE VERSE: Cantor

Fa#m F#m Re D Si m Bm

Yo soy la Luz del mundo, dice el Se - ñor; el que me sigue tendrá la luz de la
I am the light of the world, says the Lord; whoever follows me will have the light of

Do#7 C#7 al § y fin/D.C. al fine

vi - da. life.

*Se pueden cantar otros versículos del Leccionario con esta misma melodía.
Other Lectionary verses can be sung with this melody.

Preview

SANTO/HOLY

(♩ = ca. 88)

Mi m Em Si 7 B7 Mi m Em

Biling. San - to, San - to, San - to, San - to es el Se - ñor,
Español San - to, San - to, San - to, San - to es el Se - ñor,
English Ho - ly, Ho - ly, Ho - ly Lord God of hosts.

Piano

Sol G Re D Si 7 B7 Do C

Dios del u - ni - ver - so. Heav - en and earth are
 Dios del u - ni - ver - so. Lle - nos es - tán el cie - lo y la
 Heav - en and earth, heav - en and earth are

Mi m Em Si 7 B7 Sol G

full of your glo - ry. Ho - san -
 tie - rra de tu glo - ria. Ho - san -
 full of your glo - ry. Ho - san -

Text: Spanish, *Misal Romano, tercera edición* © 2014, US Conference of Catholic Bishops – Conferencia Episcopal Mexicana. All rights reserved. Used with permission.
 English © 2010, ICEL. All rights reserved. Used with permission.

Music: *Misa del Pueblo Inmigrante*; Bob Hurd, b. 1950; piano acc. by Dominic MacAller, b. 1959, © 1994, 2009, Bob Hurd. Published by OCP. All rights reserved.

Re D Lam Am Mi m Em Sol G Re D

na in the high - est. Ho - san - na en el
na en el cie - lo. Ho - san - na en el
na in the high - est. Ho - san - na in the

Si7 B7 1 Mi m Em Mi m Em Si7 B7

cie - lo. Ben - di - to el que vie - ne en
cie - lo. Ben - di - to el que vie - ne en
high - est. Bless'd is he who comes in the

Mi m Em

nom - bre del Se - ñor. Ho - lo.
nom - bre del Se - ñor. Ho - lo.
name of the Lord. Ho - est.

Final

ANUNCIAMOS TU MUERTE/WE PROCLAIM YOUR DEATH

Mi m Em Sacerdote/Priest Si 7 B7 Mi m Em (♩. = ca. 84)

Éste es el Misterio de la fe.
O bien: Éste es el Sacramento de nues - tra fe.
The myster - y of faith.

Piano

Si 7 B7 Mi m Em Todos/All Mi m Em

A - nun - cia - mos tu
 We pro - claim your Death, O

Si 7 B7 Mi m Em Re D

muer - te, pro - cla - ma - mos tu re - su - rec -
Lord, and pro - fess your Res - ur - rec -

Text: Spanish, *Misal Romano, tercera edición* © 2014, US Conference of Catholic Bishops – Conferencia Episcopal Mexicana. All rights reserved. Used with permission.
 English © 2010, ICEL. All rights reserved. Used with permission.

Music: *Misa del Pueblo Inmigrante*; Bob Hurd, b. 1950; © 1994, 2009, Bob Hurd. Published by OCP. All rights reserved.

Sol	Mi7	Lam	Re	Sol	Mi7	Lam	Si7
G	E7	Am	D	G	E7	Am	B7

ción. _____ 7 ¡Ven, Se - ñor Je - sús! _____ 7 ¡Ven, Se - ñor Je -
 tion _____ un - til you come a - gain, _____ un - til you come a -

1			Final
Do	Si7	Do	Si7
C	B7	C	B7
			Mi m
			Em

sús! _____ sú s!
 gain. _____ gain.

1 **Final**

CADA VEZ QUE COMEMOS/WHEN WE EAT THIS BREAD

Mi m Em Sacerdote/Priest (♩ = ca. 92)

Mi m Em Si 7 B7

Éste es el Misterio de la fe. Cristo nos re - di - mió.
 (-----) The myster - y of faith.

Piano

Mi m Em Lam Am Re D Todos/All Mi m Em

Ca - da vez que co - me - mos
 When we eat this Bread and

Lam Am Re D Mi m Em Lam Am Re sus4 Re
 Am Dsus4 D

de es - te pan y be - be - mos de es - te cá - liz, a - nun -
 drink this Cup, we pro - claim your Death, O Lord, un -

Text: Spanish, *Misal Romano, tercera edición* © 2014, US Conference of Catholic Bishops – Conferencia Episcopal Mexicana. All rights reserved. Used with permission.
 English © 2010, ICEL. All rights reserved. Used with permission.
 Music: *Misa del Pueblo Inmigrante*; Bob Hurd, b. 1950; piano acc. by Dominic MacAller, b. 1959, © 1994, 2009, Bob Hurd. Published by OCP. All rights reserved.

Sol G La m Am Re D Sol G La m Am

cia - mos tu muer - te, Se - ñor, un - til you come a - gain, has - ta que vuel - til you come a -

1 Re sus4 Dsus4	Re D	Re sus2,4 Dsus2,4	Re D	Final Re sus4 Dsus4	Re D
-----------------------	---------	----------------------	---------	---------------------------	---------

vas. gain. vas. gain.

SALVADOR DEL MUNDO/SAVE US, SAVIOR

Si m Bm Fa#7 Si m Sol
 Bm F#7 F#7 Bm G

Sacerdote/Priest (♩ = ca. 96)

Éste es el Misterio de la fe. Cristo se entregó por no-sotros.
 (-----) *The myster - y of faith.*

Piano

Fa#7 Si m Sol Do#7 Fa#7
 F#7 Bm G C#7 F#7

Todos/All

Sal - va - dor del mun - do, sál - va - nos, y Sal - va -
 Save us, Sav - ior of the world, for by your

Si m Sol Do#7 Fa#7 Sol Fa#7
 Bm G C#7 F#7 G F#7

dor del mun - do, sál - va - nos, tú que nos has li - be -
 Cross and Res - ur - rec - tion you have set us

Text: Spanish, *Misal Romano, tercera edición* © 2014, US Conference of Catholic Bishops – Conferencia Episcopal Mexicana. All rights reserved. Used with permission.
 English © 2010, ICEL. All rights reserved. Used with permission.
 Music: *Misa del Pueblo Inmigrante*; Bob Hurd, b. 1950; piano acc. by Gregorio Reyes, b. 1952, © 2007, 2009, 2017, Bob Hurd. Published by OCP. All rights reserved.

Si m Sim/La Sol Sol/Fa# Mi m Fa# Bm Bm/A G G/F# Em F#	1	Final
ra - do por tu cruz y re - su - rrec - ción. ción. <i>free, — ‡ you have — set us — free. free.</i>	Si m Bm	Si m Bm

	1	Final

Preview

DOXOLOGÍA Y AMÉN/DOXOLOGY AND AMEN

Mi m Re
Em D
Sacerdote/Priest

Por Cristo, con él y en él, a ti, Dios Padre omnipotente, en la u - ni -
Through him, and with him, and in him, O God, almighty Father, in the

Piano

Do C Mi m La m Si7 Mi m
Em Am B7 Em

dad del Espíritu Santo, todo honor y toda glo - ria por los siglos de los si-glos.
unity of the Holy Spirit, all glory and honor is yours, for ever and ev - er.

(♩ = ca. 88)

Re/Fa# Sol Re La m Mi m
D/F# G D Am Em

Todos/All

A - mén, a - mén.
A - men, a - men.

mf

Text: Spanish doxology, *Misal Romano*, tercera edición © 2014, US Conference of Catholic Bishops – Conferencia Episcopal Mexicana. All rights reserved.
Used with permission. English doxology © 2010, ICEL. All rights reserved. Used with permission.
Music: *Misa del Pueblo Inmigrante*; Bob Hurd, b. 1950; piano acc. by Dominic MacAller, b. 1959, © 1994, 2009, Bob Hurd. Published by OCP. All rights reserved.

Sol G Re D Si7 B7 Do C Si7 B7 Mi m Em

A - mén, a - mén. _____
 A - men, a - men. _____

Re/Fa# D/F# Sol G Re D La m Am Mi m Em

_____ A - mén, a - mén. _____
 _____ A - men, a - men. _____

f *cresc.*

Sol G Re D Si7 B7 Do C Si7 B7 Mi m Em

A - mén, a - mén. _____
 A - men, a - men. _____

ff *cresc.*

CORDERO DE DIOS/LAMB OF GOD

(♩ = ca. 100)

Si m
Bm

Fa#7
F#7

Cor - de - ro de Dios, que qui - tas el pe - ca - do del
Lamb of God, you take a - way the sins of the

Piano

1, 2
Si m
Bm

Sol
G

Do#^o7
C#^o7

Fa#7
F#7

mun - do, ten pie - dad de no - so - tros, ten pie -
world, have mer - cy on us, have

1, 2

Sol
G

Do#^o7
C#^o7

Fa#7
F#7

Final
Si m
Bm

dad de no - so - tros. mun - do,
mer - cy on us. world,

Final

Music: *Misa del Pueblo Inmigrante*; Bob Hurd, b. 1950; piano acc. by Gregorio Reyes, b. 1952, © 2005, 2010, Bob Hurd. Published by OCP. All rights reserved.

Sol G Do#^ø7 C#^ø7 Fa#7 F#7 Sol G Do#^ø7 C#^ø7

da - nos la paz,
grant us peace,
da - nos la
grant us

Fa#7 F#7 Si m Bm Do#^ø7 C#^ø7 Fa#7sus4 F#7sus4 Fa#7 F#7 Si m Bm

paz,
peace,
da - nos la paz.
grant us peace.

Preview

