

# Psalm 96: *Today Is Born Our Savior*

(♩. = 60 - 63)

## CANTOR INTONES

Musical notation for the Cantor Intones, consisting of a single staff in 6/8 time. It begins with a half note G4, followed by a dotted half note G4-A4. After a double bar line, there is a whole rest for 7 measures, followed by a quarter note G4, a quarter note F4, and a quarter note E4.

## REFRAIN 1

Musical notation for Refrain 1, consisting of two staves in 6/8 time. The melody is on the upper staff, and the accompaniment is on the lower staff. The melody consists of quarter notes G4, A4, B4, C5, B4, A4, G4, followed by a quarter rest and a quarter note G4. The accompaniment consists of quarter notes G4, A4, B4, C5, B4, A4, G4, followed by a quarter rest and a quarter note G4.

## VERSE 1

Musical notation for Verse 1, consisting of a single staff in 6/8 time. It features a whole rest for 2 measures, a 9/8 time signature change, a whole rest for 2 measures, a 6/8 time signature change, a whole rest for 4 measures, and a quarter note G4, a quarter note F4, and a quarter note E4.

## REFRAIN 2

Musical notation for Refrain 2, consisting of two staves in 6/8 time. The melody is on the upper staff, and the accompaniment is on the lower staff. The melody consists of quarter notes G4, A4, B4, C5, B4, A4, G4, followed by a quarter rest and a quarter note G4. The accompaniment consists of quarter notes G4, A4, B4, C5, B4, A4, G4, followed by a quarter rest and a quarter note G4.

## VERSE 2

Musical notation for Verse 2, consisting of a single staff in 6/8 time. It features a whole rest for 2 measures, a 9/8 time signature change, a whole rest for 2 measures, a 6/8 time signature change, a whole rest for 4 measures, and a quarter note G4, a quarter note F4, and a quarter note E4.

## REFRAIN 3

Musical notation for Refrain 3, consisting of two staves in 6/8 time. The melody is on the upper staff, and the accompaniment is on the lower staff. The melody consists of quarter notes G4, A4, B4, C5, B4, A4, G4, followed by a quarter rest and a quarter note G4. The accompaniment consists of quarter notes G4, A4, B4, C5, B4, A4, G4, followed by a quarter rest and a quarter note G4.

A single musical staff in treble clef with a key signature of one flat. The staff contains a sequence of chords and notes, all enclosed within a long, horizontal slur that spans the entire width of the staff.

**VERSE 3**

The first line of music for Verse 3, consisting of two staves. The top staff has a treble clef and a key signature of one flat. The bottom staff has a bass clef and a key signature of one flat. The music features a series of chords and notes, with some notes beamed together.

The second line of music for Verse 3, consisting of two staves. The top staff has a treble clef and a key signature of one flat. The bottom staff has a bass clef and a key signature of one flat. The music continues with chords and notes, including some beamed eighth notes.

The third line of music for Verse 3, consisting of two staves. The top staff has a treble clef and a key signature of one flat. The bottom staff has a bass clef and a key signature of one flat. The music features a melodic line in the treble clef and a bass line in the bass clef, with some notes marked with accents.

**REFRAIN 4**

The first line of music for Refrain 4, consisting of two staves. The top staff has a treble clef and a key signature of one flat. The bottom staff has a bass clef and a key signature of one flat. The music features a series of chords and notes, with some notes beamed together.

The second line of music for Refrain 4, consisting of two staves. The top staff has a treble clef and a key signature of one flat. The bottom staff has a bass clef and a key signature of one flat. The music continues with chords and notes, all enclosed within a long, horizontal slur that spans the entire width of the staff.

**VERSE 4**

The first line of music for Verse 4, consisting of two staves. The top staff has a treble clef and a key signature of one flat. The bottom staff has a bass clef and a key signature of one flat. The music features a series of chords and notes, with some notes beamed together.

The second line of music for Verse 4, consisting of two staves. The top staff has a treble clef and a key signature of one flat. The bottom staff has a bass clef and a key signature of one flat. The music continues with chords and notes, including some beamed eighth notes.

**FINAL REFRAIN**

*rit.*

Preview

Handbells

# Psalm 96: *Today Is Born Our Savior*

(♩. = 60 - 63)

## CANTOR INTONES

Musical notation for the Cantor Intones, consisting of two staves. The first staff begins with a treble clef, a key signature of one flat (Bb), and a 6/8 time signature. It contains a series of chords and rests. A fermata with the number '7' above it covers a seven-measure rest in the second staff.

## REFRAIN 1

Musical notation for Refrain 1, consisting of two staves. The first staff begins with a treble clef, a key signature of one flat (Bb), and a 6/8 time signature. It contains a series of chords and rests. The second staff continues the chordal sequence.

## VERSE 1

Musical notation for Verse 1, consisting of two staves. The first staff begins with a treble clef, a key signature of one flat (Bb), and a 6/8 time signature. It contains a series of chords and rests. The second staff continues the chordal sequence, featuring a fermata with the number '3' above it.

## REFRAIN 2

Musical notation for Refrain 2, consisting of two staves. The first staff begins with a treble clef, a key signature of one flat (Bb), and a 6/8 time signature. It contains a series of chords and rests. The second staff continues the chordal sequence.

## VERSE 2

Musical notation for Verse 2, consisting of two staves. The first staff begins with a treble clef, a key signature of one flat (Bb), and a 6/8 time signature. It contains a series of chords and rests. The second staff continues the chordal sequence, featuring a fermata with the number '3' above it.

REFRAIN 3

Two staves of musical notation for Refrain 3. The first staff begins with a treble clef, a key signature of one flat (F major), and a common time signature. It contains a sequence of chords: G4, B4, D5, G4, B4, D5, G4, B4, D5. The second staff continues with chords: G4, B4, D5, G4, B4, D5, G4, B4, D5, G4.

VERSE 3

Two staves of musical notation for Verse 3. The first staff starts with a treble clef, a key signature of one flat, and a common time signature. It contains chords: G4, B4, D5, G4, B4, D5, G4, B4, D5, G4, B4, D5. The second staff contains a four-measure rest (marked with '4'), followed by chords: G4, B4, D5, G4, B4, D5, G4, B4, D5.

REFRAIN 4

One staff of musical notation for Refrain 4. It begins with a treble clef, a key signature of one flat, and a common time signature. The chords are: G4, B4, D5, G4, B4, D5, G4, B4, D5, G4, B4, D5, G4, B4, D5, G4, B4, D5.

VERSE 4

Two staves of musical notation for Verse 4. The first staff contains chords: G4, B4, D5, G4, B4, D5, G4, B4, D5, G4, B4, D5. The second staff contains a four-measure rest (marked with '4'), followed by chords: G4, B4, D5, G4, B4, D5, G4, B4, D5.

FINAL REFRAIN

Two staves of musical notation for Final Refrain. The first staff contains chords: G4, B4, D5, G4, B4, D5, G4, B4, D5, G4, B4, D5. The second staff contains chords: G4, B4, D5, G4, B4, D5, G4, B4, D5, G4, B4, D5, G4, B4, D5, G4. The piece concludes with the marking *rit.*

B<sup>b</sup> Trumpets I & II

# Psalm 96: *Today Is Born Our Savior*

(♩. = 60 - 63)

## CANTOR INTONES

Musical notation for the Cantor Intones, featuring a treble clef, a key signature of one sharp (F#), and a 6/8 time signature. The piece begins with a series of chords and a melodic line, followed by a rest and a final melodic phrase.

## REFRAIN 1

Musical notation for Refrain 1, consisting of two staves of music. The first staff begins with a first ending bracket labeled '1'. The melody is simple and melodic, with a key signature of one sharp and a 6/8 time signature.

## VERSE 1

Musical notation for Verse 1, consisting of a single staff of music. It features a series of chords with rests, labeled with the numbers 2, 2, and 4, indicating the number of measures. The piece ends with a melodic phrase. Key signature: one sharp, time signature: 6/8.

## REFRAIN 2

Musical notation for Refrain 2, consisting of two staves of music. The first staff begins with a melodic phrase, followed by a series of chords with rests. The second staff continues with more chords and rests. Key signature: one sharp, time signature: 6/8.

## VERSE 2

Musical notation for Verse 2, consisting of a single staff of music. It features a series of chords with rests, labeled with the numbers 2, 2, and 4. The piece ends with a melodic phrase. Key signature: one sharp, time signature: 6/8.

## REFRAIN 3

Musical notation for Refrain 3, consisting of two staves of music. The first staff begins with a melodic phrase, followed by a series of chords with rests. The second staff continues with more chords and rests. Key signature: one sharp, time signature: 6/8.

**VERSE 3**

**REFRAIN 4**

**VERSE 4**

**FINAL REFRAIN**

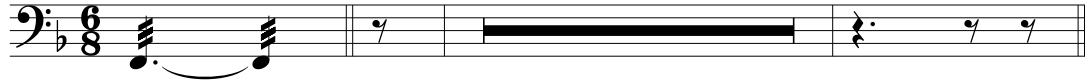
Timpani

Psalm 96: *Today Is Born Our Savior*

(♩. = 60 - 63)

CANTOR INTONES

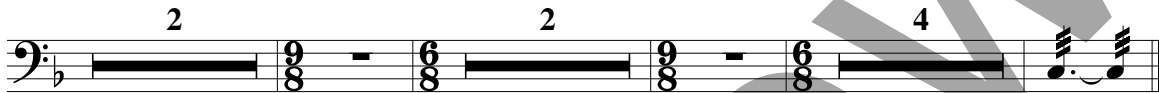
7



REFRAIN 1



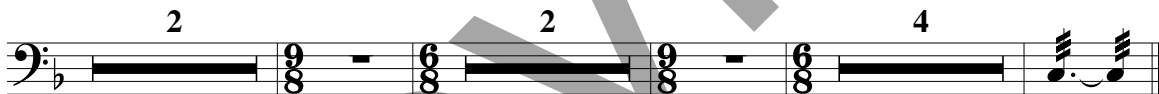
VERSE 1



REFRAIN 2



VERSE 2



REFRAIN 3



VERSE 3



REFRAIN 4



VERSE 4



FINAL REFRAIN



rit.