

# LAMB OF GOD

(♩ = ca. 78)

Capo 1: (D)  
Eb

(G/B)  
Ab/C

(G)  
Ab

(D/F#)  
Eb/G

(A)  
Bb

(Bm)  
Cm

(Em)  
Fm

(D/F#)  
Eb/G

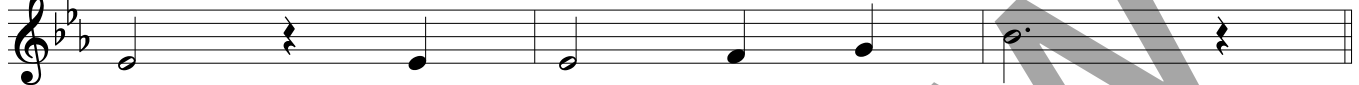


Lamb of God, you take a - way the sins of the

(Gsus2)  
Absus2

(D/F#)  
Eb/G

(G/B)  
Ab/C



world, have mer - cy on us.

(Em7)  
Fm7

(D/F#)  
Eb/G

(G)  
Ab

(A)  
Bb

(Bm)  
Cm

(Em)  
Fm

(D/F#)  
Eb/G



Lamb of God, you take a - way the sins of the

(Gsus2)  
Absus2

(D/F#)  
Eb/G

(G/B)  
Ab/C



world, have mer - cy on us.

(D)  
Eb

(G/B)  
Ab/C

(G)  
Ab

(D/F#)  
Eb/G

(A)  
Bb

(Bm)  
Cm

(Em)  
Fm

(D/F#)  
Eb/G



Lamb of God, you take a - way the sins of the

(Gsus2)  
Absus2

(D/F#)  
Eb/G

(F)  
Gb

(G)  
Ab

(D/A)  
Eb/Bb

(D)  
Eb



world, grant us \_\_\_\_\_ peace. \_\_\_\_\_

Music: *Mass of the Sacred Heart*; Timothy R. Smith, b. 1960, © 2007, 2010, Timothy R. Smith. Published by OCP. All rights reserved.