

Who's the Greatest?

Paule Freeburg, DC
and Christopher Walker

INTRO Joyfully (♩ = ca. 120)

Keyboard

The introductory keyboard music is written in 4/4 time with a tempo of approximately 120 beats per minute. It features a melody in the right hand and a bass line in the left hand. The music is marked *mf* (mezzo-forte). The key signature is one sharp (F#), and the time signature is 4/4. The piece begins with a C major chord and ends with a G major chord.

REFRAIN

Optional Descant *mf*

Melody *mf*

Who's the great - est? — Who's the

Who's the great - est? — Who's the

great - est? — Who's the great - est in the King - dom of God? —

great - est? — Who's the great - est in the King - dom of God? —

The refrain section includes vocal lines and keyboard accompaniment. The vocal lines are written in a single staff, with lyrics underneath. The keyboard accompaniment is written in two staves (treble and bass clef). The music is marked *mf* (mezzo-forte). The key signature is one sharp (F#), and the time signature is 4/4. The piece begins with a C major chord and ends with a G major chord. The lyrics are: "Who's the great - est? — Who's the great - est? — Who's the great - est in the King - dom of God? —".

1-3 *f* to Verses Final *f*
Who's the great - est in the King - dom of God? — Who's the great - est in the

1-3 *f* to Verses Final *f*
Who's the great - est in the King - dom of God? — Who's the great - est in the

1-3 *f* to Verses Final *f*
F C Dm7 G C F C
Who's the great - est in the King - dom of God? — Who's the great - est in the

King - dom of God? — Who's the great - est in the King - dom of God? — *Fine*

King - dom of God? — Who's the great - est in the King - dom of God? — *Fine*

Dm7 G C F C Dm7 G C *Fine*

VERSES

mp

1. Those who love Je - sus, _____ those who are true, _____
 2. Those who serve oth - ers _____ as Je - sus would do, _____
 3. Those who are pray - ing _____ as Je - sus did too, _____

mp

Dm7 G7 C C/E

D.S.

1-3. these are the peo - ple like me and like you. Who's the

F G D G G7 *D.S.*

Composer Notes

“Who’s the Greatest” comes from the children’s book *Many More Stories and Songs of Jesus* (30132494). It is sung with the story “The Greatest in the Kingdom of God” about the disciples asking Jesus who is the greatest disciple. Jesus tells them (and tells us, too) that if we want to be great, then we must serve others, just as he did.

The descant and instrument parts are optional and the keyboard accompaniment is suggested only—feel free to add octaves in the left hand.

Sing this song after you have read the story and asked the children to share different ways we can serve and care for each other today, at school and at home. Consider using it at other times when the liturgy or prayer focus is about honesty, caring for others, and sharing our God-given gifts.

—Paule Freeburg, DC and Christopher Walker

Who's the Greatest?

(Guitar/Vocal)

Paule Freeburg, DC
and Christopher Walker

INTRO Joyfully (♩ = ca. 120)

mf C G F C

(Kbd)

REFRAIN

Dm7 G C *mf* C G

Who's the great - est? _ Who's the great - est? _

C F G

Who's the great - est in the King - dom of God? _ Who's the

C Dm7 G C **Final** F C

to Verses *f*

great - est in the King - dom of God? _ Who's the great - est in the

Dm7 G C F C Dm7 G C *Fine*

King - dom of God? _ Who's the great - est in the King - dom of God? _

VERSES

Dm7 G7 C C/E *mp*

1. Those who love Je - sus, _ _ _ _ _ those who are true, _ _
2. Those who serve oth - ers _ _ _ _ _ as Je - sus would do, _ _
3. Those who are pray - ing _ _ _ _ _ as Je - sus did too, _ _

F G D G G7 *D.S.*

1-3. these are the peo - ple like me and like you. Who's the

Who's the Greatest?

SOLO INSTRUMENT I in C

Paule Freeburg, DC
and Christopher Walker

INTRO *Joyfully* (♩ = ca. 120)

mf

REFRAIN

1-3 *f* to Verses

Final *f* Fine

VERSES 1-3

mp D.S.

© 2015, Paule Freeburg, DC and Christopher Walker. Published by OCP, 5536 NE Hassalo, Portland, OR 97213. All rights reserved.

Who's the Greatest?

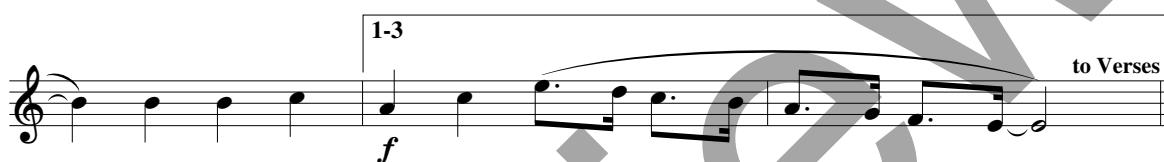
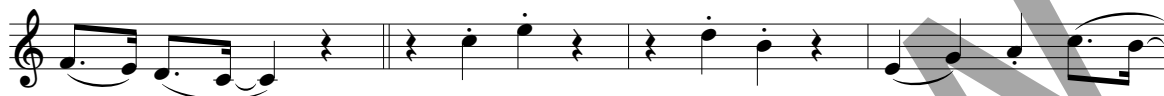
SOLO INSTRUMENT II in C

Paule Freeburg, DC
and Christopher Walker

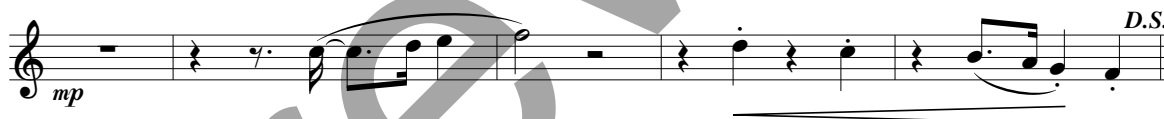
INTRO *Joyfully* (♩ = ca. 120)



§ REFRAIN



VERSES 1-3



© 2015, Paule Freeburg, DC and Christopher Walker. Published by OCP, 5536 NE Hassalo, Portland, OR 97213. All rights reserved.

Assembly Edition

WHO'S THE GREATEST?

Paule Freeburg, DC
and Christopher Walker

Refrain

Who's the great - est? Who's the great - est? Who's the great - est in the King - dom of God? Who's the great - est in the King - dom of God?

to Verses Last time

Verses

1. Those who love Je - sus, those who are true,
2. Those who serve oth - ers as Je - sus would do,
3. Those who are pray - ing as Je - sus did too,

to Refrain

1. these are the peo - ple like me and like you.
2. these are the peo - ple like me and like you.
3. these are the peo - ple like me and like you.

© 2015, Paule Freeburg, DC and Christopher Walker. Published by OCP, 5536 NE Hassalo, Portland, OR 97213.
All rights reserved.

For reprint permissions, please visit OneLicense.net or contact us at 1-800-663-1501.