

Celebremos Navidad

INSTRUMENTO en Do

Diego Correa y Damaris Thillet

Arr. de Máximo Torres

INTRO *Rumba Flamenca* (♩ = ca. 98)

Musical notation for the Intro section, Rumba Flamenca style. It consists of two staves of music in 3/2 time, featuring a melodic line with eighth and sixteenth notes and rests.

ESTRIBILLO

Musical notation for the Estribillo section. It consists of two staves of music. The first staff shows a melodic line with a repeat sign and a first ending bracket. The second staff continues the melody with a second ending bracket and a repeat sign, ending with the instruction "a las Estrofas (Fin)".

ESTROFAS 1-4

Musical notation for the Estrofas 1-4 section. It consists of two staves of music. The first staff shows a melodic line with a repeat sign and a first ending bracket. The second staff continues the melody with a second ending bracket and a repeat sign, ending with the instruction "al %".

© 2007, 2015, Diego Correa y Damaris Thillet. Obra publicada por OCP, 5536 NE Hassalo, Portland, OR 97213. Derechos reservados.

Utilice esta partitura con el acompañamiento de teclado y guitarra de la colección *El Señor Nos Invita, Vol. 2*, edición 30134136.

Celebremos Navidad

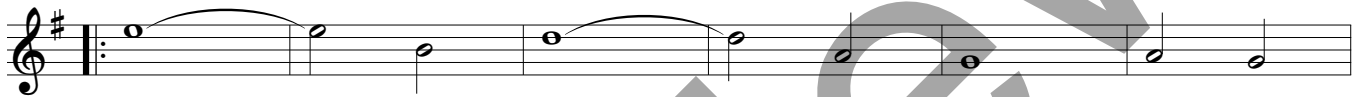
INSTRUMENTO en Sib

Diego Correa y Damaris Thillet
Arr. de Máximo Torres

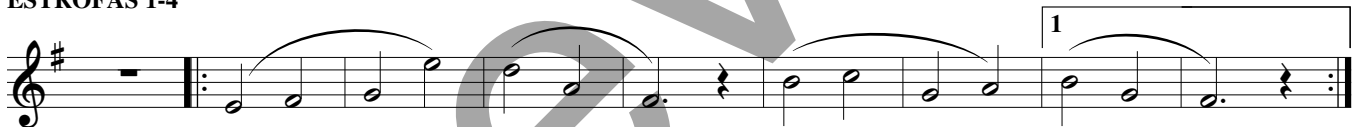
INTRO *Rumba Flamenca* (♩ = ca. 98)



ESTRIBILLO



ESTROFAS 1-4



© 2007, 2015, Diego Correa y Damaris Thillet. Obra publicada por OCP, 5536 NE Hassalo, Portland, OR 97213. Derechos reservados.

Utilice esta partitura con el acompañamiento de teclado y guitarra de la colección *El Señor Nos Invita, Vol. 2*, edición 30134136.