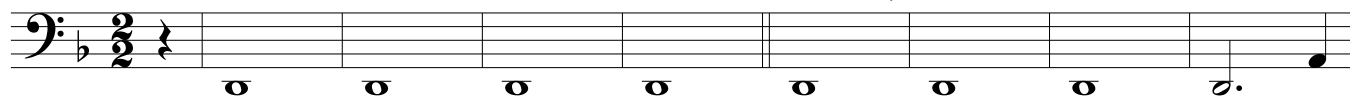


## Exsultet

CELLO

Paul Hillebrand

INTRO ( $\text{♩} = 72-74$ )Deacon/Priest/Cantor:  
Exult, let them exult...

9



17

D/P/C: Christ our light is risen. All: Christ our light is risen.



26

D/P/C: Be glad, let earth be glad...



34



42

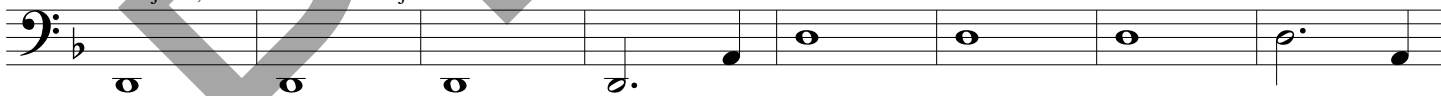
D/P/C: Christ our light is risen.

All: Christ our light is risen.

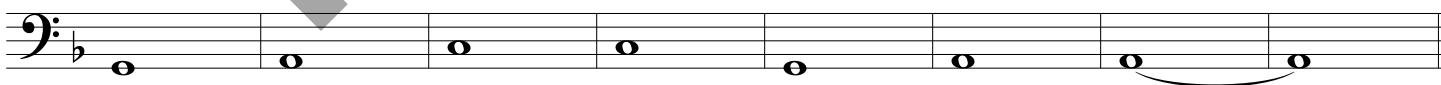


47

D/P/C: Rejoice, let Mother Church rejoice...



55



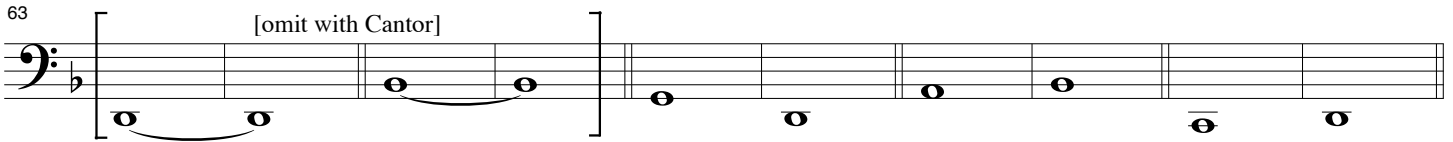
Music © 2012, Paul Hillebrand. Published by OCP, 5536 NE Hassalo, Portland, OR 97213. All rights reserved.

For use with the OCP choral octavo "Exsultet" (ed. 30113062)

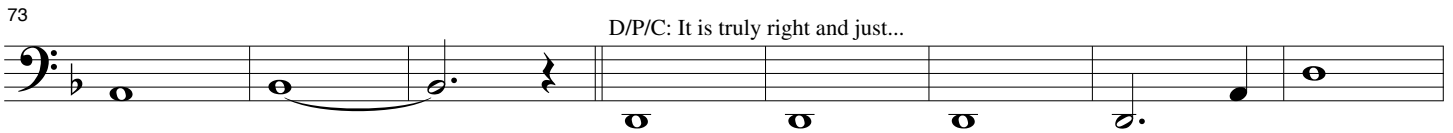
DIALOGUE

EXSULTET, Cello (2)

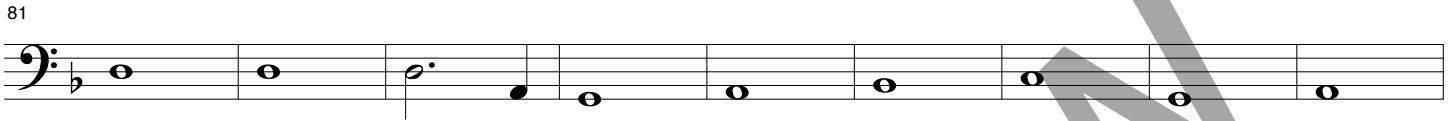
63 [omit with Cantor]




73 D/P/C: It is truly right and just...



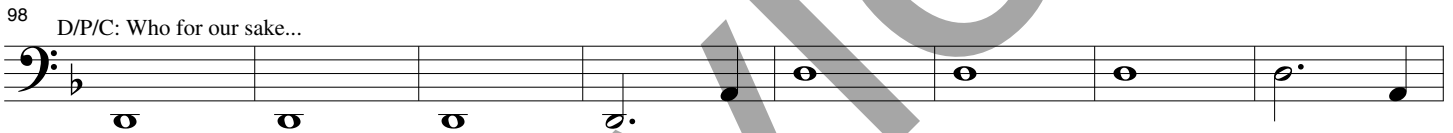
81



90 D/P/C: Christ our light is risen. All: Christ our light is risen.



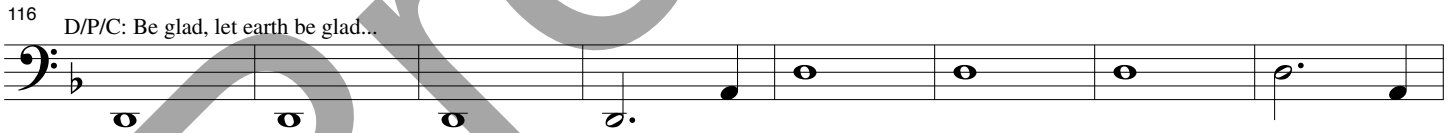
98 D/P/C: Who for our sake...



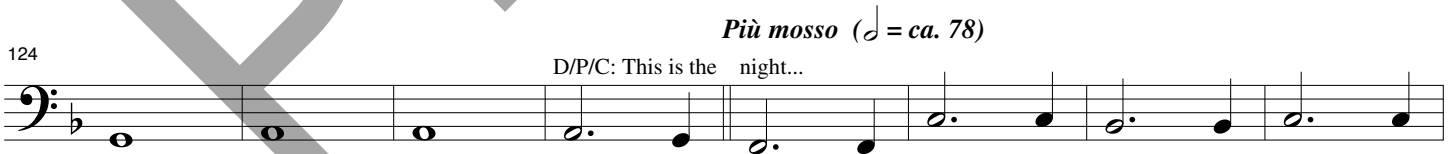
106 D/P/C: Christ our light is risen. All: Christ our light is risen.



116 D/P/C: Be glad, let earth be glad...



124 *Più mosso* (♩ = ca. 78)  
D/P/C: This is the night...



132



138 (This is the night...)

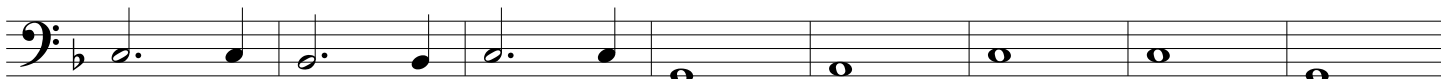


146

(This is the night...)



153



161

(This is the night...)



169

D/P/C: Christ our light is risen. All: Christ our light is risen.

**In a recitative style** (♩ = ♩)

177 D/P/C: O wonder of your humble care...



184



192

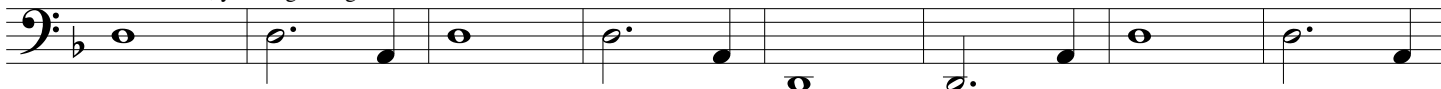
**In tempo** (♩ = ♩)

200 D/P/C: Christ our light is risen. All: Christ our light is risen.



208

D/P/C: On this, your night of grace...



216



EXSULTET, Cello (4)

224 D/P/C: Christ our light is risen. All: Christ our light is risen.

Musical staff for measure 224, featuring a bass clef and a key signature of one flat. The staff contains a sequence of notes: a whole note G2, a whole note F2, a whole note E2, a whole note D2, a whole note C2, a whole note B1, a whole note A1, and a whole note G1.

233 D/P/C: Therefore, O Lord...

Musical staff for measure 233, featuring a bass clef and a key signature of one flat. The staff contains a sequence of notes: a whole note G2, a whole note F2, a whole note E2, a whole note D2, a whole note C2, a whole note B1, a whole note A1, a whole note G1, a whole note F1, a whole note E1, a whole note D1, a whole note C1, a whole note B0, a whole note A0, a whole note G0, and a whole note F0.

241

Musical staff for measure 241, featuring a bass clef and a key signature of one flat. The staff contains a sequence of notes: a whole note G2, a whole note F2, a whole note E2, a whole note D2, a whole note C2, a whole note B1, a whole note A1, a whole note G1, a whole note F1, a whole note E1, a whole note D1, a whole note C1, a whole note B0, a whole note A0, a whole note G0, and a whole note F0.

249 D/P/C: Christ our light is risen. All: Christ our light is risen. D/P/C: Receive it as a pleasing fragrance...

Musical staff for measure 249, featuring a bass clef and a key signature of one flat. The staff contains a sequence of notes: a whole note G2, a whole note F2, a whole note E2, a whole note D2, a whole note C2, a whole note B1, a whole note A1, a whole note G1, a whole note F1, a whole note E1, a whole note D1, a whole note C1, a whole note B0, a whole note A0, a whole note G0, and a whole note F0.

257

Musical staff for measure 257, featuring a bass clef and a key signature of one flat. The staff contains a sequence of notes: a whole note G2, a whole note F2, a whole note E2, a whole note D2, a whole note C2, a whole note B1, a whole note A1, a whole note G1, a whole note F1, a whole note E1, a whole note D1, a whole note C1, a whole note B0, a whole note A0, a whole note G0, and a whole note F0.

264

Musical staff for measure 264, featuring a bass clef and a key signature of one flat. The staff contains a sequence of notes: a whole note G2, a whole note F2, a whole note E2, a whole note D2, a whole note C2, a whole note B1, a whole note A1, a whole note G1, a whole note F1, a whole note E1, a whole note D1, a whole note C1, a whole note B0, a whole note A0, a whole note G0, and a whole note F0.

270

Musical staff for measure 270, featuring a bass clef and a key signature of one flat. The staff contains a sequence of notes: a whole note G2, a whole note F2, a whole note E2, a whole note D2, a whole note C2, a whole note B1, a whole note A1, a whole note G1, a whole note F1, a whole note E1, a whole note D1, a whole note C1, a whole note B0, a whole note A0, a whole note G0, and a whole note F0.

278

Musical staff for measure 278, featuring a bass clef and a key signature of one flat. The staff contains a sequence of notes: a whole note G2, a whole note F2, a whole note E2, a whole note D2, a whole note C2, a whole note B1, a whole note A1, a whole note G1, a whole note F1, a whole note E1, a whole note D1, a whole note C1, a whole note B0, a whole note A0, a whole note G0, and a whole note F0.

286 D/P/C: Christ our light is risen. All: Christ our light is risen. D/P/C: Amen. All: Amen.

Musical staff for measure 286, featuring a bass clef and a key signature of one flat. The staff contains a sequence of notes: a whole note G2, a whole note F2, a whole note E2, a whole note D2, a whole note C2, a whole note B1, a whole note A1, a whole note G1, a whole note F1, a whole note E1, a whole note D1, a whole note C1, a whole note B0, a whole note A0, a whole note G0, and a whole note F0. The staff concludes with the markings *rit.* and *molto rit.*