

# ALLELUIA! LOVE IS ALIVE

VERSES (♩. = ca. 60)

Capo 1: (D)  
Eb

(G)  
Ab

(D)  
Eb

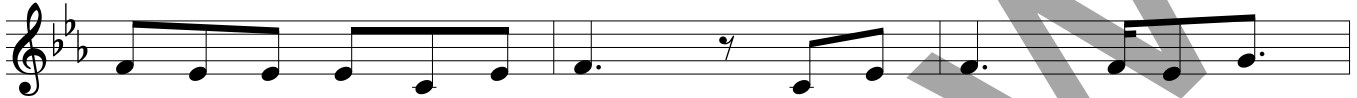


1. Peo-ple of God, see the morn-ing is new; ♪ rise from your sleep-ing and
2. Peo-ple of God, let your fear fall a - way. Your chains have been bro - ken; a -
3. Peo-ple of God now re - joic - ing in Christ, ♪ car - ry your joy to the

(G)  
Ab

(A)  
Bb

(G)  
Ab



1. run to the tomb. Come and see! Come and see! He is a -
2. ban - don your shame. Lift your hearts! Lift your hearts! He is a -
3. dark - ness of night. Tell the world! Tell the world! He is a -

(D)  
Eb

NC

(D)  
Eb



1. live! \_\_\_\_\_ A grave that is emp - ty, a
2. live! \_\_\_\_\_ ♪ Here now is mer - cy em -
3. live! \_\_\_\_\_ ♪ Hear the good news of this

(G)  
Ab

(D)  
Eb

(G)  
Ab



1. prom - ise ful - filled. God who was with us is here with us still. He is
2. brac - ing your soul; here the ful - fill - ment that once was fore - told. It is
3. glo - ri - ous day, ev - ery heart sing - ing as heav - en pro - claims: He is

(A)  
Bb

(G)  
Ab

(D)  
Eb



1. here! He is here! He is a - live! \_\_\_\_\_
2. true! It is true! He is a - live! \_\_\_\_\_
3. Lord! He is Lord! He is a - live! \_\_\_\_\_

Text and music: Steve Angrisano, b. 1965, Jesse Manibusan, b. 1958, and Sarah Hart, b. 1968, © 2012, Steve Angrisano, Sarah Hart and Jesse Manibusan.  
Published by Two by Two Ministries and Spirit & Song®, a division of OCP. Administered by Spirit & Song®, a division of OCP. All rights reserved.

REFRAIN

(D) Eb // (A) Bb (G) Ab (D) Eb (Bm) Cm (A sus4) Eb/Bb

Al-le - lu - ia! Love is a-live;\_ con- quered the grave\_ and de-feat-

(G) Ab (D) Eb (A) Bb (G) Ab (D) Eb (Bm) Cm (A sus4) Eb/Bb

- ed the night.\_ Al - le - lu - ia! Love is a-live!\_ The Son has a - ris-en for

(G) Ab (D/F#) Eb/G (Em7) Fm7 (let ring) (A) Bb (l.r.) 1, 2  
(D) Eb NC

all. Your peo - ple sing al - le - lu - ia!

(D) Eb NC D.C. **Final** (D) Eb NC (D) Eb NC

ia!