

Lord, We Share In This One True Bread

ST. THOMAS MORE CENTRE
Christopher Walker

INTRO: (♩ = c. 66)

*Solo Instrument

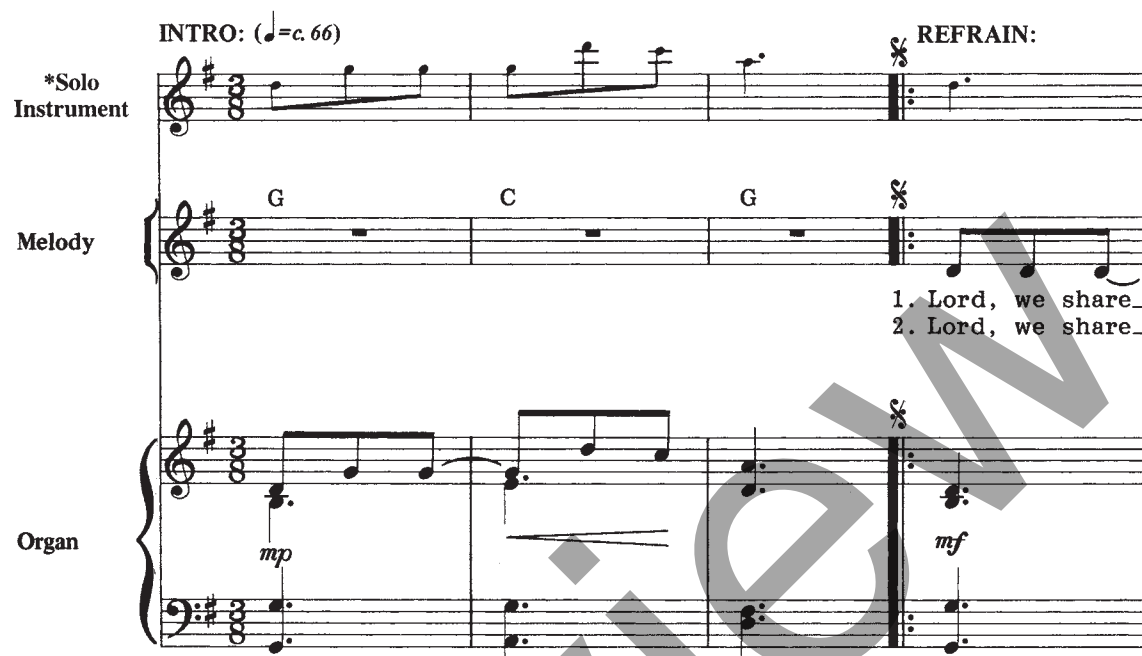
Melody

Organ

REFRAIN:

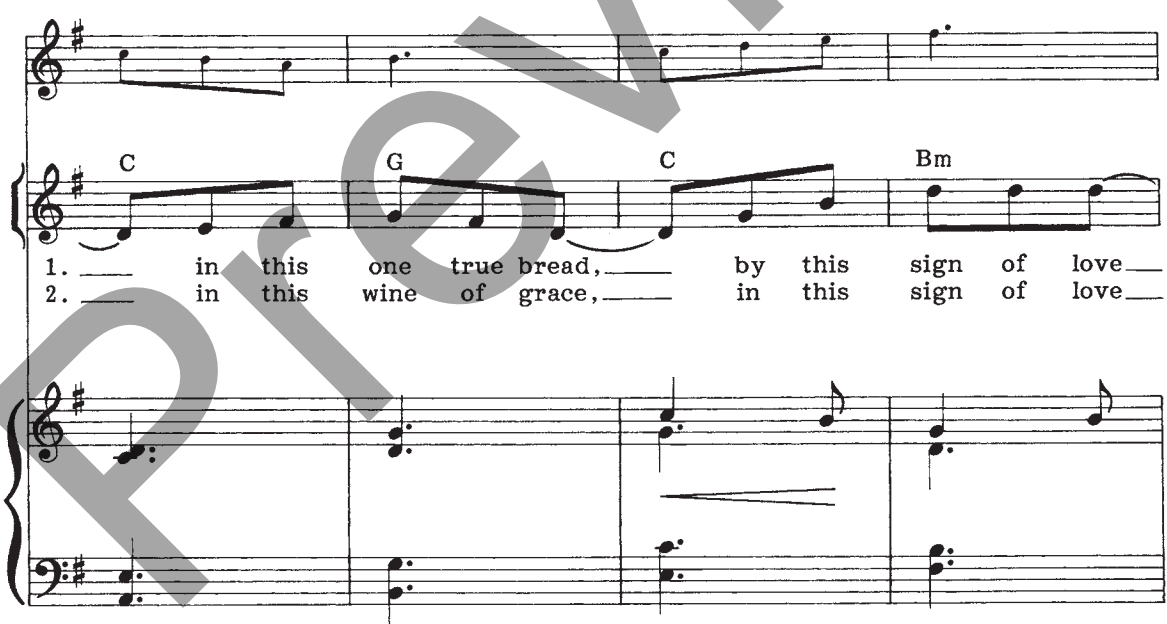
1. Lord, we share_

2. Lord, we share_



1. ___ in this one true bread, ___ by this sign of love_

2. ___ in this wine of grace, ___ in this sign of love_



Original refrain for use during the Preparation of The Gifts:

Bread we bring to the God of love as an offering at your table laid,
Bread of the earth, work of our hands.

Wine we bring to the God of love as an offering at your table laid,
Fruit of the vine, work of our hands.

© 1982, 1983, 1986, Christopher Walker. Published in England by St. Thomas More Centre, London.
Published and distributed in North America by OCP Publications, 5536 NE Hassalo, Portland, OR 97213. All rights reserved.

*Solo Instrument Part found on page 6.
Assembly Edition found on pages 7 & 8.

E Am D7 C G

1. ___ may our souls be fed, ___ gift of your Son,
2. ___ may we see your face, ___ gift of your Son,

1 2

1 Am G C D 2 Am

1. mak - ing us one. 2. mak - ing us

to Verses Last time only Fine

G C D7 to Verses Last time only Fine

2. one.

to Verses Last time only Fine

VERSES:

Soprano

Alto

Tenor

Bass

1. Lord, we bring you our doubt: for not
 2. Lord, we bring you our strength: in the
 3. Lord, we bring you our faith: through the

p

Soprano

Alto

Tenor

Bass

1. trust-ing you, for not hear-ing you, in your mer-cy for-
 2. work we do, may we fol-low you, to the praise of your
 3. gift of prayer may we learn to share in the love you have

A Em A7 D

1. give. _____
 2. name. _____
 3. giv'n; _____

When we've gone a-stray from your
 Fa-ther, make me strong, though the
 make us stead-fast, 'til we

mp

G C Am D D7 D.S.

1. gen-tle way, in your mer-cy for-give. _____
 2. work be long, to the praise of your name. _____
 3. come at last to your king-dom in heav'n. _____

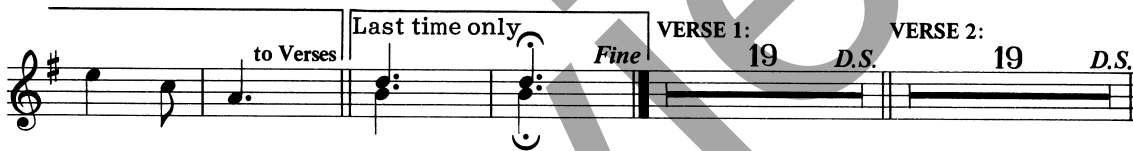
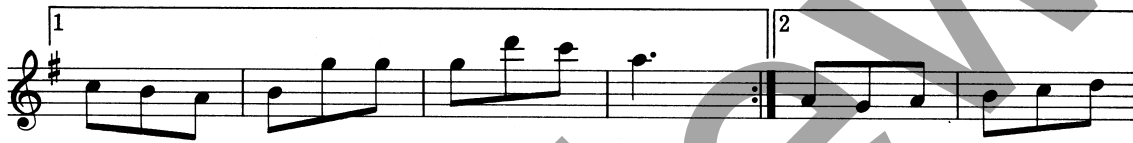
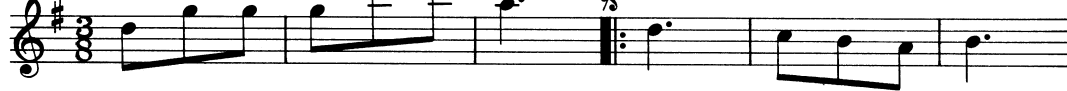
D.S.

Lord, We Share In This One True Bread

ST. THOMAS MORE CENTRE
Christopher Walker

SOLO INSTRUMENT

INTRO: (♩ = c. 66)



VERSE 3:



*This part may be played during each verse.

Assembly Edition

LORD, WE SHARE IN THIS ONE TRUE BREAD
(Alternate Refrain) ST. THOMAS MORE CENTRE
Christopher Walker

INTRO: ♩ = ca. 66 REFRAIN:

Bread we bring — to you God of love —
Wine we bring — to you God of love —

— as an of - fer - ing — at your tab - le laid, — bread of the
— as an of - fer - ing — at your tab - le laid, — fruit of the

1 earth, work of our hands. 2 work of our hands.

to Verses 3 *Fine* VERSES:

1. Lord, we bring you our doubt:
2. Lord, we bring you our strength:
3. Lord, we bring you our faith:

1. for not trust - ing you, for not hear - ing you, in your
2. in the work we do may we fol - low you to the
3. through the gift of prayer may we learn to share in the

1. mer - cy for - give. — When we've gone a - stray from your
2. praise of your name, — Fa - ther, make us strong though the
3. love you have giv'n; — make us stead - fast til we

1. gen - tle way, in your mer - cy for - give. — (to Refrain)
2. work be long to the praise of your name. — (to Refrain)
3. come at last to your king - dom in heav'n. — (to Refrain)

© 1982, Christopher Walker. Published in England by St. Thomas More Centre, London.
Published and distributed in North America by OCP Publications, 5536 NE Hassalo, Portland, OR 97213.