

PSALMS

54

You Are My Inheritance, O Lord

Psalm 16

Psalm 16:1-2a, 5, 7-8, 9-10, 11

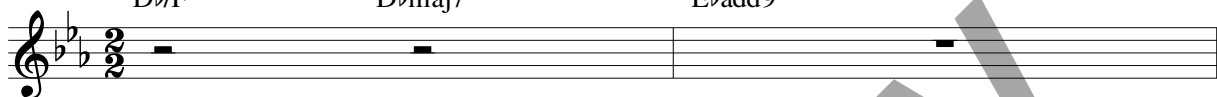
Timothy R. Smith

(♩ = ca. 54)

Capo 1: (C/E)
Db/F

(Cmaj7)
Dbmaj7

(Dadd9)
Ebadd9



♩ REFRAIN: 1st time: Cantor, All repeat; thereafter: All

(Bm7)

Cm7
Melody

(G)

Ab

(Bm7)

Cm7

(D/F#)

Eb/G

(Gmaj7)

Abmaj7

(Asus4)

Bbsus4

1-5

(C/E) (Cmaj7) (Dadd9)
Db/F Dbmaj7 Ebadd9

(1st time: D.S.)
to Verses

Final

(G/B) (D/F#) (C/E) (Cmaj7) (Dadd9)
Ab/C Eb/G Db/F Dbmaj7 Ebadd9 (let ring) *Fine*

VERSE 1

(D)

Eb

(G/B)

Ab/C

(G)

Ab

(D/F#)

Eb/G

(G)

Ab

(D/A)

Eb/Bb

(Dsus2)

Ebsus2

(C)

Db

Refrain text © 1969, 1981, 1997, ICEL. All rights reserved. Used with permission. Verses text © 1970, 1997, 1998, CCD. All rights reserved. Used with permission.

Music © 2007, 2008, Timothy R. Smith. Published by OCP. All rights reserved.

(G/D) (G/B) (A/C#) (D) (Gsus2) (Asus4) (A)
 Ab/Eb Ab/C Bb/D Eb Absus2 Bbsus4 Bb *D.S.*

1. cup, you it is who hold fast my lot."

VERSE 2

(G) (D/A) (Gmaj7) (Gsus2)
 Ab Eb/Bb Abmaj7 Absus2

2. I bless the LORD who counsels me; even in the night my heart ex -

(D/F#) (Dsus2) (C/E) (D) (C) (G/D)
 Eb/G Ebsus2 Db/F Eb Db Ab/Eb

2. horts me. I set the LORD ever before me; with

(G/B) (A/C#) (D) (Gmaj7) (Asus4) (A)
 Ab/C Bb/D Eb Abmaj7 Bbsus4 Bb *D.S.*

2. him at my right hand I shall not be disturbed.

VERSE 3

(Gsus2) (D/A) (Gsus2) (D)
 Absus2 Eb/Bb Absus2 Eb

3. There-fore my heart is glad and my soul re-joic-es, my

(Gsus2) (D/A) (D) (C/E)
 Absus2 Eb/Bb Eb Db/F

3. bod-y, too, a-bides in con-fi-dence, for you will not a-ban-

(C) (G/D)
 Db Ab/Eb

3. - don my soul to the neth-er-world, nor will you

(G/B) (A/C#) (D) (Gmaj7) (Asus4) (A)
 Ab/C Bb/D Eb Abmaj7 Bbsus4 Bb *D.S.*

3. suf-fer your faith-ful one to un-der-go cor-rup-tion.

VERSE 4

(Dsus2) Eb sus2 (D) Eb (Gadd9/B) Ab add9/C (Gmaj7) Ab maj7 (A) Bb (Bm7) Cm7

4. You will show me, show me the path to life,

(Bm9/A) Cm9/Bb (G) Ab (D/F#) Eb/G (C/E) Db/F (G/D) Ab/Eb

4. full-ness of joys in your presence, the delights at your

(C) Db (G/D) Ab/Eb (G/B) Ab/C (G) Ab (D) Eb *D.S. al fine*

4. right hand for - ev - er, for - ev - er.

