

Let All the Earth

Psalm 66

The Revised Grail Psalms

Psalm 66:1-3, 4-5, 6-7, 16, 20

Scott Soper

INTRO Driving (♩ = 128-132)

Capo 3: (Dadd9)

(G6,9)

(Dadd9)

Fadd9

Bb6,9

Fadd9



♩ REFRAIN: 1st time: Cantor, All repeat; thereafter: All

(C) (Gmaj7) (Em7)
Eb Bbmaj7 Gm7

(Dadd9)
Fadd9



(G6,9)
Bb6,9

(Em7)
Gm7

(Badd9)
Dadd9



(Em7)
Gm7

(D/F#)
F/A

(G)
Bb

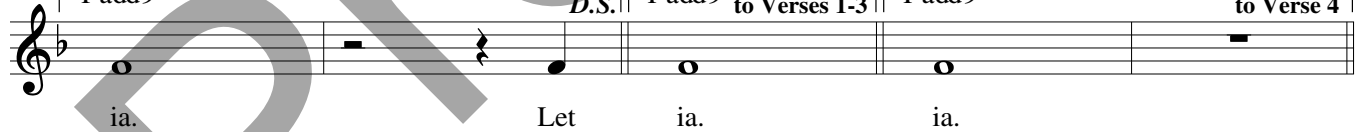
(Em7/A)
Gm7/C



1
(Dadd9)
Fadd9

2-4
(Dadd9)
Fadd9

5
(Dadd9)
Fadd9



VERSE 1

(G6,9)
Bb6,9

(Dadd9)
Fadd9

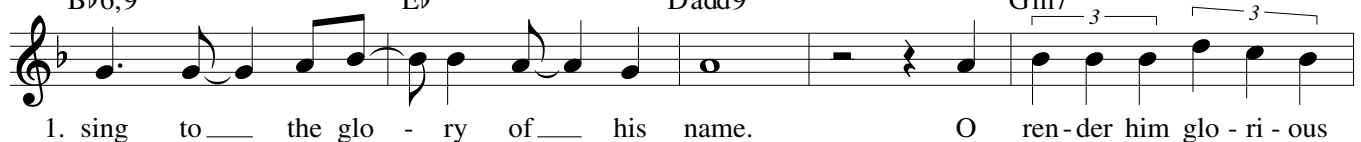


(G6,9)
Bb6,9

(C)
Eb

(Badd9)
Dadd9

(Em7)
Gm7



Refrain text © 1969, 1981, 1997, ICEL. All rights reserved. Used with permission. Verses text © 2010, Conception Abbey/The Grail, admin. by GIA Publications, Inc. All rights reserved. Used with permission. Music © 2013, Scott Soper. Published by OCP. All rights reserved.

(D/F#) F/A (G6,9) Bb6,9 (Em7) Gm7 (Em7/A) Gm7/C *D.S.*

1. praise. Say to God, "How awe - some your deeds!" Let

VERSE 2 (G6,9) Bb6,9 (Dadd9) Fadd9

2. "Be - fore you all the earth shall bow down, shall

(G6,9) Bb6,9 (C) Eb (Badd9) Dadd9 (Em7) Gm7

2. sing to you, sing to your name!" Come and see the works of God: _

(D/F#) F/A (G6,9) Bb6,9 (Em7) Gm7 (Em7/A) Gm7/C *D.S.*

2. awe - some his deeds a - mong the chil - dren of men. Let

VERSE 3 (G6,9) Bb6,9 (Dadd9) Fadd9

3. He turned the sea in - to dry land;

(G6,9) Bb6,9 (C) Eb (Badd9) Dadd9 (Em7) Gm7

3. they passed through the riv - er on foot. Let our joy, then, be in him; _

(D/F#) F/A (G6,9) Bb6,9 (Em7) Gm7 (Em7/A) Gm7/C *D.S.*

3. he rules for - ev - er by his might. Let

VERSE 4

(G) (A/G) (F#m7) (Bm) (G) (C)
 B♭ C/B♭ Am7 Dm B♭ E♭

4. Come and hear, all who fear God; I will tell what he did for my

(A) (Bm) (A/C#)
 C Dm C/E

4. soul. Blest be God, who did not reject my prayer, nor with-

(D) (Em7) (Em7/A)
 F Gm7 Gm7/C

4. hold from me his merciful love. Let

D.S. al Coda

⊕ CODA
 (Em7) (D/F#) (G) (Em7/A)
 Gm7 F/A B♭ Gm7/C

ia. Al-le-lu-ia, al-le-lu-

(Bm) (D7/A) (Gadd9) (D/F#) (Em7) (D/F#) (Gmaj7) (A)
 Dm F7/C B♭add9 F/A Gm7 F/A B♭maj7 C

ia. Al-le-lu-ia, al-le-lu-

(Dadd9) (C) (Gmaj7) (Em7) (Dadd9)
 Fadd9 E♭ B♭maj7 Gm7 Fadd9

ia.