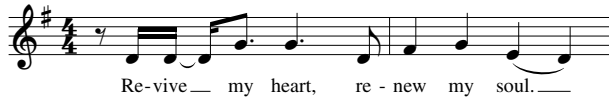


# Just Like You

Matt Maher

Edition # 30125735



**Intro** |G Am7 |D C |G Am7 |D C ||

**Verse 1**  
 G Am7 D C Revive my heart, renew my soul.  
 G Am7 D C In you, O Lord, I am made whole.  
 G Am7 D C No more in fear will I wander,  
 G Am7 D C 'cause you're my God, my Lord and lover.  
 Em C D Em A7 Like a burning fire be my one desire.

**Refrain 1**  
 G D C I want to be holy just like you.  
 G D C I want to go where you lead me to.  
 Em A With reckless abandon to your truth,  
 Cm D G Am7 I want to fall deeper in love with you.  
 |D C |G Am7 |D C |

**Verse 2**  
 G Am7 D C Oh, lift me up, God, my Father.  
 G Am7 D C In all this world there is no other.  
 G Am7 D C I'm dancing in your holy presence,  
 G Am7 D C and your glory fills all my senses.  
 Em C D Em A7 Like a burning fire be my one desire.

**Refrain 2**  
 G D C I want to be holy just like you.  
 G D C I want to go where you lead me to.  
 Em A With reckless abandon to your truth,  
 Cm D Dsus4 D I want to fall deeper in love with you.

**Guitar Solo**  
 |G D |C |G D |C |  
 |Em |A |Cm Dm Eb F |G |

**Refrain 3**  
 Dsus4 G D C I want to be holy just like you.  
 G D C I want to go where you lead me to.  
 Em A With reckless abandon to your truth,  
 Cm Dsus4 G/D I want to fall deeper in love with you.  
 G D C I want to be holy just like you.  
 G D C I want to go where you lead me to.  
 Em A With reckless abandon to your truth,  
 Cm B I want to fall deeper in love with you,  
 Em B/D# G/D A/C# Cm and deeper and deeper and deeper and deeper  
 C° :|  
 in love with you,  
 Em B/D# G/D A/C# Cm and deeper and deeper and deeper and deeper  
 C° NC in love with you.  
 |G Am7 |D C |G Am7 |D |  
 C G Am7 D C G Am7 D I want to be ho - ly. I want to be ho - ly.  
 C G Am7 D C G Am7 D C G I want to be ho - ly. I want to be ho - ly.