

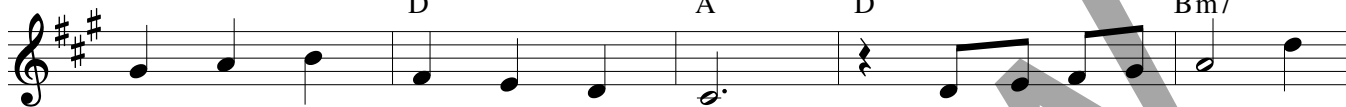
NIGHT OF SILENCE

Capo 2: (G) (C/G) (G) (C/G) (G) (C/G) (G) (D)
 A D/A A D/A A D/A A E



1. Cold are ___ the peo - ple, ___ win - ter ___ of life, We trem - ble in
 2. Voice in ___ the dis - tance, ___ call in ___ the night, On wind you en -
 3. Spir - it ___ a - mong us, ___ shine like ___ the star, Your light that guides

(C) (G) (C) (Am7)
 D A D Bm7



1. shad - ows this cold end - less night, Fro - zen in the snow lie
 2. fold us, you speak of the light, Gen - tle on the ear you
 3. shep - herds and kings from a - far, Shim - mer in the sky so

(G) (Em) (C) (Am7) (D) (Bm7)
 A F#m D Bm7 E C#m7



1. ros - es sleep - ing, Flow - ers that will ech - o the sun -
 2. whis - per soft - ly, Ru - mors of a dawn so em - brac -
 3. emp - ty, lone - ly, Ris - ing in the warmth of your Son's

(E) (Am7) (D) (G) (D/F#) (Em)
 F# Bm7 E A E/G# F#m



1. rise, Fire of hope is our ___ on - ly warmth,
 2. ing, Breath - less love a - waits ___ dark - ened souls,
 3. love, Star un - know - ing of ___ night and day,

(G/D) (D) (C/G) (G) (C/G)
 A/E E D/A A D/A



1. Wea - ry, its flame will be dy - ing soon. ___
 2. Soon will we know of the morn - ing. ___
 3. Spir - it we wait for your lov - ing Son. ___

(G) (C/G) (G) (C/G) (G) (C/G) Final
 A D/A A D/A A D/A A



(Kbd)

Note: "Night of Silence" was written to be sung simultaneously with "Silent Night." It is suggested that selected voices hum "Silent Night" while the remaining voices sing the final verse of "Night of Silence." Likewise, the song "Silent Night" may be sung by the choir and assembly as the instruments play "Night of Silence."

Text and music: Daniel Kantor, b. 1960, © 1984, GIA Publications, Inc. All rights reserved. Used with permission.

30114502

Edition #30114502