

We Go Forth

for Rev. Msgr. John J. Lenihan

Bob Moore

INTRO With conviction (♩ = ca. 63)

Keyboard

REFRAIN

Descant

We go forth to love God.

Soprano (Melody)

We go forth to love and serve our God, bear - ing

Alto

We go forth, forth to love and serve our God, bear - ing

We go forth — to love and serve — our God, bear - ing

© 1997, Robert C. Moore. Published by OCP, 5536 NE Hassalo, Portland, OR 97213. All rights reserved.

The image shows a musical score for the hymn "We Go Forth". It consists of two systems of music. Each system includes a vocal line (Soprano and Bass) and a piano accompaniment. The key signature is one flat (B-flat), and the time signature is 4/4. The lyrics are: "We go forth to serve. light and hope to ev-'ry na-tion. With the light, light to ev-'ry na-tion. With the light to ev-'ry na-tion. With the In the Spir-it and the Word we go forth, we go Word in our hearts, and the Spir-it as our breath, we go".

We go forth to serve. _____
 light and hope to ev - 'ry na - tion. With the
 light, light to ev - 'ry na - tion. With the
 light _____ to ev - 'ry na - tion. _____ With the

In the Spir - it and the Word we go forth, we go
 Word in our hearts, and the Spir - it as our breath, _____ we go

1-3 to Verses

forth to build the king - dom.

1-3 to Verses

forth now to build the king - dom.

forth to build the king - dom.

1-3 to Verses

This system contains three staves. The top staff is a vocal line with lyrics 'forth to build the king - dom.' and a '1-3' repeat sign. The middle staff is a vocal line with lyrics 'forth now to build the king - dom.' and a '1-3' repeat sign. The bottom staff is a piano accompaniment with lyrics 'forth to build the king - dom.' and a '1-3' repeat sign. A large watermark 'PREVIEW' is overlaid on the right side.

Final rit. div. Fine

king - dom. We go forth now to build king - dom.

Final rit. Fine

king - dom. We go forth now to build the king - dom.

Final rit. Fine

This system contains three staves. The top staff is a vocal line with lyrics 'king - dom. We go forth now to build king - dom.' and markings 'Final', 'rit.', 'div.', and 'Fine'. The middle staff is a vocal line with lyrics 'king - dom. We go forth now to build the king - dom.' and markings 'Final', 'rit.', and 'Fine'. The bottom staff is a piano accompaniment with lyrics 'king - dom. We go forth now to build the king - dom.' and markings 'Final', 'rit.', and 'Fine'. A large watermark 'PREVIEW' is overlaid on the right side.

VERSES

1. We who have ris - en from the wa - ters of new birth, we pro -
 2. We who are chal - lenced at the ta - ble of the word are sent
 3. We who are nour - ished by this sac - ri - fice of love, now go

1. claim Je - sus ris - en to the ends — of the earth. *D.S.*
 2. forth with a mis - sion to pro - claim what we have heard.
 3. forth from this ban - quet sing - ing thanks — be to God.

We Go Forth

for Rev. Msgr. John J. Lenihan
(Guitar/Vocal)

Bob Moore

INTRO With conviction (♩ = ca. 63)

Capo 3: (D) (F#m/C#) (Bm) (Asus4) (F#m/A) (G) (E/G#)
F Am/E Dm Csus4 Am/C B♭ G/B

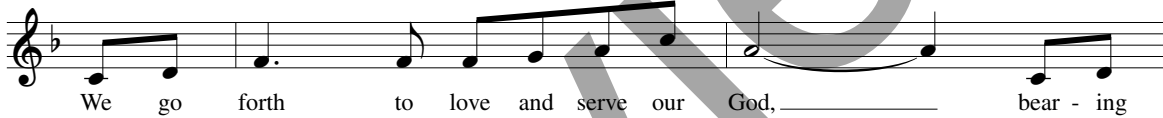


(A) (F#m/A#) (Bm) (G) (Asus4) (A) (Em/A) (D)
C A/C# Dm B♭ Csus4 C Gm/C F

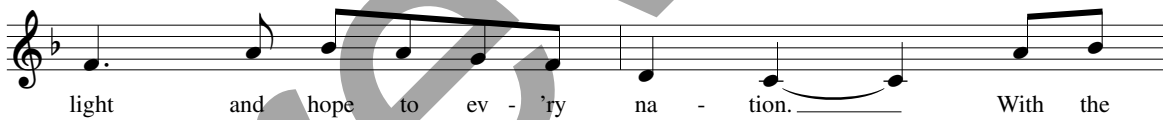


REFRAIN

♩ (Em/A) (D) (Em7) (D/F#) (G) (Em/A)
Gm/C F Gm7 F/A B♭ Gm/C



(D) (Em7) (D/F#) (G) (A) (D/F#) (Em7)
F Gm7 F/A B♭ C F/A Gm7



(D) (F#m/C#) (Bm) (Asus4) (F#m/A) (G) (E/G#) (A) (F#m/A#)
F Am/E Dm Csus4 Am/C B♭ G/B C A/C#



(Bm) (G) (Asus4) (A) 1-3 (Em/A) (D) (Bm) (G) (Asus4) (A)
Dm B♭ Csus4 C Gm/C F Dm B♭ Csus4 C to Verses



Final
 (A/B) (Bm) (Gmaj7) (D/F#) (Em7) (Gmaj7) (A7sus4) (A7) (Em/A) (D)
 C/D Dm Bbmaj7 F/A Gm7 Bbmaj7 C7sus4 C7 Gm/C F

rit. *Fine*

king - dom. We go forth now to build the king - dom.

VERSES

(D) (D/F#) (G) (Em7) (Em/G) (A) (A/G)
 F F/A Bb Gm7 Gm/Bb C C/Bb

1. We who have ris - en from the wa - ters of new birth, we pro -
 2. We who are chal - lenced at the ta - ble of the word are sent
 3. We who are nour - ished by this sac - ri - fice of love, now go

(F#m7) (F#m/A) (Bm) (Em/G) (D/F#) (Em7) (D/F#) (Gadd9) (A)
 Am7 Am/C Dm Gm/Bb F/A Gm7 F/A Bbadd9 C

D.S.

1. claim Je - sus ris - en to the ends of the earth.
 2. forth with a mis - sion to pro - claim what we have heard.
 3. forth from this ban - quet sing - ing thanks be to God.

A/B A/G D/F# E/G# Em7 Em/G Em/A
 F#/A# F#m7 F#m/A F#m/C# Gmaj7 Gadd9

Assembly Edition

WE GO FORTH Bob Moore

REFRAIN

We go forth to love and serve our God, bear - ing
light and hope to ev - 'ry na - tion. With the
Word in our hearts, and the Spir - it as our breath, we go
forth now to build the king - dom.

1-3 to Verses

Final Fine

king - dom. We go forth now to build the king - dom.

VERSES

1. We who have ris - en from the wa - ters of new birth, we pro -
2. We who are chal - lenced at the ta - ble of the word are sent
3. We who are nour - ished by this sac - ri - fice of love, now go

to Refrain

1. claim Je - sus ris - en to the ends of the earth.
2. forth with a mis - sion to pro - claim what we have heard.
3. forth from this ban - quet sing - ing thanks be to God.

© 1997, Robert C. Moore. Published by OCP, 5536 NE Hassalo, Portland, OR 97213. All rights reserved.

For reprint permissions, please visit OneLicense.net or contact us at 1-800-663-1501.