

WE COME AS MEMBERS OF THE CHURCH (Trumpet I in B \flat), pg. 2 of 2

VERSE 4

83

mf

87

91

VERSE 5

95

mp

99

102

VERSE 6

107

f

110

mf *f*

113

mf (2)

116

rit.

We Come as Members of the Church

TRUMPET II in B \flat

Andrew Paul Fredel

INTRO *Broadly, moving forward* ($\text{♩} = \text{ca. } 69$)

2

f

8

11

2

p

p

20

f

VERSES 1, 2

27

(tacet 2nd time)

mf legato e cantabile

31

35

VERSE 3

39

2

2

2

2

VERSE 3: alternate setting: Choir only, *a cappella*

51

4

25

WE COME AS MEMBERS OF THE CHURCH (Trumpet II in B \flat), pg. 2 of 2

VERSE 4

83

Musical staff for Verse 4, measures 83-86. The key signature is three sharps (F#, C#, G#). The time signature changes from 4/2 to 3/2, then to 4/2, and finally to 3/2. The music begins with a *mf* dynamic marking.

87

Musical staff for Verse 4, measures 87-90. The time signature changes from 3/2 to 4/2, then to 3/2, and finally to 4/2.

91

Musical staff for Verse 4, measures 91-94. The time signature changes from 4/2 to 3/2, then to 4/2, and finally to 3/2.

VERSE 5

95

Musical staff for Verse 5, measures 95-98. The staff contains rests with a '2' above each, indicating a two-measure rest. The time signature changes from 4/2 to 3/2, then to 4/2, and finally to 3/2.

VERSE 6

107

Musical staff for Verse 6, measures 107-109. The music begins with a *f* dynamic marking and features a long slur across the measures. The time signature changes from 4/2 to 3/2, then to 4/2, and finally to 3/2.

110

Musical staff for Verse 6, measures 110-112. The music begins with a *mf* dynamic marking and features a long slur. The time signature changes from 4/2 to 3/2, then to 4/2, and finally to 3/2. The staff ends with a *f* dynamic marking.

113

Musical staff for Verse 6, measures 113-115. The music begins with a *mf* dynamic marking and features a long slur. The time signature changes from 4/2 to 3/2, then to 4/2, and finally to 3/2.

116

Musical staff for Verse 6, measures 116-118. The music begins with a *rit.* (ritardando) marking and features a long slur. The time signature changes from 4/2 to 3/2, then to 4/2, and finally to 3/2.

We Come as Members of the Church

TROMBONE I

Andrew Paul Fredel

INTRO *Broadly, moving forward* ($\text{♩} = \text{ca. } 69$)

8

11

20

f

p

f

VERSES 1, 2

27 (tacet 2nd time)

mf legato e cantabile

31

35

VERSE 3

39

mf

VERSE 3: alternate setting: Choir only, *a cappella*

51

mf

WE COME AS MEMBERS OF THE CHURCH (Trombone I), pg. 2 of 2

VERSE 4

83

mf

87

91

VERSE 5

95

VERSE 6

107

f

110

mf *f*

113

mf

116

rit.

We Come as Members of the Church

TROMBONE II

Andrew Paul Fredel

INTRO *Broadly, moving forward* (♩ = ca. 69)

VERSES 1, 2

27 (tacet 2nd time)

VERSE 3

VERSE 3: alternate setting: Choir only, a cappella

WE COME AS MEMBERS OF THE CHURCH (Trombone II), pg. 2 of 2

VERSE 4

83

mf

87

91

VERSE 5

95

VERSE 6

107

f

110

mf *f*

113

mf

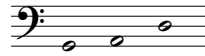
116

rit.

We Come as Members of the Church

TIMPANI

Andrew Paul Fredel



INTRO *Broadly, moving forward* ($\text{♩} = \text{ca. } 69$)

trm trm 4

f

10 trm

mp

18 2 trm

mp *f*

VERSES 1, 2

27 (tacet 2nd time)

33 2 trm

VERSE 3

39 2 2 2 2

VERSE 3: alternate setting: Choir only, *a cappella*

51 4 25

VERSE 4

83

89 2 trm

WE COME AS MEMBERS OF THE CHURCH (Timpani), pg. 2 of 2

VERSE 5

95

2 2 2 2

VERSE 6

107

f *tr* *mf* *tr* *tr*

113

2 *f* *rit.* *tr*

Preview