

# FIND US READY

INTRO *Gospel feel* (♩ = ca. 104)

Capo 3: (D/A) (Em/A) (Em9/A) (D/A) (Em/A) (D) (C7) (B♭7)  
 F/C Gm/C Gm9/C F/C Gm/C F E♭7 D♭7



## REFRAIN

(G/A) (D) (G/A) (D) (G/A) (D) (Em7)  
 B♭/C F B♭/C F B♭/C F Gm7



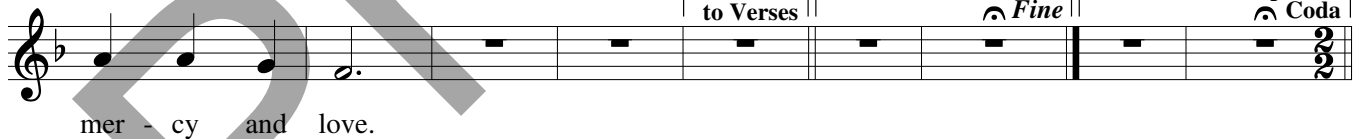
(D/F#)(G)(E7/G#) (A) (F#7(#9)/A#) (Bm) (D9/F#) (G) (C7) (D/A)  
 F/A B♭ G7/B C A7(#9)/C# Dm F9/A B♭ E♭7 F/C



(Em/A) (Em9/A)(D/A)(F#7/A#)(Bm) (C7) (D/A) (Em/A)  
 Gm/C Gm9/C F/C A7/C# Dm E♭7 F/C Gm/C



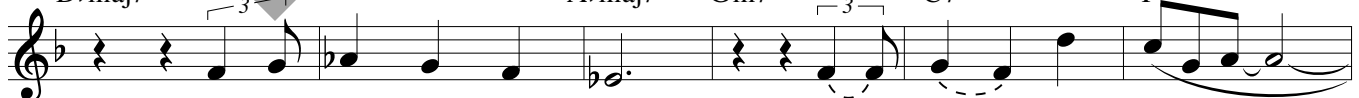
(Em9/A)(D/A) (Em/A)(D) (C7) (B♭7)  
 Gm9/C F/C Gm/C F E♭7 D♭7



1-3 (A7) C7 to Verses	Final (A7) (D) C7 F <i>Fine</i>	Optional Final Ending (A7) (D) C7 F to Optional Coda
--------------------------------	--	---

## VERSES

(B♭maj7) (Fmaj7) (Em7) (A7) (D)  
 D♭maj7 A♭maj7 Gm7 C7 F



1. We must wait for the Lord for we know not the time.
2. We must make straight the path, God's love re - vealed.
3. Lift - ing up those bowed down, we pre - pare for our God.

Text and music: Tom Booth, b. 1961, © 1993, Tom Booth. Published by Spirit & Song®, a division of OCP. All rights reserved.

(D/C) F/E $\flat$  (G/B) B $\flat$ /D (Gm/B $\flat$ ) B $\flat$ m/D $\flat$  (D/A) F/C (E7/G $\sharp$ ) G7/B

1. \_\_\_ So here and to - day \_\_\_ we gath - er and pray, \_\_\_ dis -  
 2. \_\_\_ With sin cast a - side, \_\_\_ God's mer - cy a - live, \_\_\_ ?  
 3. \_\_\_ Re - joyce in the Lord, \_\_\_ for hope has been born \_\_\_ in

(G) B $\flat$  (D/F $\sharp$ ) F/A (Em7) Gm7 (Em7/D) Gm7/F (C7) E $\flat$ 7 D.S.

1. cov - er - ing love in our \_\_\_ midst. \_\_\_  
 2. fear not for here is your \_\_\_ God. \_\_\_  
 3. hearts where our God finds a \_\_\_ home. \_\_\_

OPTIONAL CODA ( $\text{♩}$  = ca. 128)

(D) F (G/D) B $\flat$ /F (D) F (D) F (G/D) B $\flat$ /F (D) F

tacet

Brick \_\_\_ by brick, stone \_\_\_ by stone, find us

(Em7) Gm7 (D/F $\sharp$ ) F/A (G) B $\flat$  (E7/G $\sharp$ ) G7/B (A) C (F $\sharp$ 7(#9)/A $\sharp$ ) A7(#9)/C $\sharp$

work - ing \_\_\_ and lov - ing \_\_\_ and do - ing \_\_\_ your will. Find us

(Bm) Dm (D9/F $\sharp$ ) F9/A (G) B $\flat$  (C7) E $\flat$ 7 (D/A) F/C (Em/A) Gm/C

read - y, Lord, faith - ful \_\_\_ in love, build - ing the king - dom that's

(Gmaj7/A) B $\flat$ maj7/C (D/A) F/C (Em/A) Gm/C (D) F (G/D) B $\flat$ /F

As needed	Final
(D) F	(D) F //
tacet	<i>Fine</i>

here and \_\_\_ a - bove. \_\_\_ Brick \_\_\_ by