



# ST. THOMAS MORE CHORAL SERIES

## The Pilgrims' Alleluia

Assembly, Two-part Choir, Keyboard, Guitar, and B♭ Trumpet

James Walsh

INTRO *Dancelike* (♩ = ca. 138)

Keyboard

REFRAIN Cantor

© 1997, James Walsh. Published by OCP. All rights reserved.

From the collection PRAISE BE TO CHRIST Octavo Packet #11893 Compact Disc #11894

MUSIC · WORSHIP · SERVICE

1.800.548.8749

ocp.org



**REFRAIN All**

Al - le - lu - ia, al - le - lu - ia,

al - le - lu - ia, al - le - lu - ia. *Fine*

**VERSES**

**Descant**

1. Strong is your love. Might - y your word.  
 2. Spir - it of God, mes - sage of truth,  
 3. All - ho - ly God: Fa - ther of Light,  
 4. Might - y is God, ho - ly his name.

**Melody**

1. Strong is your love. Might - y your word. Speak to us  
 2. Spir - it of God, come to our hearts. Mes - sage of  
 3. All - ho - ly God: Fa - ther of Light, Word in our  
 4. Might - y is God, ho - ly his name. Be here with

*D.S.*

1. Speak to us now, Al - le - lu - ia.  
 2. here a - mong us, Al - le - lu - ia.  
 3. Word and Spir - it: Al - le - lu - ia.  
 4. Be here with us; Al - le - lu - ia.

*D.S.*

1. now, o - pen our hearts, Al - le - lu - ia.  
 2. truth, here a - mong us, Al - le - lu - ia.  
 3. midst, Spir - it and life: Al - le - lu - ia.  
 4. us, teach us your way, Al - le - lu - ia.

*D.S.*

# The Pilgrims' Alleluia

(Guitar/Vocal)

James Walsh

**INTRO** *Dancelike* (♩ = ca. 138)

A E D Bm C#m F#m

**REFRAIN** 1st time: Cantor; thereafter: All

F#m C#m F#m E A

E **1** D Bm C#m F#m *D.S.* **2-5, Final** F#m C#m F#m *to Verses* *Fine*

**VERSES**

**Descant**

F#m C#m F#m D

1. Strong is your love. Might - y your word.  
 2. Spir - it of God, mes - sage of truth,  
 3. All - ho - ly God: Fa - ther of Light,  
 4. Might - y is God, ho - ly his name.

**Melody**

1. Strong is your love. Might - y your word. Speak to us  
 2. Spir - it of God, come to our hearts. Mes - sage of  
 3. All - ho - ly God: Fa - ther of Light, Word in our  
 4. Might - y is God, ho - ly his name. Be here with

B C#m F#m D Bm C#m *D.S.*

1. Speak to us now, Al - le - lu - ia.  
 2. here a - mong us, Al - le - lu - ia.  
 3. Word and Spir - it: Al - le - lu - ia.  
 4. Be here with us; Al - le - lu - ia.

*D.S.*

1. now, o - pen our hearts, Al - le - lu - ia.  
 2. truth, here a - mong us, Al - le - lu - ia.  
 3. midst, Spir - it and life: Al - le - lu - ia.  
 4. us, teach us your way, Al - le - lu - ia.

# The Pilgrims' Alleluia

5

B $\flat$  TRUMPET

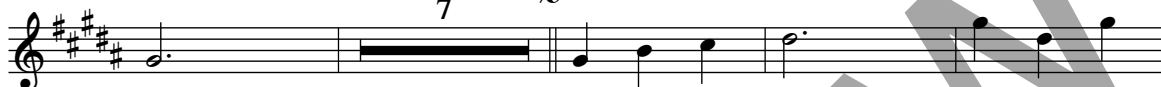
James Walsh

INTRO *Dancelike* ( $\text{♩} = \text{ca. } 138$ )



REFRAIN Cantor

7 § REFRAIN All



VERSES 1-4



© 1997, James Walsh. Published by OCP, 5536 NE Hassalo, Portland, OR 97213. All rights reserved.

## Assembly Edition

### THE PILGRIMS' ALLELUIA

James Walsh

REFRAIN (Cantor, then All)

Al - le - lu - ia, al - le - lu - ia,

al - le - lu - ia, al - le - lu - ia.

#### VERSES

1. Strong is your love. Mighty your word.  
Speak to us now, open our hearts, Alleluia.
2. Spirit of God, come to our hearts.  
Message of truth, here among us, Alleluia.
3. All-holy God: Father of Light,  
Word in our midst, Spirit and life: Alleluia.
4. Mighty is God, Holy his name.  
Be here with us, teach us your way, Alleluia.

© 1997, James Walsh. Published by OCP, 5536 NE Hassalo, Portland, OR 97213. All rights reserved.

For reprint permissions, please visit [OneLicense.net](http://OneLicense.net) or contact us at 1-800-663-1501.