

May the Angels Be Your Guide

In loving memory of our grandmothers, Virginia Dawson and Eva Madden

Based on Song of Farewell
and Psalm 27:4, 7, 9, 13-14

Michele MacAller
and Kathy McGrath

INTRO *Adagio* (♩ = ca. 72)

Keyboard

mp legato

REFRAIN

Descant I *mp*

Descant II Al - le - lu -

Soprano/Melody *mp-f*

Alto

May the an - gels be your guide, may they lead you in - to par - a -

Tenor *mp-f*

Bass *mp-f*

©1998, Michele MacAller and Kathy McGrath. Published by OCP Publications. All rights reserved.

Parts for flute and violin are available from the publisher, edition 70175.

- ia. Al - le - lu -
- dise, _____ and take you home _____ to the new Je - ru - sa -

1-5 <i>div.</i>	1, 5: <i>D.S.</i> 2-4: to Verses	Final <i>div.</i>	<i>Fine</i>
1-5	1, 5: <i>D.S.</i> 2-4: to Verses	Final	<i>Fine</i>
1-5	1, 5: <i>D.S.</i> 2-4: to Verses	Final	<i>Fine</i>

ia. ia. _____
lem. lem. _____

VERSES 1, 2

Melody *mf*

Harmony

1. There is one thing I ask of God; ___ for this I
 2. When I cry out, ___ hear my voice. ___ Have mer - cy,

mf

1. long, for this I hope: 7 to dwell in the house of
 2. Lord, and an - swer me. Do not cast me a - way in

div. *D.S.*

1. God ev - ry day of my life. ___
 2. an - ger, for ___ you are my help. ___

D.S.

VERSE 3

f

S
A
3. I shall see God's good - ness, for - ev - er

T
B
f

f

mp

3. dwell with the liv - ing. Hope in God, and take

mp

mp

cresc. *div.* *D.S. al fine*

3. heart; place your trust in the Lord.

cresc. *D.S. al fine*

cresc.

May the Angels Be Your Guide

In loving memory of our grandmothers, Virginia Dawson and Eva Madden
(Guitar/Vocal)

Based on Song of Farewell
and Psalm 27:4, 7, 9, 13-14

Michele MacAller
and Kathy McGrath

INTRO *Adagio* (♩ = ca. 72)

Capo 1: (F) G \flat (Dm/G) E \flat m/A \flat (G) A \flat (C) D \flat (F/G) G \flat /A \flat (G) A \flat

REFRAIN

(F/G) G \flat /A \flat (C) D \flat (G/B) A \flat /C (Am) B \flat m (C/G) D \flat /A \flat

mp-f

May the an - gels be your guide, may they lead you in - to par - a - dise, and

(F) G \flat (Dm/G) E \flat m/A \flat (G) A \flat (C) D \flat (F/G) G \flat /A \flat (G) A \flat

take you home to the new Je - ru - sa - lem.

Final (C) D \flat (G/B) A \flat /C

Fine

1-5 1, 5: D.S. 2-4: to Verses

lem.

mf 1. There is one thing I ask of God; for this I
mf 2. When I cry out, hear my voice. Have mer - cy,
f 3. I shall see God's good - ness, for - ev - er

(F add9) G \flat add9 (C/E) D \flat /F (Vs. 3: *mp*) (Dm) E \flat m

1. long, for this I hope: to dwell in the house of
2. Lord, and an - swer me. Do not cast me a - way in
3. dwell with the liv - ing. Hope in God, and take

(C/E) D \flat /F (Dm7) E \flat m7 (Vs. 3: *cresc.*) (C/F) D \flat /G \flat (G) A \flat D.S.

1. God ev - 'ry day of my life.
2. an - ger, for you are my help.
3. heart; place your trust in the Lord.

Performance Notes

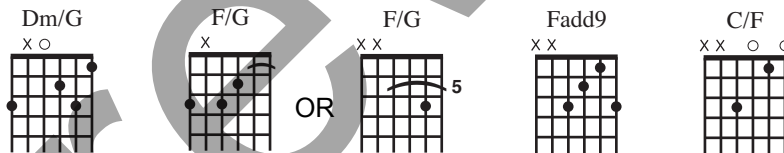
May the Angels Be Your Guide is effectively sung with progressive layering of vocal forces. A sample format could be as follows:

Refrain: solo
 Refrain: full choir unison
 Verse 1: solo
 Refrain: full choir unison
 Verse 2: SA
 Refrain: unison + Descant II
 Verse 3: SATB
 Refrain: SATB + Descant II
 Refrain: SATB + Descants I & II

Additional lengthening may be effected by adding instrumental verses and/or by repeating the refrain each time. The dynamics should be varied, with the verses generally louder than the refrain.

—M.M. & K.M.

Guitar Charts

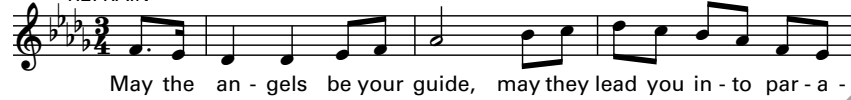


Assembly Edition

MAY THE ANGELS BE YOUR GUIDE

Michele MacAller
and Kathy McGrath

REFRAIN



VERSES



Based on Song of Farewell and Psalm 27:4, 7, 9, 13-14.

© 1998, Michele MacAller and Kathy McGrath.

Published by OCP Publications, 5536 NE Hassalo, Portland, OR 97213. All rights reserved.

For reprint permissions, please visit OneLicense.net or contact us at 1-800-663-1501.