

30106526
30109673 (PDF)

Hymn of Praise (Te Deum)
SAB Choir, Descant, Keyboard,
Guitar, Assembly

Dan Schutte



CHORAL SERIES

Hymn of Praise
(Te Deum)

Dan Schutte

Preview

FROM THE COLLECTION

To Praise You

Choral Songbook #30106509

CD #30107367



Hymn of Praise

(Te Deum)

Inspired by *Te Deum*,
4th century Latin hymn

Dan Schutte
Based on chant *Regina Caeli*

INTRO *With rubato throughout* ($\text{♩} = \text{ca. } 69$)

Chords: Dm Gm7/B \flat A/C \sharp Dm add9 Dm C C7sus4 C B \flat /D

Keyboard

Descant

Soprano

Alto

Baritone

4. To you, O God: al - le -

1. To you, O God, our Fa - ther: al - le - lu -
 2. To you, O Christ, our Broth - er: al - le - lu -
 3. To you, O Breath of Heav - en: al - le - lu -
 4. To you, O God, be glo - ry: al - le - lu -

Chords: F C7 F add9 F B \flat A/C \sharp

© 2010, Daniel L. Schutte. Published by OCP, 5536 NE Hassalo, Portland, OR 97213. All rights reserved.

Parts for Horn in F (30108874), Violin I & II (30108872), and Cello (30108873) are available online. Visit ocp.org.

4. lu - ia! To you, Dance of Trin - i - ty:

1. ia! To you, the Sing - er of cre - a - tion's song: _____
 2. ia! To you, the Sto - ry of the Fa - ther's love: _____
 3. ia! To you, the Spir - it of un - end - ing grace: _____
 4. ia! To you, e - ter - nal dance of Trin - i - ty: _____

Dmadd9 Dm Am Bb C Fadd9 F

4. al - le - lu - ia! With heart and

1-4. al - le - lu - ia! With heart and hand and

Gm C Fsus4 F Am

4. hand and soul and voice, to you we —

1-4. soul and voice, to you we raise — this, our hymn of end - less

B \flat C Am Dm B \flat A/C#

4. raise — al - le - lu -

Al - le - lu - ia!

1-4. praise. — Al - le - lu, le - lu - ia!

Dm add9 Dm C C7sus4 C B \flat /D F

B \flat F/A Csus4 C 1: D.S.
3: D.S. *al fine*

Hymn of Praise (Te Deum)

2

ia!

2

F Bbadd9 C Am7 Dm add9 Dm

Gm F/A Csus4 C D.S.

Final

ia!

Final

ia!

Final

F

Hymn of Praise

(Te Deum)

(Guitar/Vocal)

Inspired by *Te Deum*,
4th century Latin hymn

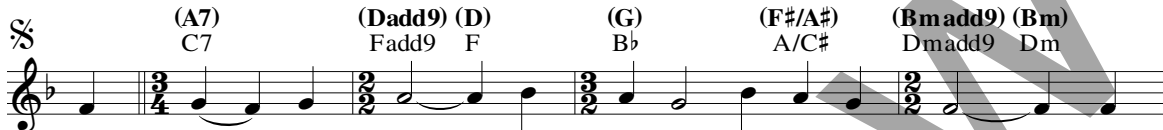
Dan Schutte
Based on chant *Regina Caeli*

INTRO With rubato throughout (♩ = ca. 69)

Capo 3: (Bm) (Em7/G) (F#m/A#) (Bmadd9)(Bm) (A) (A7sus4)(A) (G/B) (D)
Dm Gm7/Bb A/C# Dmadd9 Dm C C7sus4 C Bb/D F



(Kbd)



1. To you, O God, our Fa-ther: al-le-lu-ia! To
2. To you, O Christ, our Broth-er: al-le-lu-ia! To
3. To you, O Breath of Heav-en: al-le-lu-ia! To
4. To you, O God, be glo-ry: al-le-lu-ia! To

(F#m) (G) (A) (Dadd9) (D) (Em) (A)
Am Bb C Fadd9 F Gm C



1. you, the Sing-er of cre-a-tion's song: }
2. you, the Sto-ry of the Fa-ther's love: } al-le-lu-
3. you, the Spir-it of un-end-ing grace: }
4. you, e-ter-nal dance of Trin-i-ty: }

(Dsus4) (D) (F#m) (G) (A) (F#m)
Fsus4 F Am Bb C Am



1-4. ia! With heart and hand and soul and voice, to you we raise

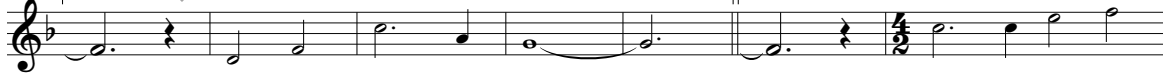
(Bm) (G) (F#m/A#) (Bmadd9) (Bm) (A) (A7sus4) (A) (G/B)
Dm Bb A/C# Dmadd9 Dm C C7sus4 C Bb/D



1-4. this, our hymn of end-less praise. Al-le-lu-ia!

1, 3 1: D.S.
3: D.S. *al fine* 2

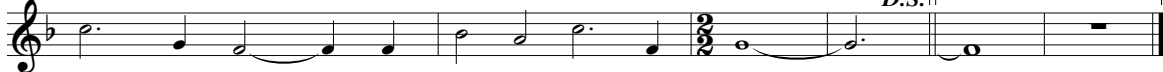
(D) (G) (D/F#) (Asus4) (A) (D) (Gadd9) (A)
F Bb F/A Csus4 C F Bbadd9 C



1, 3. ____

2. ____

(F#m7) (Bmadd9) (Bm) (Em) (D/F#) (Asus4) (A) Final
Am7 Dmadd9 Dm Gm F/A Csus4 C D.S. (D)
F



4. ____

Composer Notes

The musical inspiration for this hymn comes from the ancient Latin plainsong “*Regina Caeli*” (“Queen of Heaven”). It is one of four Marian hymns prescribed to be sung in the Liturgy of the Hours at compline at the end of each day. The hymn as we know it today dates back to the twelfth century; legend holds that St. Gregory the Great (c. 540-604) heard angels singing this one Easter morning. It is truly one of the most beautiful of the chant melodies.

The source and inspiration for the text comes from the hymn “*Te Deum*,” the traditional piece sung at the conclusion of the Divine Office as well as at liturgies of ordination, religious profession of vows, and installation of bishops. It is a grand and majestic hymn of praise to God, fashioned in the form of a doxology to Father, Son, and Holy Spirit.

It may be more helpful for singers to learn the timing and meter of this piece by ear rather than trying to figure out the multiple time signatures. This is a chant melody and cannot easily be placed into Western metered notation. Once people have a feel for the phrasing and movement of the chant, they will have no problem singing it correctly.

This is a good hymn for alternating vocal timbres on the different verses. For example, everyone sings the first verse. Then the men alone sing verse two. Verse three is then sung by only the women. Then all join together again on the final verse with the choir adding harmonies.

—Dan Schutte

Preview

Assembly Edition

HYMN OF PRAISE (*Te Deum*)

Dan Schutte
Based on chant *Regina Caeli*



1. To you, O God, our Fa-ther: al-le-lu-ia! To
 2. To you, O Christ, our Broth-er: al-le-lu-ia! To
 3. To you, O Breath of Heav-en: al-le-lu-ia! To
 4. To you, O God, be glo-ry: al-le-lu-ia! To



1. you, the Sing-er of cre-a-tion's song:
 2. you, the Sto-ry of the Fa-ther's love:
 3. you, the Spir-it of un-end-ing grace: } al-le-lu-ia!
 4. you, e-ter-nal dance of Trin-i-ty:



1-4. With heart and hand and soul and voice, to you we raise



1-4. this, our hymn of end-less praise. Al-le-lu-ia!

Text inspired by *Te Deum*, 4th century Latin hymn. Text and music © 2010, Daniel L. Schutte.
 Published by OCP, 5536 NE Hassalo, Portland, OR 97213. All rights reserved.

For reprint permissions, please visit OneLicense.net or contact us at 1-800-663-1501.

