

Choral Series

in memory of John Woodcock

In Every Age

Assembly, Cantor, SATB Choir, Keyboard, and Guitar

Based on Psalm 90:1-4, 12

Janèt Sullivan Whitaker

INTRO (♩ = ca. 86)

p
(*Solo Instrument)

Keyboard

Gm Ebmaj7 F Gm Eb F#sus2 F

mp

Bbsus4 Bb F Eb F/Eb

mp

Ebsus#4 Eb F Gm

© 1998, 2000, Janèt Sullivan Whitaker. Published by OCP. All rights reserved.

*A solo instrument part in C or B \flat is available from the publisher, edition 70215.

MUSIC · WORSHIP · SERVICE

1.800.548.8749

ocp.org



♩ VERSES

1. Long be - fore the moun - tains came to be and the land and

2. Des - ti - ny is cast, and at your si - lent word we re - turn to

3. Teach us to make use of the time we have. Teach us to be

Cm F B♭

1. sea and stars of the night, through the end - less sea - sons of all time,

2. dust and scat - ter to the wind. A thou - sand years are like a sin - gle mo - ment gone,

3. pa - tient e - ven as we wait. Teach us to em - brace our ev - 'ry joy and pain.

Cm F Gm Cm F B♭

poco rit.

1. you have al - ways been, _____ you will al - ways be.

poco rit.

2. as the light that fades _____ at the end of day.

poco rit.

3. To sleep peace - ful - ly, _____ and to rise up strong.

Absus2,#4 A \flat E \flat /F F

REFRAIN

Melody *mf* *a tempo*

In ev - 'ry age, O God, you have been our ref - uge.

Soprano *a tempo* *mf*

Alto 1, 2. Oo
3. Ah

Tenor

Bass *a tempo* *mf*

E \flat F B \flat

mf In ev - 'ry age, O God, you have been our hope. **1, 2**

1, 2. —
3. —

Oo
Ah

mf **1, 2**
Gm

Detailed description: This system contains the first vocal line and piano accompaniment. The vocal line starts with a mezzo-forte (*mf*) dynamic and includes the lyrics 'In ev - 'ry age, O God, you have been our hope.' There are two endings for the vocal line, both marked '1, 2'. The piano accompaniment features a melodic line in the right hand and a more rhythmic line in the left hand. A large watermark 'PREVIEW' is overlaid on the score.

D.S. **Final**
hope. In ev - 'ry age, O

D.S. **Final**
(ah) In ev - 'ry age, O

D.S. **Final**
Gm Gm7/F Eb

Detailed description: This system contains the second vocal line and piano accompaniment. It begins with a *D.S.* (Da Capo) instruction and a **Final** marking. The vocal line includes the lyrics 'hope. In ev - 'ry age, O' and '(ah) In ev - 'ry age, O'. The piano accompaniment continues with chords Gm, Gm7/F, and Eb. A large watermark 'PREVIEW' is overlaid on the score.

God, you have been our ref - uge. In ev - 'ry age, O

God, you have been our ref - uge, O God. In ev - 'ry ay

F B♭ E♭

This system contains the first three staves of music. The top staff is a vocal line with lyrics. The middle two staves are piano accompaniment. The piano part includes a treble clef staff with chords and a bass clef staff with a melodic line. Chord symbols F, B♭, and E♭ are placed above the treble staff.

God, you have been our hope, you have been our

ah

F E♭ F/E♭

This system contains the next three staves of music. The top staff is a vocal line with lyrics. The middle two staves are piano accompaniment. The piano part includes a treble clef staff with chords and a bass clef staff with a melodic line. Chord symbols F, E♭, and F/E♭ are placed above the treble staff.

(Solo Instrument) *rit.* *a tempo*

p *a tempo*

ref - uge, you have been our hope.

Ebsus#4 *Eb* *F* *Gm* *Ebmaj7*

rit. *a tempo*

F *Gm* *Eb* *Fsus2* *F* *Bbsus4* *Bb*

p *mp*

F *Eb* *F/Eb*

rit. *pp*

Ebsus#4 *Eb* *F* *Gm* *pp*

In Every Age

Performance Notes

The solo instrument introduction and ending for this piece are both very important to the character of the whole piece. The instrument featured on the recording is a tenor recorder, though the line is also well-suited for the clarinet or flute. It is best to have the verses sung by a solo voice, and the refrain by all, with the choir singing the choral backdrop, as written.

The refrain for this song came to me the night after I was asked to sing at the memorial service for John Woodcock, my husband's friend since childhood. By the following afternoon the piece was completely finished, just in time for John's memorial service where it was sung for the first time.

—Janet Sullivan Whitaker

Guitar Chord Charts



In Every Age

in memory of John Woodcock

(Guitar/Vocal)

Based on Psalm 90:1-4, 12

Janèt Sullivan Whitaker

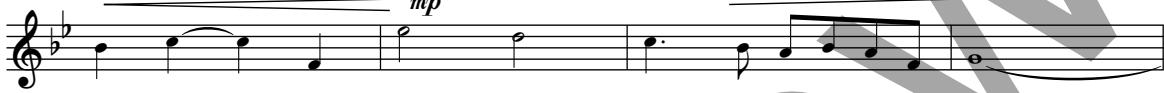
INTRO (♩ = ca. 86)

Capo 3: (Em) (Cmaj7) (D) (Em) (C)
Gm Ebmaj7 F Gm Eb



(*Solo Instrument)

(Dsus2) (D) (Gsus4) (G) (D) (C)
Fsus2 F Bbsus4 Bb F Eb



(D/C) (Csus#4) (C) (D) (Em) (Em)
F/Eb Ebsus#4 Eb F Gm Gm (let ring)



VERSE

(Am) (D) (G)
Cm F Bb



1. Long be - fore the moun - tains came to be and the land and



2. Des - ti - ny is cast, and at your si - lent word we re - turn to



3. Teach us to make use of the time we have. Teach us to be

(Am) (D) (Em) (Am) (D) (G)
Cm F Gm Cm F Bb



1. sea and stars of the night, through the end - less sea - sons of all time,



2. dust and scat - ter to the wind. A thou - sand years are like a sin - gle mo - ment gone,



3. pa - tient e - ven as we wait. Teach us to em - brace our ev - 'ry joy and pain.

(Fsus2,#4)
A \flat sus2,#4

(F)
A \flat

(C/D)
E \flat /F

(D)
F

poco rit.

1. you have al - ways been, _____ you will al - ways be.

poco rit.

2. as the light that fades _____ at the end of day.

poco rit.

3. To sleep peace - ful - ly, _____ and to rise up strong.

REFRAIN

(D) (C) (D) (G)
F (let ring) E \flat F B \flat

Melody *mf* *a tempo*

In ev - 'ry age, O God, you have been our ref - uge.

Soprano *a tempo mf*

Alto

1, 2. Oo _____
3. Ah _____

Tenor

Bass *a tempo mf*

mf (C) (D) 1, 2 (Em) (Em)
E \flat F Gm Gm (let ring) *D.S.*

In ev - 'ry age, O God, you have been our hope.

1, 2 _____ *D.S.*
3. _____

1, 2. Oo _____
3. Ah _____

Final
(Em)
 Gm

(Em7/D)
 Gm7/F

(C)
 Eb

(D)
 F

hope. In ev - 'ry age, O God, you have been our

Final

3. (ah) _____ In ev - 'ry age, _____ O God, you have been our

(G)
 Bb

(C)
 Eb

ref - uge. In ev - 'ry age, O

ref - uge, O God. In ev - 'ry ay

(D)
 F

(D)
 F (let ring)

(C)
 Eb

God, _____ you have been our hope, _____

ah _____

(Solo Instrument) *a tempo*

p

(D/C) (Csus#4) (C) (D) (Em) (Cmaj7)
 F/E \flat E \flat sus#4 E \flat F Gm E \flat maj7

rit. *a tempo*

— you have been our ref - uge, — you have been our hope. —

(D) (Em) (C) (Dsus2) (D)
 F Gm E \flat Fsus2 F

(Gsus4) (G) (D) (C) (D/C)
 B \flat sus4 B \flat F E \flat F/E \flat

mp

(Csus#4) (C) (D) (Em)
 E \flat sus#4 E \flat F Gm

rit. *pp*

Assembly Edition

IN EVERY AGE (Continued)

VERSE 2

2. Des-ti - ny is cast, and at your si - lent word we re - turn to
 2. dust and scat - ter to the wind. A thou - sand years are like a sin - gle mo - ment
 2. gone, as the light that fades _____ at the end of day.

to Refrain

VERSE 3

3. Teach us to make use of the time we have. Teach us to be
 3. pa - tient e - ven as we wait. Teach us to em - brace our ev - 'ry joy and
 3. pain. To sleep peace - ful - ly, _____ and to rise up strong.

to Refrain

IN EVERY AGE

Janet Sullivan Whitaker

VERSE 1

1. Long be - fore the moun - tains came to be and the land and
 1. sea and stars of the night, through the end - less sea - sons of all
 1. time you have al - ways been, _____ you will al - ways be.

REFRAIN

In ev - 'ry age, O God, you have been our ref - uge.
 In ev - 'ry age, O God, you have been our hope.
 God, _____ you have been our hope, _____
 you have been our ref - uge, _____ you have been our hope.

Fine

to Verses 2,3
last time: to Refrain

Final

Text based on Psalm 90:1-4, 12. Text and music © 1999, Janet Sullivan Whitaker.
 Published by OCP Publications, 5536 NE Hassalo, Portland, OR 97213. All rights reserved.

For reprint permissions, please visit OneLicense.net or contact us at 1-800-663-1501.