

Your Words, Lord, Are Spirit and Life

REFRAIN: (♩ = 80 - 84) 1st time: Cantor/All; thereafter: All

Capo 3: (D) F (A/C#) C/E (Bsus4) (Bm) Dsus4 Dm (Gmaj7) Bbmaj7

Melody
 (Cantor) Your — words, Lord, are Spir - it, Spir - it and

Keyboard

(Bm) Dm (All) (Bm) Dm (D) F (A/C#) C/E (Bsus4) Dsus4 (Bm) Dm

life. Your — words, Lord, are Spir - it,

(Gmaj7) Bbmaj7 (Dsus4) Fsus4 (D) F (Dsus4) Fsus4 (D) F *Fine*

Spir - it and life. (4. They) *Fine*

Text: John 6:63c; Psalm 19:8, 9, 10, 11, 15. Refrain © 1969, 1981, 1997, ICEL. All rights reserved. Used with permission. Verses © 1970, 1997, 1998, CCD. All rights reserved. Used with permission. Music: Bob Hurd, b. 1950; keyboard acc. by Rick Modlin, b. 1966, © 1999, Bob Hurd. Published by OCP. All rights reserved.

30102593

Edition #30102593

VERSE 1

(Gmaj7/B)
Bbmaj7/D

(A/C#)
C/E

(D)
F

(Dmaj7/F#)
Fmaj7/A

(G) (D)
Bb F



1. The law of the LORD is per - fect, re - fresh - ing the

VERSE 2

(Gmaj7/B)
Bbmaj7/D

(A/C#)
C/E

(D)
F

(Dmaj7/F#)
Fmaj7/A

(G) (D)
Bb F



2. The pre - cepts of the LORD are right, re - joic - ing the

VERSE 3

(Gmaj7/B)
Bbmaj7/D

(A/C#)
C/E

(D)
F

(Dmaj7/F#)
Fmaj7/A

(G) (D)
Bb F



3. The fear of the LORD is pure, en - dur - ing for -

VERSE 4

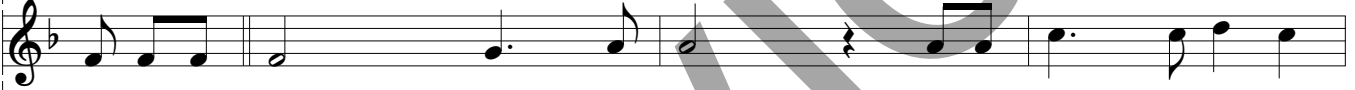
(Gmaj7/B)
Bbmaj7/D

(A/C#)
C/E

(D)
F

(Dmaj7/F#)
Fmaj7/A

(G) (D)
Bb F



4. They are more pre - cious than gold, than a heap of pur - est

VERSE 5

(Gmaj7/B)
Bbmaj7/D

(A/C#)
C/E

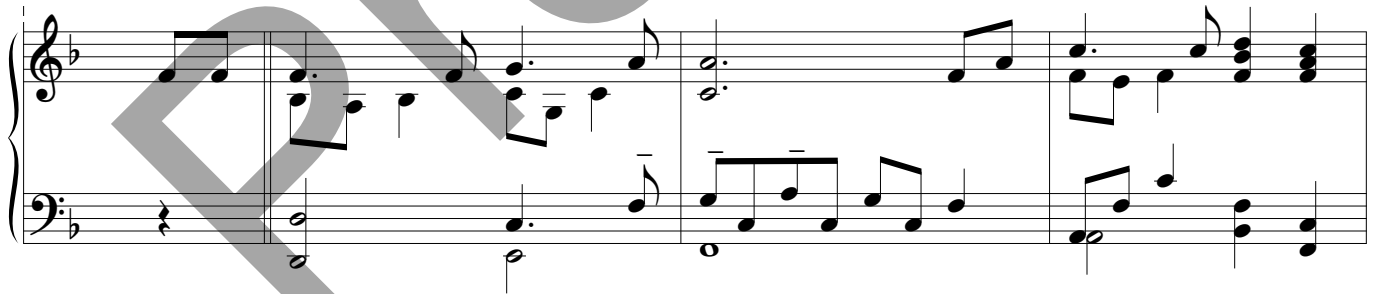
(D)
F

(Dmaj7/F#)
Fmaj7/A

(G) (D)
Bb F



5. Let the words of my mouth and the thought of my



(A) C (Em) Gm (F#7) A/C# A7 (Bm) Dm (Em/G) Gm/Bb

1. soul. The de - cree of the LORD is trust - wor - thy, giv - ing

(A) C (Em) Gm (F#7) A/C# A7 (Bm) Dm (Em/G) Gm/Bb

2. heart; the com - mand of the LORD is clear,

(A) C (Em) Gm (F#7) A/C# A7 (Bm) Dm (Em/G) Gm/Bb

3. ev - er; the stat - utes of the LORD are true,

(A) C (Em) Gm (F#7) A/C# A7 (Bm) Dm (Em/G) Gm/Bb

4. gold; sweet - er al - so than syr - up or

(A) C (Em) Gm (F#7) A/C# A7 (Bm) Dm (Em/G) Gm/Bb

5. heart find fa - vor be - fore you, O LORD, my

(D/A) F/C (Asus4) Csus4 (A) C (Asus4) Csus4 (A) C *D.C.*

1. wis - dom _____ to the sim - ple. _____

(D/A) F/C (Asus4) Csus4 (A) C (Asus4) Csus4 (A) C *D.C.*

2. en - light - 'ning the eye. _____

(D/A) F/C (Asus4) Csus4 (A) C (Asus4) Csus4 (A) C *D.C.*

3. all of them just. _____

(D/A) F/C (Asus4) Csus4 (A) C (Asus4) Csus4 (A) C *D.C.*

4. hon - ey _____ from the comb. _____

(D/A) F/C (Asus4) Csus4 (A) C (Asus4) Csus4 (A) C *D.C. al fine*

5. rock and my re - deem - er. _____

D.C.

The piano accompaniment consists of two staves. The right hand plays a series of chords: D/A, F/C, (Asus4) Csus4, (A) C, (Asus4) Csus4, (A) C, and (Asus4) Csus4. The left hand plays a bass line with chords: F/C, (Asus4) Csus4, (A) C, (Asus4) Csus4, (A) C, and (Asus4) Csus4. The score includes a large 'Preview' watermark.