

Lord, Every Nation

(Psalm 72)

Based on Psalm 72:1-2, 7-8, 10-13

Jesse Manibusan

INTRO (♩ = ca. 110)

Capo 2: (Em) (C) (G) (D) (Em) (C) (D) (Em) (C) (G) (D)
 F#m D A E F#m D E F#m D A E

REFRAIN

(Em) (C) (D) // NC (Em) (C) (G) (D)
 F#m D E F#m D A E

Lord, ev - 'ry na - tion on earth will a-dore

(Em) (C) (D) (Em) (C) (G) (D)
 F#m D E F#m D A E

— you, — O God. — Lord, ev - 'ry na - tion — on earth —

(G) (D) (D) (D) Final
 A E E E

1,6 2-5
 (D) (D)
 E E

D.S. to Verses

— will a - dore — you. — you. — you.

(Em) (C) (G) (D) (Em) (C) (D)
 F#m D A E F#m D E

Fine

VERSE 1, 4

(D) (Cmaj7) (D)
 E Dmaj7 E

1. En - dow our lead - ers, O God, — with your judg - ment. And with your
 4. For you shall res - cue the poor — when they cry — out, and the af -

(Em) (Bm7) (Cmaj7)
 F#m C#m7 Dmaj7

1. jus - tice on ev - 'ry - one. — For you gov - ern your peo -
 4. flic - ted when help — can't be found. — You shall raise up the low -

Refrain text © 1969, 1981, ICEL. All rights reserved. Used with permission. Music and verses text © 1998, 1999, Jesse Manibusan. Published by OCP. All rights reserved.

(G/B)
A/C#

(F)
G

(C/D)
D/E



1. - ple with jus - tice, ___ and your af - flic - ted ones with righ - teous - ness. ___
4. - ly ___ and ___ the poor, and those on high ___ shall be cast ___ down. ___

VERSE 2

(D)
E

(Cmaj7)
Dmaj7

(D)
E

(Em)
F#m



2. Jus - tice shall flow - er in your ___ days, and peace till the moon -

(Bm7)
C#m7

(Cmaj7)
Dmaj7



2. ___ be no more. ___ May your king - dom reach from sea -

(G/B)
A/C#

(F)
G

(C/D)
D/E



2. ___ to sea, ___ and from the riv - er to the ends of the earth. ___

VERSE 3

(D)
E

(Cmaj7)
Dmaj7

(D)
E

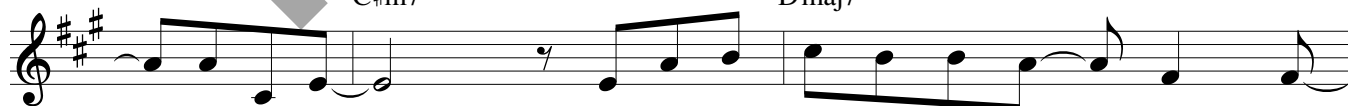
(Em)
F#m



3. Tar - shish and the Isles shall bring ___ trib - ute, gifts from Se - ba and A -

(Bm7)
C#m7

(Cmaj7)
Dmaj7



3. - ra - bi - a. ___ All oth - er pow - ers shall pay ___ their hom -

(G/B)
A/C#

(F)
G

(C/D)
D/E



3. - age, and ev - 'ry na - tion shall serve ___ the Lord. ___