

My Soul Is Thirsting/As Morning Breaks

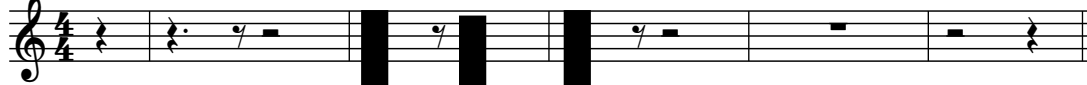
Psalm 63

Psalm 63:2-9

Steve Angrisano

INTRO Gently (♩ = ca. 112)

Capo 5: (G/B) (C) (D/F#) (G) (G/B) (C) (Dsus4) (D)
C/E F G/B C C/E F Gsus4 G



REFRAIN

(G/B) (C) (D) (Am7) (C)
C/E F G/B C Dm7 F



My soul is thirst - ing for you, O Lord thirst - ing for you, my God.
As morn - ing breaks I look to you; be my strength this day.



My soul is thirst - ing; my
I look to you; I

(Dsus4) (D) (G/B) (C) (D/F#) (Em)
Gsus4 G C/E F G/B Am



My soul is thirst - ing for you, O Lord, thirst -
As morn - ing breaks I look to you; be



soul is thirst - ing for you. My soul is thirst - ing,
look to you, O Lord. I look to you,

(Am7) (G/B) (C) (Am7) (D)
Dm7 C/E F Dm7 G



- ing for you, my God, thirst - ing for you, my God.
my strength this day, be my strength this day.



my God.
O Lord.

The English translation of the refrain text from *Lectionary for Mass* © 1969, 1981, International Committee on English in the Liturgy, Inc. (ICEL).
The English translation of the alternative refrain text from *The Liturgy of the Hours* © 1974, ICEL. All rights reserved. Used with permission.
Music and verses text © 1997, 1998, Steve Angrisano. Published by OCP Publications. All rights reserved.

1 (Gsus4) Csus4	(G) C	2-4 (Gsus4) Csus4	(G) C	Final (Gsus4) Csus4	(G) C
-----------------------	----------	-------------------------	----------	---------------------------	----------

D.S. *to Verses/Interlude* *rit.* *Fine*

VERSES 1,2

(D/F#) (Em) (G) (F)
G/B Am C Bb

1. O God, you are my God, and I will al -
2. Through the day you walk with me; all the night your love -

(C) (Em) (D)
F Am G

1. - ways praise you. In the shad - ow of your wings -
2. sur - rounds me. To the glo - ry of your name -

(C) (G/B) (F) (Dsus4) (D)
F C/E Bb Gsus4 G *D.S.*

1. I cling to you and you hold me high.
2. I lift my hands, and your praise.

INTERLUDE

(G) (F) (G/B) (C)
C Bb C/E F

(Keybd)

(Em) (F) (C/D) (G/D) (Am/D) (G/D) (D)
Am Bb F/G C/G Dm/G C/G G (to Verse 3)

VERSE 3

(D/F#) (Em) (D) (F) (C)
G/B Am G Bb F

3. I will nev - er be a - fraid, for I will not be a - ban - doned. E - ven

(Em) (D) (C) (G/B) (F) (Dsus4) (D)
Am G F C/E Bb Gsus4 G *D.S. al fine*

3. when the road grows long and wea - ry your love will res - cue me.