

NOW THAT THE MORNING HAS BROKEN THE DARKNESS

Majestic (♩ = ca. 72)

F C F/A C F Dm F/C C F C/E B♭/D F/A Gm/B♭ C Fsus4 F

1. Now that the morn - ing has bro - ken the dark - ness, and the ___ light has ___ filled the ___ sky,
 2. Lord of ___ all, we ___ come be - fore you, men and ___ wom - en, ___ young and ___ old,
 3. Fa - ther and Son and ___ Ho - ly ___ Spir - it, be with us all through the night and the day,

F/A C F/C C♯7 Dm F/A F/C C F C/E B♭/D Gm F/C C7 F

1. we give you thanks for ___ all you have grant - ed and sing our prais - es to God on ___ high.
 2. peo - ple of man - y ___ col - ors and na - tions, all of us seek - ing the sto - ry as told
 3. and through your love we ___ join now to - geth - er as we ___ live and ___ love and ___ pray.

Dm C C♯7 Dm Gm/B♭ F/C C F F/E B♭/D F/A Gm/B♭ G7/B Csus4 C

1. Help us, O Lord, to ___ keep your com - mand - ment to love our sis - ters and broth - ers this day.
 2. of the great day when ___ Je - sus a - mong us gave us your word of ___ life and ___ truth,
 3. And to the peo - ple who seek to di - vide us, help us through love to ___ turn from their call.

F F/A C F/A C F Dm F/C C D/C Gm B♭m6 F/C C7 Fsus4 F

1. Lord of ___ hope and ___ love and ___ free - dom, our faith in you help us nev - er de - ny.
 2. and that the love that ___ binds us to - geth - er is more ___ pre - cious than sil - ver or gold.
 3. Give us the strength to ___ al - ways be faith - ful, and to ___ al - ways ___ walk in your ways.

Text: Grayson Warren Brown, b. 1948.
 Music: Grayson Warren Brown; keyboard acc. by Rick Modlin, b. 1966.
 Text and music © 2006, 2007, Grayson Warren Brown. Published by OCP. All rights reserved.

23020-Z1
 Edition #93679

NOW THAT THE MORNING HAS BROKEN THE DARKNESS

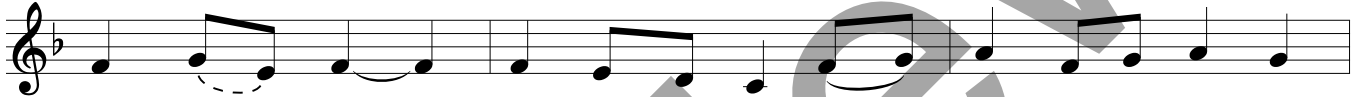
Majestic (♩ = ca. 72)

Capo 3: (D) (A) (D/F#) (A) (D) (Bm) (D/A) (A) (D) (A/C#) (G/B)
F C F/A C F Dm F/C C F C/E Bb/D



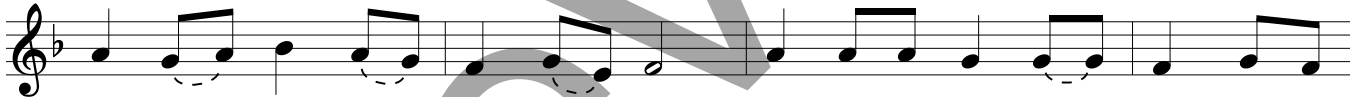
1. Now that the morn - ing has bro - ken the dark - ness, and the light has ___
2. Lord of ___ all, we ___ come be - fore you, men and ___ wom - en, ___
3. Fa - ther and Son and ___ Ho - ly ___ Spir - it, be with us all through the

(D/F#) (Em/G) (A) (Dsus4) (D) (D/F#) (A) (D/A) (A#°7) (Bm) (D/F#) (D/A) (A)
F/A Gm/Bb C Fsus4 F F/A C F/C C#°7 Dm F/A F/C C



1. filled the ___ sky, ___ we give you thanks for ___ all you have grant - ed
2. young and ___ old, ___ peo - ple of man - y ___ col - ors and na - tions,
3. night and the day, ___ and through your love we ___ join now to - geth - er

(D) (A/C#) (G/B) (Em) (D/A) (A7) (D) (Bm) (A) (A#°7) (Bm) (Em/G)
F C/E Bb/D Gm F/C C7 F Dm C C#°7 Dm Gm/Bb



1. and sing our prais - es to God on ___ high. Help us, O Lord, to ___ keep your com -
2. all of us seek - ing the sto - ry as told of the great day when ___ Je - sus a -
3. as we ___ live and ___ love and ___ pray. And to the peo - ple who seek to di -

(D/A) (A) (D) (D/C#) (G/B) (D/F#) (Em/G) (E7/G#) (Asus4) (A) (D) (D/F#)
F/C C F F/E Bb/D F/A Gm/Bb G7/B Csus4 C F F/A



1. mand - ment to love our sis - ters and broth - ers this day. ___ Lord of ___
2. mong us gave us your word of ___ life and ___ truth, ___ and that the
3. vide us, help us through love to ___ turn from their call. ___ Give us the

(A) (D/F#) (A) (D) (Bm) (D/A) (A) (B/A) (Em) (Gm6) (D/A) (A7) (Dsus4) (D)
C F/A C F Dm F/C C D/C Gm Bbm6 F/C C7 Fsus4 F



1. hope and ___ love and ___ free - dom, our faith in you help us nev - er de - ny. ___
2. love that ___ binds us to - geth - er is more ___ pre - cious than sil - ver or gold. ___
3. strength to ___ al - ways be faith - ful, and to ___ al - ways ___ walk in your ways. ___

NOW THAT THE MORNING HAS BROKEN THE DARKNESS

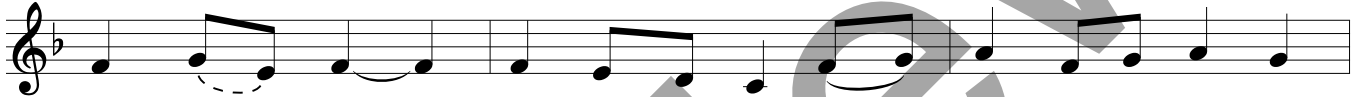
Majestic (♩ = ca. 72)

Capo 3: (D) (A) (D/F#) (A) (D) (Bm) (D/A) (A) (D) (A/C#) (G/B)
F C F/A C F Dm F/C C F C/E Bb/D



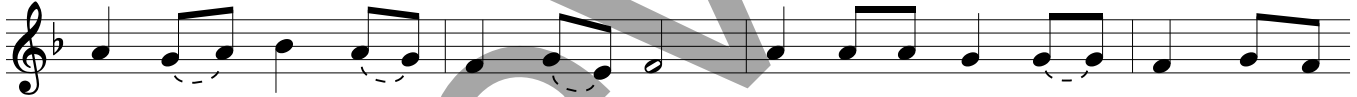
1. Now that the morn - ing has bro - ken the dark - ness, and the light has ___
2. Lord of ___ all, we ___ come be - fore you, men and ___ wom - en, ___
3. Fa - ther and Son and ___ Ho - ly ___ Spir - it, be with us all through the

(D/F#) (Em/G) (A) (Dsus4) (D) (D/F#) (A) (D/A) (A#°7) (Bm) (D/F#) (D/A) (A)
F/A Gm/Bb C Fsus4 F F/A C F/C C#°7 Dm F/A F/C C



1. filled the ___ sky, ___ we give you thanks for ___ all you have grant - ed
2. young and ___ old, ___ peo - ple of man - y ___ col - ors and na - tions,
3. night and the day, ___ and through your love we ___ join now to - geth - er

(D) (A/C#) (G/B) (Em) (D/A) (A7) (D) (Bm) (A) (A#°7) (Bm) (Em/G)
F C/E Bb/D Gm F/C C7 F Dm C C#°7 Dm Gm/Bb



1. and sing our prais - es to God on ___ high. Help us, O Lord, to ___ keep your com -
2. all of us seek - ing the sto - ry as told of the great day when ___ Je - sus a -
3. as we ___ live and ___ love and ___ pray. And to the peo - ple who seek to di -

(D/A) (A) (D) (D/C#) (G/B) (D/F#) (Em/G) (E7/G#) (Asus4) (A) (D) (D/F#)
F/C C F F/E Bb/D F/A Gm/Bb G7/B Csus4 C F F/A



1. mand - ment to love our sis - ters and broth - ers this day. ___ Lord of ___
2. mong us gave us your word of ___ life and ___ truth, ___ and that the
3. vide us, help us through love to ___ turn from their call. ___ Give us the

(A) (D/F#) (A) (D) (Bm) (D/A) (A) (B/A) (Em) (Gm6) (D/A) (A7) (Dsus4) (D)
C F/A C F Dm F/C C D/C Gm Bbm6 F/C C7 Fsus4 F



1. hope and ___ love and ___ free - dom, our faith in you help us nev - er de - ny. ___
2. love that ___ binds us to - geth - er is more ___ pre - cious than sil - ver or gold. ___
3. strength to ___ al - ways be faith - ful, and to ___ al - ways ___ walk in your ways. ___

NOW THAT THE MORNING HAS BROKEN THE DARKNESS

SOLO INSTRUMENT

VERSES 1-3 *Majestic* (♩ = ca. 72)

Musical notation for Verses 1-3 in B-flat major, 4/4 time, majestic tempo. The notation consists of three staves of music. The first staff begins with a treble clef, a key signature of one flat (B-flat), and a 4/4 time signature. The music features a melodic line with various note values including quarter, eighth, and sixteenth notes, often beamed together. Phrases are frequently connected by long, sweeping slurs. The second and third staves continue the melodic development, with the third staff ending with a double bar line.

Note: Bracketed Intro matches suggested bracketed Intro on keyboard and guitar accompaniments.

Music: Grayson Warren Brown, b. 1948; arr. by Rick Modlin, b. 1966, © 2006, 2007, Grayson Warren Brown. Published by OCP. All rights reserved.

SOLO INSTRUMENT in B♭

VERSES 1-3 *Majestic* (♩ = ca. 72)

Musical notation for Verses 1-3 in B-flat major, 4/4 time, majestic tempo. The notation consists of three staves of music. The first staff begins with a treble clef, a key signature of one flat (B-flat), and a 4/4 time signature. The music features a melodic line with various note values including quarter, eighth, and sixteenth notes, often beamed together. Phrases are frequently connected by long, sweeping slurs. The second and third staves continue the melodic development, with the third staff ending with a double bar line.

Note: Bracketed Intro matches suggested bracketed Intro on keyboard and guitar accompaniments.

Music: Grayson Warren Brown, b. 1948; arr. by Rick Modlin, b. 1966, © 2006, 2007, Grayson Warren Brown. Published by OCP. All rights reserved.