

MARANATHA! COME, LORD JESUS

REFRAIN: (♩ = ca. 80) 1st time: Cantor, All repeat; thereafter: All

Melody

Ma-ra - na - tha! Come, Lord Je - sus. Al-le - lu - ia! Al-le -

Keyboard

lu - ia! Ma-ra - na - tha! Come, Lord Je - sus. Al-le - lu - ia! A -

1, 9 C Gm D.S. 2-8 C Gm C to Verses Final C (no3)

men! Ma - ra - men! men!

1, 9 D.S. 2-8 to Verses Final

C Fm C

rit. **Fine**

Text and music: Janet Sullivan Whitaker, b. 1958, © 2002, Janet Sullivan Whitaker. Published by OCP. All rights reserved.

22966-Z1
Edition #93470

MARANATHA! COME, LORD JESUS, cont. (2)

VERSES

1. O come, Wis-dom from on high, who or - ders all things with

2. O Lord and rul - er of Is - ra - el, who gave to Mo-ses the

3. O Root of Jes - se, — come as a sign for all the

4. O Key of Da - vid, come! O Scep-ter of the house of —

5. O Dawn of the East, O Bright - ness of Light E - ter -

6. O King of Na-tions, De - sired — One, O come to make us

7. Em - man - u - el! Em - man - u - el! Come, O King, and

Chords: C, Dø7/C, C, Fm/C, C, Ab

1. might. Ma - ra - na - tha! Ma - ra -

2. law: Ma - ra - na - tha! Ma - ra -

3. peo - ple. Ma - ra - na - tha! Ma - ra -

4. Is - ra - el: Ma - ra - na - tha! Ma - ra -

5. nal: Ma - ra - na - tha! Ma - ra -

6. one. Ma - ra - na - tha! Ma - ra -

7. save us! Ma - ra - na - tha! Ma - ra -

Gm Ab Gm D.S.

Gm Ab Gm D.S.

MARANATHA! COME, LORD JESUS

REFRAIN: (♩ = ca. 80) 1st time: Cantor, All repeat; thereafter: All

Capo 3: (A) C (Dm) Fm (A) C

Ma - ra - na - tha! Come, Lord Je - sus. Al - le - lu - ia! Al - le -

(Em) Gm [(Em) Gm] (A) C (Dm) Fm (A) C

lu - ia! Ma - ra - na - tha! Come, Lord Je - sus. Al - le -

(G) Bb (Em) Gm 1, 9 (A) C (Em) Gm 2-8 (A) C (Em) Gm (A) C to Verses

lu - ia! A - men! Ma - ra - men! _____

Final (A(no3)) C(no3) (A) C (Dm) Fm (A) C rit. Fine

(Keyboard)

VERSE 1

(A) C (B ϕ 7/A) D ϕ 7/C (A) C (Dm/A) Fm/C (A) C (F) A \flat 3

1. O come, Wis - dom from on high, who or - ders all things with

(Em) Gm (F) A \flat (Em) Gm D.C.

1. might. Ma - ra - na - tha!

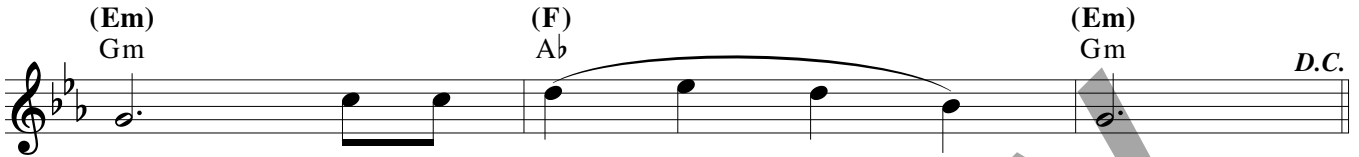
Text and music: Janèt Sullivan Whitaker, b. 1958, © 2002, Janèt Sullivan Whitaker. Published by OCP. All rights reserved.

VERSE 2

(A) (B \emptyset 7/A) (A) (Dm/A) (A) (F)
 C D \emptyset 7/C C Fm/C C A \flat



2. O Lord and rul - er of Is - ra - el, — who gave to Mo - ses the



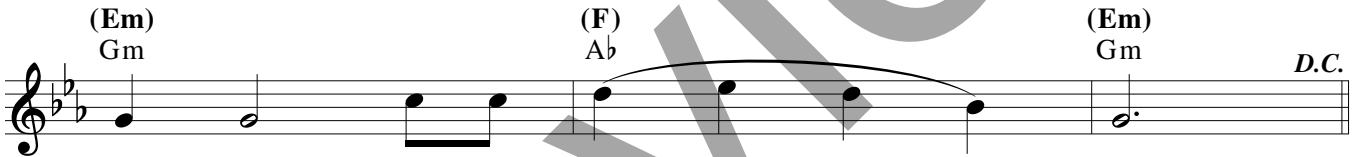
2. law: Ma - ra - na - - - - - tha!

VERSE 3

(A) (B \emptyset 7/A) (A) (Dm/A) (A) (F)
 C D \emptyset 7/C C Fm/C C A \flat



3. O Root of Jes - se, — come — as a sign for all the



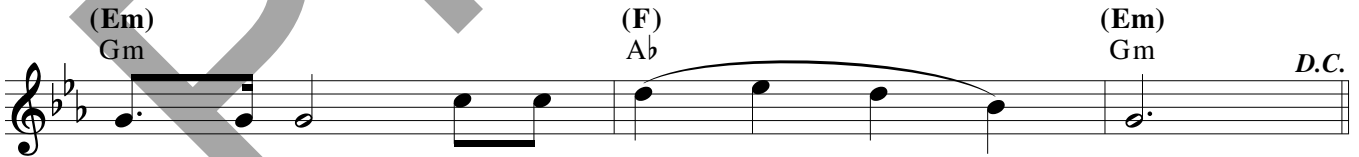
3. peo - ple. Ma - ra - na - - - - - tha!

VERSE 4

(A) (B \emptyset 7/A) (A) (Dm/A) (A) (F)
 C D \emptyset 7/C C Fm/C C A \flat



4. O Key of Da - vid, come! — O Scep - ter of the house of —



4. Is - ra - el: Ma - ra - na - - - - - tha!

VERSE 5

(A) (B \emptyset 7/A) (A) (Dm/A) (A) (F)
 C D \emptyset 7/C C Fm/C C Ab

5. O Dawn of the East, O Bright - ness of Light E - ter -

(Em) (F) (Em)
 Gm Ab Gm *D.C.*

5. nal: Ma - ra - na - - - - - tha!

VERSE 6

(A) (B \emptyset 7/A) (A) (Dm/A) (A) (F)
 C D \emptyset 7/C C Fm/C C Ab

6. O King of Na-tions, De - sired One, O come to make us

(Em) (F) (Em)
 Gm Ab Gm *D.C.*

6. one. Ma - ra - na - - - - - tha!

VERSE 7

(A) (B \emptyset 7/A) (A) (Dm/A) (A) (F)
 C D \emptyset 7/C C Fm/C C Ab

7. Em - man - u - el! Em - man - u - el! Come, O King, and

(Em) (F) (Em)
 Gm Ab Gm *D.C.*

7. save us! Ma - ra - na - - - - - tha!

MARANATHA! COME, LORD JESUS

REFRAIN: (♩ = ca. 80) 1st time: Cantor, All repeat; thereafter: All

Capo 3: (A) C (Dm) Fm (A) C

Ma - ra - na - tha! Come, Lord Je - sus. Al - le - lu - ia! Al - le -

(Em) Gm [(Em) Gm] (A) C (Dm) Fm (A) C

lu - ia! Ma - ra - na - tha! Come, Lord Je - sus. Al - le -

(G) Bb (Em) Gm 1, 9 (A) C (Em) Gm 2-8 (A) C (Em) Gm (A) C to Verses

lu - ia! A - men! Ma - ra - men! _____

Final (A(no3)) C(no3) (A) C (Dm) Fm (A) C rit. Fine

(Keyboard)

VERSE 1

(A) C (B ϕ 7/A) D ϕ 7/C (A) C (Dm/A) Fm/C (A) C (F) A \flat 3

1. O come, Wis - dom from on high, who or - ders all things with

(Em) Gm (F) A \flat (Em) Gm D.C.

1. might. Ma - ra - na - tha!

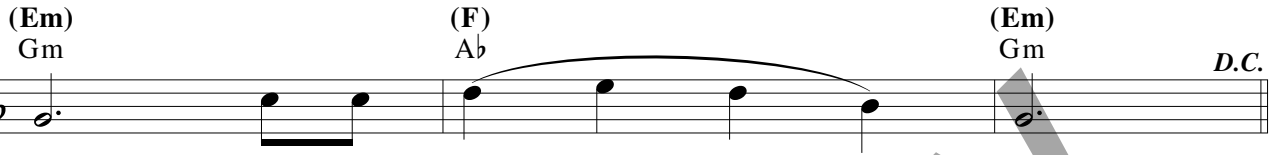
Text and music: Janèt Sullivan Whitaker, b. 1958, © 2002, Janèt Sullivan Whitaker. Published by OCP. All rights reserved.

VERSE 2

(A) (B \emptyset 7/A) (A) (Dm/A) (A) (F)
 C D \emptyset 7/C C Fm/C C A \flat



2. O Lord and rul - er of Is - ra - el, — who gave to Mo - ses the



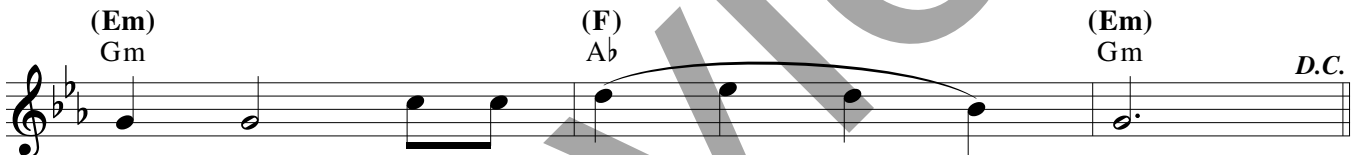
2. law: Ma - ra - na - - - - - tha!

VERSE 3

(A) (B \emptyset 7/A) (A) (Dm/A) (A) (F)
 C D \emptyset 7/C C Fm/C C A \flat



3. O Root of Jes - se, — come — as a sign for all the



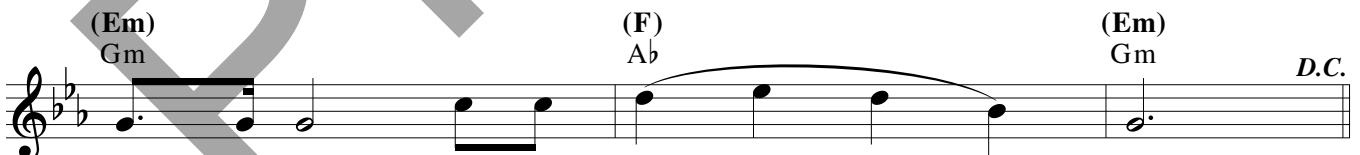
3. peo - ple. Ma - ra - na - - - - - tha!

VERSE 4

(A) (B \emptyset 7/A) (A) (Dm/A) (A) (F)
 C D \emptyset 7/C C Fm/C C A \flat




4. O Key of Da - vid, come! — O Scep - ter of the house of —



4. Is - ra - el: Ma - ra - na - - - - - tha!


VERSE 5

(A) (B \emptyset 7/A) (A) (Dm/A) (A) (F)
C D \emptyset 7/C C Fm/C C Ab



5. O Dawn of the East, O Bright - ness of Light E - ter -


(Em) (F) (Em)
Gm Ab Gm *D.C.*



5. nal: Ma - ra - na - - - - - tha!

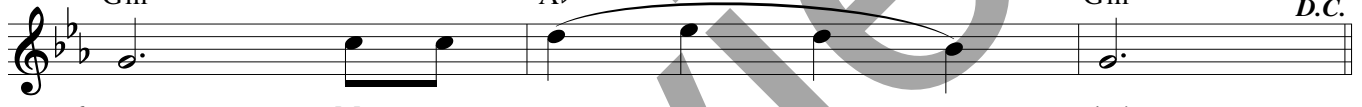
VERSE 6

(A) (B \emptyset 7/A) (A) (Dm/A) (A) (F)
C D \emptyset 7/C C Fm/C C Ab



6. O King of Na-tions, De - sired One, O come to make us


(Em) (F) (Em)
Gm Ab Gm *D.C.*



6. one. Ma - ra - na - - - - - tha!


VERSE 7

(A) (B \emptyset 7/A) (A) (Dm/A) (A) (F)
C D \emptyset 7/C C Fm/C C Ab



7. Em - man - u - el! Em - man - u - el! Come, O King, and

(Em) (F) (Em)
Gm Ab Gm *D.C.*



7. save us! Ma - ra - na - - - - - tha!

MARANATHA! COME, LORD JESUS

OBOE

INTRO (♩ = ca. 80)

mf

REFRAIN

8

REFRAIN

p

VERSE 1

6

REFRAIN

p

VERSE 2

REFRAIN

VERSE 3

6

REFRAIN

mf

Note: Written Intro is compatible with suggested bracketed Intro on keyboard and guitar accompaniments.

Text and music: Janet Sullivan Whitaker, b. 1958, © 2002, Janet Sullivan Whitaker. Published by OCP, 5536 NE Hassalo, Portland, OR 97213. All rights reserved.

VERSE 4

REFRAIN

6

VERSE 5

6

REFRAIN

VERSE 6

REFRAIN

9 6

VERSE 7

REFRAIN

4 3

REFRAIN

FINAL

rit. p