

LORD, MAKE US TURN TO YOU

REFRAIN: *Moderato* (♩ = ca. 56) All

Melody

Keyboard

Chords: B♭, F/E♭, Cm/E♭, B♭/F, F, B♭/F, F

Lyrics: Lord, make us turn to you;

Chords: E♭maj7, E♭6, B♭add9/D, B°7, G7/B, Cm sus2, A♭9

Lyrics: let us see your face, let us see your face

Chords: B♭/F, Dm7, Cm9, F7

Lyrics: and we shall be saved.

1-3: B♭sus4, B♭, A°7, D7 to Verses

Final: B♭sus4, B♭ *Fine*

Chords: B♭/F, Dm7, Cm9, F7

Lyrics: and we shall be saved.

1-3: B♭sus4, B♭, A°7, D7 to Verses

Final: B♭sus4, B♭ *Fine*

rit. last time

Text: Psalm 80:2-3, 15-16, 18-19. Refrain © 1969, 1981, ICEL. All rights reserved. Used with permission. Verses © 1970, CCD. All rights reserved. Used with permission. Music: Leon C. Roberts, 1950-1999, © 1996, Leon C. Roberts. Published by OCP. All rights reserved.

VERSES: Cantor

Gm A \circ 7/G A \circ 7/G Gm F/G

1. O shep - herd of Is - ra - el, heark - en, _____ from your throne

2. Once a - gain, _____ O LORD of hosts, _____ look down from heav - en, and see;

3. May your help be with the man of your right _____ hand, with the

Gm A \circ 7/G A \circ 7/G Gm F/G

1. up - on the cher - u - bim, _____ shine forth. _____

2. take care of this vine, and pro -

3. son of man _____ whom _____ you your-self made strong.

Ebmaj7 C9/E A/C# A D D/C Gm/B \flat D7/A

Ebmaj7 C9/E A/C# A D D/C Gm/B \flat D7/A

Gm F/A Bb Ebmaj13 Ab13

1. Rouse your pow'r, and come to save us,

2. tect, pro - tect what your right hand has plant - ed, the

3. Then we will no more with - draw from you; give us new

Gm F/A Bb Ebmaj13 Ab13

1. come and save us.

2. son of man whom you your - self made strong.

3. life, and we will call up - on your name.

Ebmaj7 F/G Cm7 F13(b9) Bbsus4 Bb Cm7 Dm7 Ebmaj7 F7 D.C.

Ebmaj7 F/G Cm7 F13(b9) Bbsus4 Bb Cm7 Dm7 Ebmaj7 F7 D.C.

LORD, MAKE US TURN TO YOU

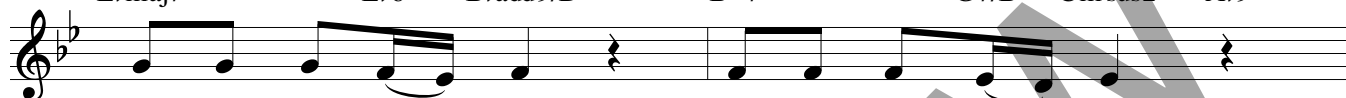
REFRAIN: *Moderato* (♩ = ca. 56) All

Capo 3: (G) B♭ (D/C) F/E♭ (Am/C) Cm/E♭ (G/D) B♭/F (D) F (G/D) B♭/F (D) F



Lord, make us turn _____ to you; _____

(Cmaj7) Ebmaj7 (C6) Eb6 (Gadd9/B) Bbadd9/D (G#°7) B°7 (E7/G#) G7/B (Am sus2) Cm sus2 (F9) Ab9



let us see your _____ face, let us see your _____ face

(G/D) B♭/F (Bm7)(Am9) Dm7 Cm9 (D7) F7

1-3

(Gsus4) Bbsus4 (G) B♭ (F#°7) A°7 (B7) D7

Final

(Gsus4) Bbsus4 (G) B♭

Fine



and we shall be saved. _____ saved. _____

VERSE 1: Cantor

(Em) Gm (F#°7/E) A°7/G (F#°7/E) A°7/G (Em) Gm (D/E) F/G



1. O shep-herd of Is - ra - el, heark - en, _____ from your throne _____

(Cmaj7) Ebmaj7 (A9/C#) C9/E (F#/A#) A/C# (F#) A (B) D (B/A) D/C (Em/G) Gm/B♭ (B7/F#) D7/A



1. up - on the cher-u-bim, _____ shine forth. _____

(Em) Gm (D/F#) F/A (G) B♭ (Cmaj13) Ebmaj13 (F13) Ab13



1. Rouse your pow'r, and come to save _____ us, _____

(Cmaj7) Ebmaj7 (D/E) F/G (Am7) Cm7 (D13(b9)) F13(b9) (Gsus4) Bbsus4 (G) B♭ (Am7) Cm7 (Bm7) Dm7 (Cmaj7) Ebmaj7 (D7) F7 *D.C.*



1. come and save _____ us. _____

Text: Psalm 80:2-3, 15-16, 18-19. Refrain © 1969, 1981, ICEL. All rights reserved. Used with permission. Verses © 1970, CCD. All rights reserved. Used with permission. Music: Leon C. Roberts, 1950-1999, © 1996, Leon C. Roberts. Published by OCP. All rights reserved.

VERSE 2: Cantor

(Em) (F#°7/E) (F#°7/E) (Em) (D/E)
 Gm A°7/G A°7/G Gm F/G

2. Once a-gain, O LORD of hosts, look down from heav-en, and see;

(Cmaj7) (A9/C#) (F#/A#) (F#) (B) (B/A) (Em/G) (B7/F#)
 Ebmaj7 C9/E A/C# A D D/C Gm/Bb D7/A

2. take care of this vine, and pro-

(Em) (D/F#) (G) (Cmaj13) (F13)
 Gm F/A Bb Ebmaj13 Ab13

2. tect, pro- tect what your right hand has plant-ed, the

(Cmaj7) (D/E) (Am7) (D13(b9)) (Gsus4) (G) (Am7) (Bm7) (Cmaj7) (D7)
 Ebmaj7 F/G Cm7 F13(b9) Bbsus4 Bb Cm7 Dm7 Ebmaj7 F7 D.C.

2. son of man whom you your-self made strong.

VERSE 3: Cantor

(Em) (F#°7/E) (F#°7/E) (Em) (D/E)
 Gm A°7/G A°7/G Gm F/G

3. May your help be with the man of your right hand, with the

(Cmaj7) (A9/C#) (F#/A#) (F#) (B) (B/A) (Em/G) (B7/F#)
 Ebmaj7 C9/E A/C# A D D/C Gm/Bb D7/A

3. son of man whom you your-self made strong.

(Em) (D/F#) (G) (Cmaj13) (F13)
 Gm F/A Bb Ebmaj13 Ab13

3. Then we will no more with-draw from you; give us new

(Cmaj7) (D/E) (Am7) (D13(b9)) (Gsus4) (G) (Am7) (Bm7) (Cmaj7) (D7)
 Ebmaj7 F/G Cm7 F13(b9) Bbsus4 Bb Cm7 Dm7 Ebmaj7 F7 D.C. al fine

3. life, and we will call up-on your name.

LORD, MAKE US TURN TO YOU

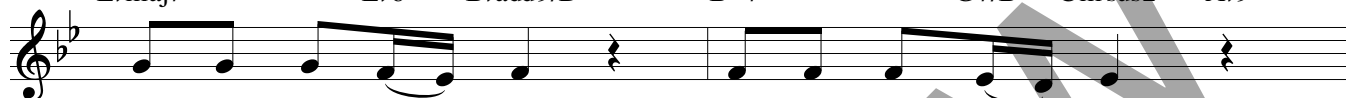
REFRAIN: *Moderato* (♩ = ca. 56) All

Capo 3: (G) (D/C) (Am/C) (G/D) (D) (G/D) (D)
B♭ F/E♭ Cm/E♭ B♭/F F B♭/F F



Lord, make us turn _____ to you; _____

(Cmaj7) (C6) (Gadd9/B) (G#°7) (E7/G#) (Am sus2) (F9)
E♭maj7 E♭6 B♭add9/D B°7 G7/B Cm sus2 A♭9



let us see your _____ face, let us see your _____ face

(G/D) (Bm7)(Am9) (D7)
B♭/F Dm7 Cm9 F7

1-3

(Gsus4) (G) (F#°7) (B7)
Bbsus4 B♭ A°7 D7

Final

(Gsus4) (G)
Bbsus4 B♭

Fine



and we shall be saved. _____ saved. _____

VERSE 1: Cantor

(Em) (F#°7/E) (F#°7/E) (Em) (D/E)
Gm A°7/G A°7/G Gm F/G



1. O shep-herd of Is - ra - el, heark - en, _____ from your throne _____

(Cmaj7) (A9/C#) (F#/A#) (F#) (B) (B/A) (Em/G) (B7/F#)
E♭maj7 C9/E A/C# A D D/C Gm/B♭ D7/A



1. up - on the cher-u-bim, _____ shine forth. _____

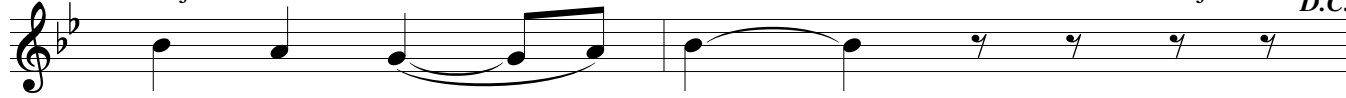
(Em) (D/F#) (G) (Cmaj13) (F13)
Gm F/A B♭ E♭maj13 A♭13



1. Rouse your pow'r, and come to save _____ us, _____

(Cmaj7) (D/E) (Am7) (D13(b9)) (Gsus4) (G) (Am7) (Bm7) (Cmaj7) (D7)
E♭maj7 F/G Cm7 F13(b9) Bbsus4 B♭ Cm7 Dm7 E♭maj7 F7

D.C.



1. come and save _____ us. _____

Text: Psalm 80:2-3, 15-16, 18-19. Refrain © 1969, 1981, ICEL. All rights reserved. Used with permission. Verses © 1970, CCD. All rights reserved. Used with permission. Music: Leon C. Roberts, 1950-1999, © 1996, Leon C. Roberts. Published by OCP. All rights reserved.

VERSE 2: Cantor

(Em) (F#°7/E) (F#°7/E) (Em) (D/E)
 Gm A°7/G A°7/G Gm F/G

2. Once a-gain, O LORD of hosts, look down from heav-en, and see;

(Cmaj7) (A9/C#) (F#/A#) (F#) (B) (B/A) (Em/G) (B7/F#)
 Ebmaj7 C9/E A/C# A D D/C Gm/Bb D7/A

2. take care of this vine, and pro-

(Em) (D/F#) (G) (Cmaj13) (F13)
 Gm F/A Bb Ebmaj13 Ab13

2. tect, pro- tect what your right hand has plant-ed, the

(Cmaj7) (D/E) (Am7) (D13(b9)) (Gsus4) (G) (Am7) (Bm7) (Cmaj7) (D7)
 Ebmaj7 F/G Cm7 F13(b9) Bbsus4 Bb Cm7 Dm7 Ebmaj7 F7 D.C.

2. son of man whom you your-self made strong.

VERSE 3: Cantor

(Em) (F#°7/E) (F#°7/E) (Em) (D/E)
 Gm A°7/G A°7/G Gm F/G

3. May your help be with the man of your right hand, with the

(Cmaj7) (A9/C#) (F#/A#) (F#) (B) (B/A) (Em/G) (B7/F#)
 Ebmaj7 C9/E A/C# A D D/C Gm/Bb D7/A

3. son of man whom you your-self made strong.

(Em) (D/F#) (G) (Cmaj13) (F13)
 Gm F/A Bb Ebmaj13 Ab13

3. Then we will no more with-draw from you; give us new

(Cmaj7) (D/E) (Am7) (D13(b9)) (Gsus4) (G) (Am7) (Bm7) (Cmaj7) (D7)
 Ebmaj7 F/G Cm7 F13(b9) Bbsus4 Bb Cm7 Dm7 Ebmaj7 F7 D.C. al fine

3. life, and we will call up-on your name.