

# O LITTLE TOWN OF BETHLEHEM

F F°7 F Bb Gm F/C C7 F

1. O lit - tle town of Beth - le - hem, How still we — see thee lie!  
 2. For Christ is born of Ma - ry, And gath - ered — all a - bove,  
 3. How si - lent - ly, how — len - ly, he won - drous — gift is giv'n!  
 4. O ho - ly Child of Beth - le - hem! De - scend to — us, we pray;

D7 Gm F/C C7 F

1. A - bove thy deep and dream - sleep The si - lent — stars go by;  
 2. While mor - tals sleep, the an - gels — Their watch of — won - d'ring love.  
 3. So God im - parts to hu - man hearts The bless - ings — of his heav'n.  
 4. Cast out our sin and en - ter — Be born in — us to - day.

Gm A Dm Gm7 A

1. Yet in thy dark streets s — ev - er - last - ing Light;  
 2. O morn - ing stars, to - geth - er Pro - claim the ho - ly birth!  
 3. No ear may hear his com - ing, But in this world of sin,  
 4. We hear the Christ - mas an - The great glad tid - ings tell;

F F°7 F Bb Gm F/C C F

1. The hopes and fears of all the years — we met in thee to - night.  
 2. And prais - es sing to God the King, And peace to all on earth.  
 3. Where meek souls will re - ceive him, still The dear Christ en - ters in.  
 4. O come to us, a - bid with us, Our Lord Em - man - u - el!

Note: When guitar and keyboard play together, keyboardists should improvise using the guitar chords above the melody.

Text: 86 86 76 86; Phillips C. Brooks, 1835–1893, alt.  
 Music: ST. LOUIS; Lewis H. Redner, 1831–1908.

# O LITTLE TOWN OF BETHLEHEM

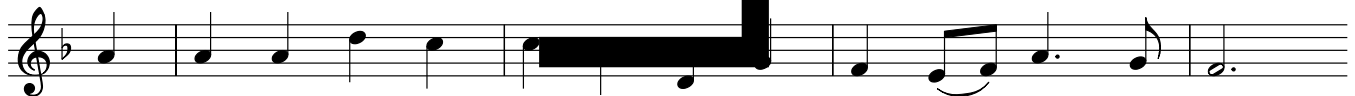
Capo 3: (D) F (D°7) F°7 (D) F (G) Bb (Em) Gm (D/A) F/C (A7) C7 (D) F



1. O lit - tle town of Beth - le - hem, How still we \_ see thee lie!  
 2. For Christ is born of Ma - ry, And gath - ered \_ all a - bove,  
 3. How si - lent - ly, how si - lent - ly, The won - drous \_ gift is giv'n!  
 4. O ho - ly Child of Beth - le - hem! De - scend to \_ us, we pray;

**W**

(B7) D7 (Em) Gm (D/A) F/C (A7) C7 (D) F



1. A - bove thy deep and dream - sleep The si - lent \_ stars go by;  
 2. While mor - tals sleep, the an - gels keep Their watch of \_ won - d'ring love.  
 3. So God im - parts to hu - man hearts The bless - ings \_ of his heav'n.  
 4. Cast out our sin and er - ror; Be born in \_ us to - day.

**E**

(Em) Gm (D) A (Bm) Dm (Em7) Gm7 (F#) A



1. Yet in thy dark streets shal - low - ly The ev - er - last - ing Light;  
 2. O morn - ing stars, to - geth - er Pro - claim the ho - ly birth!  
 3. No ear may hear his com - ing, But in this world of sin,  
 4. We hear the Christ - mas an - nounce - ment The great glad tid - ings tell;

**M**

(D) F (D°7) F°7 (D) F (G) Bb (Em) Gm (D/A) F/C (A) C (D) F



1. The hopes and fears of all the years are met in thee to - night.  
 2. And prais - es sing to God our King And peace to all on earth.  
 3. Where meek souls will re - ceive him, still The dear Christ en - ters in.  
 4. O come to us, a - bide with us, Our Lord Em - man - u - el!

**S**

Note: When guitar and keyboard play together, keyboardists should improvise using the guitar chords above the melody.

Text: 86 86 76 86; Phillips Brooks, 1835-1893, alt.  
 Music: ST. LOUIS; Lewis H. Redner, 1831-1908; guitar acc. © 1995, OCP. All rights reserved.

# O LITTLE TOWN OF BETHLEHEM

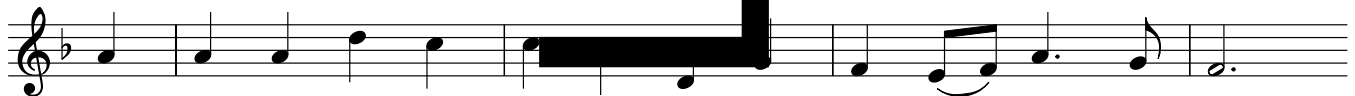
Capo 3: (D) F (D°7) F°7 (D) F (G) Bb (Em) Gm (D/A) F/C (A7) C7 (D) F



1. O lit - tle town of Beth - le - hem, How still we see thee lie!  
 2. For Christ is born of Ma - ry, And gath - ered all a - bove,  
 3. How si - lent - ly, how si - lent - ly, The won - drous gift is giv'n!  
 4. O ho - ly Child of Be - le - lem! De - scend to us, we pray;

**W**

(B7) D7 (Em) Gm (D/A) F/C (A7) C7 (D) F



1. A - bove thy deep and dream - sleep The si - lent stars go by;  
 2. While mor - tals sleep, the an - gels keep Their watch of won - d'ring love.  
 3. So God im - parts to hu - man hearts The bless - ings of his heav'n.  
 4. Cast out our sin and er - ror; Be born in us to - day.

**E**

(Em) Gm (D) A (Bm) Dm (Em7) Gm7 (F#) A



1. Yet in thy dark streets shin - eth The ev - er - last - ing Light;  
 2. O morn - ing stars, to - geth - er Pro - claim the ho - ly birth!  
 3. No ear may hear his com - ing, But in this world of sin,  
 4. We hear the Christ - mas an - gel's The great glad tid - ings tell;

**M**

(D) F (D°7) F°7 (D) F (G) Bb (Em) Gm (D/A) F/C (A) C (D) F



1. The hopes and fears of all the years are met in thee to - night.  
 2. And prais - es sing to God and King And peace to all on earth.  
 3. Where meek souls will re - ceive him, still The dear Christ en - ters in.  
 4. O come to us, a - bide with us, Our Lord Em - man - u - el!

**S**

**Note:** When guitar and keyboard play together, keyboardists should improvise using the guitar chords above the melody.

Text: 86 86 76 86; Phillips Brooks, 1835-1893, alt.  
 Music: ST. LOUIS; Lewis H. Redner, 1831-1908; guitar acc. © 1995, OCP. All rights reserved.

# O LITTLE TOWN OF BETHLEHEM

SOLO INSTRUMENT

The image displays a musical score for a solo instrument, titled "O Little Town of Bethlehem". The score is written in 4/4 time and consists of four staves of music. The first staff begins with a treble clef, a key signature of one flat (B-flat), and a 4/4 time signature. The music is marked with a piano (*p*) dynamic. The second staff continues the melody, marked with a mezzo-forte (*mf*) dynamic. The third staff features a mezzo-piano (*mp*) dynamic. The fourth staff concludes the piece, marked with a piano (*p*) dynamic. Large, bold, black vertical text "S A M E" is overlaid on the score, with the letters "S", "A", "M", and "E" positioned between the first, second, third, and fourth staves, respectively.

Music: ST. LOUIS; Lewis H. Redner, 1831–1908; arr. by Randall DeBruyn, b. 1947, © 1990, 1998, OCP. All rights reserved.