

O COME, DIVINE MESSIAH

VERSES

Chords: G C G G/B C Dsus4 D [D]

1. O come, di - vine Mes - si - ah; The world in si - lence waits — the day When
 2. O Christ, whom na - tions sigh for, Whom pries and proph - et long — fore-told, Come,
 3. You come in peace and meek - ness And low - ly will your cra - dle be; All

Chords: G C Em G/B D7 G

1. hope shall sing its tri - umph and sad - ness flee — a - way.
 2. break the cap - tive's fet - ters, Re - deem the long - lost fold.
 3. clothed in hu - man weak - ness Shall we your God - head see.

REFRAIN

Chords: Am Dsus4 D G G7 B7 Em C

Dear Sav - ior, haste! Come, come to earth. Dis - pel the

Chords: D C D Am C6 A/C# Dsus4 D

night and show your face, a - bid us hail the dawn of grace. O

Note: When guitar and keyboard play together, keyboardists should improvise using the guitar chords above the melody.

Text: 78 76 with refrain; Abbé Simon-Joseph Pellegrin, 1663–1745; tr. by Sr. Mary of St. Philip, 1825–1904.

Music: VENEZ, DIVIN MESSIE; trad. French Carol, 16th cent.; keyboard acc. by Randall DeBruyn, b. 1947, © 1990, OCP. All rights reserved.

come, di-vine Mes - si - ah; the world in si - lence waits — the day when

hope shall sing its tri - umph and ad - ness flee — a - way. ———

Chords: G, C, G, G/B, C, Dsus4, D, Bm, Em, C, G/B, D7, G

SAMPLE

O COME, DIVINE MESSIAH

VERSES

Chord progression: G C G G/B C Dsus4

1. O come, di - vine Mes - si - ah; The world in si - lence waits — the
2. O Christ, whom na - tions sigh for Whom priest and proph - et long — fore -
3. You come in peace and meek - ness And low - ly will your cra - dle

Chord progression: D [D] G C Em G/B D7 G

1. day When hope shall sing its tri - umph And sad - ness flee — a - way. —
2. told, Come, break the cap - tive's — deem the long - lost fold. —
3. be; All clothed in hu - man weak - ness Shall we your God - head see. —

REFRAIN

Chord progression: Am Dsus4 D G C Am B7 Em C

Dear Sav - ior, haste! — come to earth. Dis - pel the

Chord progression: D C D Am C6 A/C# Dsus4 D

night and show your face, and bid us hail the dawn of grace. — O

Chord progression: G C G G/B C Dsus4 D

come, di - vine Mes - si - ah; the world in si - lence waits — the day when

Chord progression: Bm Em C Gm B D7 G

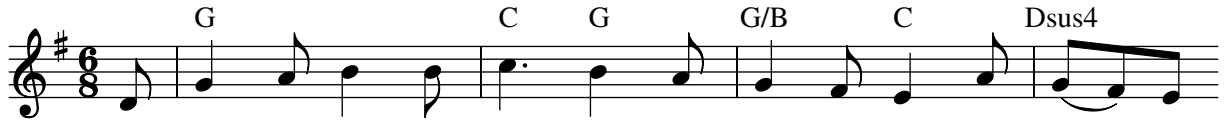
hope shall sing its tri - umph and sad - ness flee — a - way. —

Note: When guitar and keyboard play together, keyboardists should improvise using the guitar chords above the melody.

Text: 78 76 with refrain; Abbé Simon-Joseph Pellegrin, 1663–1745; tr. by Sr. Mary of St. Philip, 1825–1904.
Music: VENEZ, DIVIN MESSIE; trad. French Carol, 16th cent.; guitar acc. © 1995, OCP. All rights reserved.

O COME, DIVINE MESSIAH

VERSES



1. O come, di - vine Mes - si - ah; The world in si - lence waits — the
2. O Christ, whom na - tions sigh for Whom priest and proph - et long — fore -
3. You come in peace and meek - ness And low - ly will your cra - dle



1. day When hope shall sing its tri - umph And sad - ness flee — a - way. —
2. told, Come, break the cap - tive's — deem the long - lost fold. —
3. be; All clothed in hu - man weak - ness Shall we your God - head see. —

REFRAIN



Dear Sav - ior, haste! — come to earth. Dis - pel the



night and show your face, and bid us hail the dawn of grace. — O



come, di - vine Mes - si - ah; the world in si - lence waits — the day when



hope shall sing its tri - umph and sad - ness flee — a - way. —

Note: When guitar and keyboard play together, keyboardists should improvise using the guitar chords above the melody.

Text: 78 76 with refrain; Abbé Simon-Joseph Pellegrin, 1663–1745; tr. by Sr. Mary of St. Philip, 1825–1904.
Music: VENEZ, DIVIN MESSIE; trad. French Carol, 16th cent.; guitar acc. © 1995, OCP. All rights reserved.

O COME, DIVINE MESSIAH

SOLO INSTRUMENT: Use with keyboard edition only.

VERSES 1-3

REFRAIN

Music: VENEZ, DIVIN MESSIE; trad. French Carol, 16th cent.; arr. by Randall DeBruyn, b. 1947, © 1990, OCP. All rights reserved.

SOLO INSTRUMENT: Use with guitar edition only.

VERSES 1-3

Musical notation for the first staff, starting with a treble clef, a sharp key signature, and a 6/8 time signature. The melody begins with a quarter rest followed by a dotted quarter note G4, then an eighth note F4, and continues with eighth and quarter notes. A dynamic marking of *mp* is placed below the staff.

Musical notation for the first staff of the Refrain section. It begins with a treble clef, a sharp key signature, and a 6/8 time signature. The melody starts with eighth notes and a quarter note. A dynamic marking of *mp* is placed below the staff. A large black letter 'H' is superimposed over the music.

Musical notation for the second staff of the Refrain section. The melody continues with eighth and quarter notes. Dynamic markings of *mf* and *f* are placed below the staff. A large black letter 'L' is superimposed over the music.

Musical notation for the third staff of the Refrain section. The melody continues with quarter and eighth notes. Dynamic markings of *mp* and *mf* are placed below the staff. A large black letter 'E' is superimposed over the music.

Musical notation for the fourth staff of the Refrain section. The melody concludes with quarter notes and a dotted quarter note. A dynamic marking of *mp* is placed below the staff. A large black letter 'N' is superimposed over the music.

Music: VENEZ, DIVIN MESSIE; trad. French Carol, 16th cent.; arr. by Randall D. Thomas. 1947, © 1990, OCP. All rights reserved.

H
L
E
N
S
A
M
S