

LIVES BROUGHT TOGETHER

VERSES *Lively* (♩ = ca. 76)

Capo 1: (D)

mp E♭

(G/D)
A♭/E♭

(D)
E♭



1. Lives brought to- geth - er this ho - ly day:
2. Two come to- geth - er; they leave as one.
3. Car - ry the trea - sure to all the poor.

(D)
E♭

(D/C#)
E♭/D

(G/B)
A♭/C

(D/A)
E♭/B♭

(Em)
Fm

(A)
B♭



1. a man and wom - an tell the love God has made.
2. They reap the har - vest of the seed God has sown.
3. Give of the rich - es of the love you have known.

(Em)
Fm

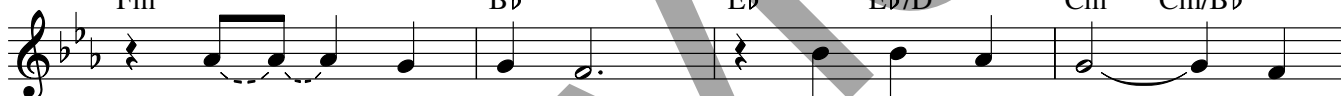
(A)
B♭

(D)
E♭

(D/C#)
E♭/D

(Bm)
Cm

(Bm/A)
Cm/B♭



1. The life ___ they prom - ise will light our way, ___ for
2. In ___ times of sor - row, when night is long, ___ the
3. The world ___ is hun - gry for what you've known: ___ the

(G)
A♭

(G/F#)
A♭/G

(Em)
Fm

(A)
B♭

(D)
E♭
cresc.

(G/D)
A♭/E♭

(D)
E♭

(G/D)
A♭/E♭



1. love has been born this day. _____
2. love of the Lord will stay. _____
3. love of our God this day. _____

REFRAIN

(D)
f E♭

(G/D)
A♭/E♭

(D)
E♭

(Em)
Fm

(A)
B♭



Lord, may your love be the mel - o - dy we

Text and music: Dan Schutte, b. 1947, © 1992, Daniel L. Schutte. Published by OCP Publications. All rights reserved.

(D) (D/C#) (G/B) (D/A) (Em) (A)
 Eb Eb/D Ab/C Eb/Bb Fm Bb

sing, _____ be the har - mo - ny _____ we

(D) (D/C#) (Bm) (Bm/A) 1, 2 (G) (G/F#) (Em) (A) (D)
 Eb Eb/D Cm Cm/Bb Ab Ab/G Fm Bb Eb

bring to our days, _____ and the strength _____ of our ways. _____

(G/D) (D) (G/D) Final (G) (G/F#) (Em)
 Ab/Eb Eb Ab/Eb Ab Bb Fm

D.C.

and the strength _____

(A) (D) (D/C#) (G/B) (D) (D/C#)
 Bb Eb Eb/D Ab/C Eb Eb/D

_____ of our ways. _____

(G/B) (D) (D/C#) (G/B) (A) (D) (G/D) (D)
 Ab/C Eb Eb/D Ab/C Bb Eb Ab/Eb Eb
