

COME, WORSHIP THE LORD

FLUTE

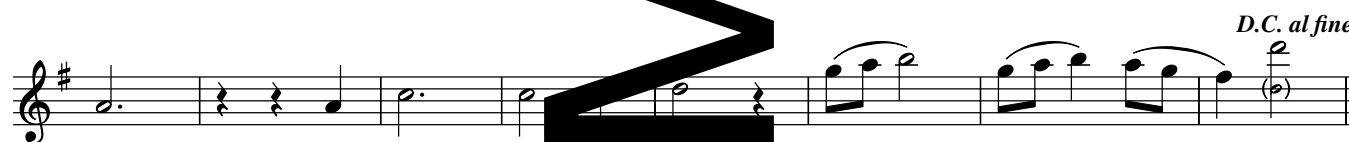
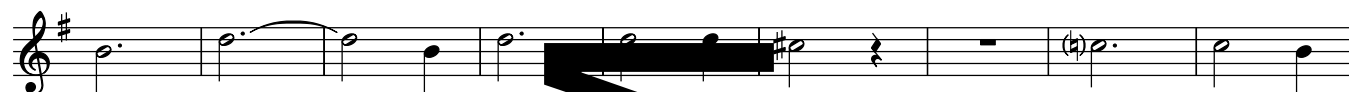
REFRAIN: (♩ = ca. 104) *Tacet 1st time*



VERSES 1, 2



VERSE 3



Music: John Michael Talbot, b. 1954; arr. by Phil Perkins and Rick Modlin, b. 1966, © 1980, 1981 Birdwing Music/BMG Songs. All rights reserved.
Administered by EMI CMG Publishing. Used with permission.

W
E
R
N
A
S

REFRAIN: (♩ = ca. 104) Tacet 1st two times

Musical notation for the Refrain, first two times tacet. The notation is in bass clef, key of D major (one sharp), and 3/4 time. It begins with a double bar line and a fermata, followed by a '2' indicating a second ending. The melody is marked 'legato'.

VERSES 1, 2: Tacet

Fine 18 D.C.

Musical notation for Verses 1 and 2, tacet. The notation is in bass clef, key of D major, and 3/4 time. It ends with a double bar line, a fermata, and the instruction 'Fine 18 D.C.'.

VERSE 3

Musical notation for Verse 3, first line. The notation is in bass clef, key of D major, and 3/4 time. It begins with a double bar line and a fermata, followed by the melody.

Musical notation for Verse 3, second line. The notation is in bass clef, key of D major, and 3/4 time. It continues the melody from the first line.

Musical notation for Verse 3, third line. The notation is in bass clef, key of D major, and 3/4 time. It ends with a double bar line, a fermata, and the instruction 'D.C. al fine'.

Music: John Michael Talbot, b. 1954; arr. by Phil Perkins and Rick Modlin, b. 1966 © 1995, Birdwing Music/BMG Songs. All rights reserved.
Administered by EMI CMG Publishing. Used with permission.

WELLS BURN SAMS