

# You Are My Shepherd

(Guitar/Vocal)

Based on Psalm 23

Tom Booth

## INTRO/INTERLUDE (♩ = ca. 72)

Capo 3: \* (NC/A) (A) (G) (D) \* (NC/A) (Em) (D) (A)  
 \* NC/C C B♭ F \* NC/C Gm F C

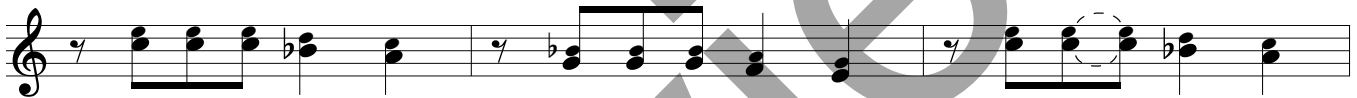


\* (NC/A) (A) (G) (D) (Em) (D) (A)  
 \* NC/C C B♭ F Gm F C



## VERSES

\* (NC/A) (A) (G) (D) \* (NC/A) (Em) (D) (A) \* (NC/A) (A) (G) (D)  
 \* NC/C C B♭ F \* NC/C Gm F C \* NC/C C B♭ F



1. You are my shep - herd, and how I love you. You are the on - ly  
 2. You are my shep - herd, whom I have fol - lowed. To safe - wa - ters  
 3. You set a ta - ble all be - fore me, you bless my head with

(Em) (D) (A) \* (NC/A) (A) (G) (D) \* (NC/A) (Em) (D) (A)  
 Gm F C \* NC/C C B♭ F \* NC/C Gm F C to Coda ⊕



1. way for \_\_\_ me. You are my shep - herd, so I will fol - low;  
 2. you lead \_\_\_ me. You give me cour - age and strength with - in me.  
 3. ho - ly \_\_\_ oil. Cup o - ver - flow - ing, my heart is know - ing,

(G) (A) (A) (A)  
 B♭ (Bm7/F#) (A) (A) (A)  
 Dm7/A C D.C. Dm7/A C



1. you on - ly want what's right for me. 2. path to thee, \_\_\_  
 2. You guide me on the

(G) (F) (A) \* (NC/A) (A) (G) (D) \* (NC/A) (Em) (D) (A)  
 B♭ A♭ C \* NC/C C B♭ F \* NC/C Gm F C



2. your name for - ev - er Glo - ry Be. \_\_\_

© 2007, Tom Booth. Published by spiritandsong.com®, a division of OCP, 5536 NE Hassalo, Portland, OR 97213. All rights reserved.

\* = let bass note ring

NC = No Chord

Recorded in D♭ with a tuning of D♭, A♭, D♭, G♭, B♭, E♭

21128-Z2

Edition #90119

**BRIDGE**

(G) (D/F#) (A)  
 Bb F/A C

E - ven though I walk through the dark - ness, I will fear no

(G)  
 Bb

harm. E - ven though I walk through the val -

(D/F#) (F6) (Gsus2)  
 F/A Ab6 Bbsus2

- ley, I will fear no harm for you are at my side. *D.C. al Coda*

⊕ CODA

(G) (Bm7/F#) (A) (G)  
 Bb Dm7/A C Bb

3. good - ness and love are mine for life. — I will dwell with

(Bm7/F#) (A) (G) (Bm7/F#) (A)  
 Dm7/A C Bb Dm7/A C

3. you till the end of time. — Good - ness and love are mine for life. —

(G) (F) (G add9) \* (NC/A) (A) (G) (D)  
 Bb Ab Bbadd9 \* NC/C C Bb F

3. I will dwell with you till the end — of time.

\* (NC/A) (Em) (D) (A) \* (NC/A) (A) (G) (D) (Em) (Dm) (A)  
 \* NC/C Gm F C \* NC/C C Bb F Gm Fm C

*rit.*