

How Can I Repay

Based on Psalm 116

Dan Schutte
Arranged by Gerard Chiusano

INTRO *Moderato* (♩ = ca. 108)

Chords: F, C/F, B♭, Gm, Gm7/C

Keyboard

REFRAIN: 1st time: Cantor, All repeat; thereafter: All

Descant

Soprano

Alto

Baritone

Chords: Csus4, C, F, C/F, B♭, C

© 2007, Daniel L. Schutte. Published by OCP, 5536 NE Hassalo, Portland, OR 97213. All rights reserved.

Parts for Flute and Oboe (edition 95877) are available online. Visit ocp.org.

20698-Z

Edition #30102946

kind - ness of the Lord? What song can I sing to the

Lord? What song can I sing to hon - or the

F C/E Dm Dm/C B \flat B \flat m F/C

hon - or of God?

name of God?

1	<i>D.S.</i>	2-6	to Verses	Final	<i>Fine</i>
---	-------------	-----	-----------	-------	-------------

Csus4 C F

1	<i>D.S.</i>	2-6	to Verses	Final	<i>Fine</i>
---	-------------	-----	-----------	-------	-------------

VERSES

1. When the dark - ness clos - es round me, and I long to see your
 2. As I walk a - mong the liv - ing, I de - pend up - on your
 3. You pro - vide for all who hun - ger with the boun - ty of your
 4. I re - ly up - on your good - ness, on your great and ten - der
 5. As I stand be - fore the peo - ple, I will raise the cup of

A/C# Dm Dm/C G/B G

1. morn - ing, then you lean your face be - side me and
 2. kind - ness to up - hold my ev - 'ry foot - step and
 3. bless - ing, for the lives of your be - lov - ed are
 4. mer - cy, to pro - tect me on my jour - ney and
 5. glad - ness, and I vow to love and serve you the

C C/Bb F/A Bb Bb/A

D.S.

1. whis - per my — name.
2. dry ev - 'ry — tear.
3. dear to your — heart.
4. raise me from — death.
5. rest of my — days.

The vocal line consists of two staves, treble and bass clef, with lyrics written below. The melody is simple and homophonic, with lyrics aligned under the notes.

D.S.

Gm F/A Gm/B \flat Csus4 C

The keyboard accompaniment is shown in grand staff notation. The right hand plays chords and single notes, while the left hand plays a rhythmic accompaniment of eighth notes. Chord symbols are placed above the right-hand staff.

Preview

How Can I Repay

(Guitar/Vocal)

Dan Schutte

Descant by Gerard Chiusano

Based on Psalm 116

INTRO *Moderato* (♩ = ca. 108)

Capo 3: (D) F (A/D) C/F (G) B♭ (Em7/A) Gm7/C (Asus4) Csus4 (A) C

(Keyboard)

♩ REFRAIN: 1st time: Cantor, All repeat; thereafter: All

Descant

How can I re - pay the kind - ness of the

(D) F (A/D) C/F (G) B♭ (A) C (D) F (A/C#) C/E

Melody

How can I re - pay the kind - ness of the Lord? What

Lord? What song can I sing to the hon - or of

(Bm) Dm (Bm/A) Dm/C (G) B♭ (Gm) B♭m (D/A) F/C (Asus4) Csus4 (A) C

song can I sing to hon - or the name of

1	D.S.	2-6	Final
		to Verses	Fine

God?

(D) F	1	D.S.	2-6	Final
			to Verses	Fine

God?

© 2007, Daniel L. Schutte. Published by OCP, 5536 NE Hassalo, Portland, OR 97213. All rights reserved.

VERSES

(F#/A#)
A/C#

(Bm)
Dm

(Bm/A)
Dm/C

1. When the dark - ness clos - es round me, and I
 2. As I walk a - mong the liv - ing, I de -
 3. You pro - vide for all who hun - ger with the
 4. I re - ly up - on your good - ness, on your
 5. As I stand be - fore the peo - ple, I will

(E/G#)
G/B

(E)
G

(A)
C

(A/G)
C/Bb

(D/F#)
F/A

1. long to see your morn - ing, then you lean your face be -
 2. pend up - on your kind - ness to up - hold my ev - 'ry
 3. boun - ty of your bless - ing, for the lives of your be -
 4. great and ten - der mer - cy, to pro - tect me on my
 5. raise the cup of glad - ness, and I vow to love and

(G)
Bb

(G/F#)
Bb/A

(Em)
Gm

(D/F#)
F/A

(Em/G)
Gm/Bb

(Asus4)
Csus4

(A)
C

D.S.

1. side me and whis - per my name.
 2. foot - step and dry ev - 'ry tear.
 3. lov - ed are dear to your heart.
 4. jour - ney and raise me from death.
 5. serve you the rest of my days.

How Can I Repay

Based on Psalm 116, this piece has a simple refrain-verse form. It is essentially a song of gratitude to God for the many ways the Lord has blessed and protected us. The verses detail the wonderful things God has done and continues to do for us.

This piece is straightforward and the accompaniment works well with either piano or guitar. If guitar is used, in order to match the mood of the piece, a fingerpicking pattern is preferred over strumming.

Although there are SAB parts, a cantor could sing the verses. Careful articulation of the words is crucial when the assembly is not singing but, rather, praying as the songs are sung. If people cannot understand the words, it makes it almost impossible for them to enter into the prayer. The SAB harmony on the refrains can effectively give support and interest to the assembly singing. A descant is included that can be added for the final refrain to add interest once the assembly is singing confidently.

The most obvious use for this piece is as a responsorial psalm on Holy Thursday. Additionally, because of their simple refrains, psalms can be very effective for the Communion procession, when people are not likely to carry books as they walk. It would be ideal for a Thanksgiving liturgy or funeral liturgy.

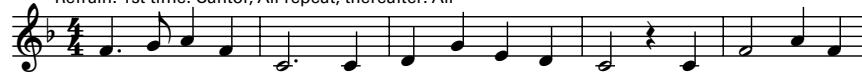
Parts for Flute and Oboe (edition 95877) are available online. Visit ocp.org.

Assembly Edition

HOW CAN I REPAY

Dan Schutte

Refrain: 1st time: Cantor, All repeat; thereafter: All



How can I re - pay the kind - ness of the Lord? What song can I



sing to hon - or the name of God?

Verses



1. When the dark - ness clos - es round me, and I
2. As I walk a - mong the liv - ing, I de -
3. You pro - vide for all who hun - ger with the
4. I re - ly up - on your good - ness, on your
5. As I stand be - fore the peo - ple, I will



1. long to see your morn - ing, then you lean your face be -
2. pend up - on your kind - ness to up - hold my ev - 'ry
3. boun - ty of your bless - ing, for the lives of your be -
4. great and ten - der mer - cy, to pro - tect me on my
5. raise the cup of glad - ness, and I vow to love and



1. side me and whis - per my name.
2. foot - step and dry ev - 'ry tear.
3. lov - ed are dear to your heart.
4. jour - ney and raise me from death.
5. serve you the rest of my days.

Text: Based on Psalm 116. Text and music © 2007, Daniel L. Schutte.
Published by OCP, 5536 NE Hassalo, Portland, OR 97213. All rights reserved.

For reprint permissions, please visit OneLicense.net or contact us at 1-800-663-1501.