



80092

Be with Me Lord

Michael Joncas

SATB

Organ, Guitar, Flute, Oboe

The attached sheet music is copyrighted material and is protected under United States and international copyright laws. A written license is required before reproducing any copyrighted material in any format. A separate purchase is required for each copy of this sheet music. An OCP receipt serves as verification of purchase and limited permission to photocopy/print the stated number of copies.

Be With Me, Lord

Psalm 91:15, 1-2, 10-16

Michael Joncas
Organ Accompaniment by Craig S. Kingsbury

INTRO: (♩ = ca. 108)

Organ

The organ introduction is written for a grand staff in 6/4 time, featuring a key signature of one flat (B-flat major). It begins with a piano (*p*) dynamic. The right hand plays a melodic line with eighth and quarter notes, while the left hand provides a steady accompaniment of quarter notes. The piece concludes with a final chord.

REFRAIN: 1st time: Cantor; Each time thereafter: All

p unison

The first system of the refrain features a unison vocal line and organ accompaniment. The vocal line begins with a rest, followed by the lyrics "Be with me, Lord; be with me,". The organ accompaniment consists of a steady eighth-note accompaniment in the left hand and a melodic line in the right hand. The system ends with a repeat sign.

The second system of the refrain continues the unison vocal line and organ accompaniment. The vocal line has the lyrics "Lord, when I am in trou-ble and need." followed by a long horizontal line indicating a breath or a pause. The organ accompaniment continues with the same pattern as the first system, ending with a final chord.

© 1981, 1982, Jan Michael Joncas Trust. Published by OCP, 5536 NE Hassalo, Portland, OR 97213. All rights reserved.

REFRAIN: All:
Soprano/Melody

mp

Be with me, Lord; be with me, Lord, ___ when

mp

I am in trou - ble and need. ___

VERSE 2: Cantor

p
2. E - vil shall nev - er be - fall you, _____ nor af - flic - tion come

p

Detailed description: This system contains the first two measures of the verse. The Cantor part is in a single treble clef with a key signature of one flat (B-flat). It begins with a piano (*p*) dynamic. The lyrics are "E - vil shall nev - er be - fall you, _____ nor af - flic - tion come". The piano accompaniment consists of two staves (treble and bass clefs) with a piano (*p*) dynamic. The right hand plays chords and moving lines, while the left hand provides a steady accompaniment with some sustained notes.

cresc. *mp*
2. near to your tent. _____ Un - to his an - gels he's

cresc. *mp*

Detailed description: This system contains the next two measures. The Cantor part continues with a crescendo (*cresc.*) leading to a mezzo-piano (*mp*) dynamic. The lyrics are "near to your tent. _____ Un - to his an - gels he's". The piano accompaniment also features a crescendo (*cresc.*) and mezzo-piano (*mp*) dynamic. The right hand has sustained chords and moving lines, while the left hand continues with a steady accompaniment.

cresc. *mf* *dim.*
2. giv - en com - mand to guard you in all your ways. _____

cresc. *mf* *dim.*

Detailed description: This system contains the final two measures of the verse. The Cantor part has a crescendo (*cresc.*) to mezzo-forte (*mf*) and then a decrescendo (*dim.*). The lyrics are "giv - en com - mand to guard you in all your ways. _____". The piano accompaniment follows the same dynamic markings: crescendo (*cresc.*) to mezzo-forte (*mf*) and then decrescendo (*dim.*).

REFRAIN: All

Soprano/Melody

mp

Alto

Be with me, Lord; be with me, Lord, when

Tenor

Bass

mp

I am in trou - ble and need.

VERSE 3: Cantor, Altos & Tenors

Cantor
mp

3. On their hands the an - gels will bear you up, lest you dash your

Alto
mp

3. On their hands the an - gels will bear you up, lest you dash your

Tenor
mp

cresc. ----- *mf*

3. foot 'gainst a stone. _____ Li - on or vi - per might

cresc. ----- *mf*

3. foot 'gainst a stone. _____ Li - on or vi - per might

cresc. ----- *mf*

3. strike at your life, but you will not come to harm.

cresc. *f* *dim.*

3. strike at your life, but you will not come to harm.

cresc. *f* *dim.*

cresc. *f* *dim.*

REFRAIN: All

Cantor
mf
Be with me, Lord; be with me, Lord, when

Soprano
mf
Be with me, Lord,

Alto
Be with me, Lord; be with me, Lord, when

Tenor
mf

Bass
Be with me:

mf

I am in trou - ble and need.

I am in trou - ble and need.

I am in trou - ble and need.

The first system consists of four staves. The top three staves are vocal parts: Soprano, Alto, and Tenor. The bottom two staves are piano accompaniment. The lyrics are "I am in trou - ble and need." repeated for each voice part. The music is in a minor key with a common time signature.

VERSE 4:

Soprano
mf

Alto

4. Cling to the Lord and he'll sure - ly de - liv - er you;

Tenor

Bass *mf*

mf

The second system features vocal parts and piano accompaniment. It includes parts for Soprano, Alto, Tenor, and Bass. The lyrics are "4. Cling to the Lord and he'll sure - ly de - liv - er you;". The piano part is marked *mf*. The music continues in the same key and time signature as the first system.

Melody

cresc.----- ***f***

4. he rais-es up all who call on his name. He will bring joy to your

cresc.----- ***f***

cresc.----- ***f***

dim.-----

4. hearts ___ and _ bless you with peace in all your days. _____

dim.-----

dim.-----

FINAL REFRAIN: All

mf unison

Be with me, Lord; be with me, Lord, when I am in

mf

trou - ble and need. _____

p

Fine

rit.

Be With Me, Lord

(Guitar/Vocal)

Psalms 91:15, 1-2, 10-16

Michael Joncas

INTRO: (♩ = ca. 108)

Capo 1: (E) (A) (F#m) (B7) (C#m) (Am) (E)
 F Bb Gm C7 Dm Bbm F

REFRAIN: 1st time: Cantor; Each time thereafter: All

1 (E) (A) (F#m) (B7) (C#m) (Am) (E)
 p F Bb Gm C7 Dm Bbm F D.S.

Be with me, Lord; be with me, Lord, when I am in trou-ble and need. ____

2-5 (E) to Verses (E) (A) (F#m) (B7) (C#m) (Am) (E)
 F F Bb Gm C7 Dm Bbm rit. F Fine

need. ____ need. ____

VERSE 1:

(E) (Am6) (E)
 p F Bbm6 F

1. You who dwell in the shel-ter of God, Most High, who a-bide in Al-

(Am6) (F) (F#°)
 Bbm6 Gb G°
 cresc. mp

1. might - y's shade, ____ say to the Lord: ____ "My

(Em) (C) (Am) (F#°) (B7sus4) (B7)
 Fm Db Bbm G° Csus4 C7
 cresc. mf dim. D.S.

1. ref - uge, my strong - hold, my God, in whom I trust!"

VERSE 2: Cantor

(E) (Am6) (E)
 p F Bbm6 F

2. E - vil shall nev - er be - fall you, ____ nor af - flic - tion come

(Am6) (F) (F#°)
Bbm6 Gb G°
cresc.

2. near to your tent. _____ Un - to his an - gels he's

(Em) (C) (Am) (F#°) (B7sus4) (B7)
Fm Db Bbm G° C7sus4 C7
cresc. *mf* *dim.* *D.S.*

2. giv - en com-mand to guard you in all your ways. _____

VERSE 3:

(E) (Am6) (E)
F Bbm6 F
mp

3. On their hands the an - gels will bear you up, lest you dash your

(Am6) (F) (F#°)
Bbm6 Gb G°
cresc. *mf*

3. foot 'gainst a stone. _____ Li - on or vi - per might

(Em) (C) (Am) (F#°) (B7sus4) (B7)
Fm Db Bbm G° C7sus4 C7
cresc. *f dim.* *D.S.*

3. strike _ at your life, but you will not come _ to harm. _____

VERSE 4:

(Am) (D) (Gmaj7) (C) (F)
Bbm Eb Abmaj7 Db Gb
mf

4. Cling to the Lord and he'll sure - ly de - liv - er you; he rais - es

(Dm7) (E) (E7) (Am) (D)
Eb7 F F7 Bbm Eb
cresc. *f*

4. up all who call on his name. He will bring joy to your

(Gmaj7) (C) (Am) (F#°) (B7sus4) (B7)
Abmaj7 Db Bbm G° C7sus4 C7
dim. *D.S.*

4. hearts and bless you with peace in all your days. _____

Be With Me, Lord

FLUTE

Michael Joncas

INTRO: *Lyrical* (♩ = ca. 108)

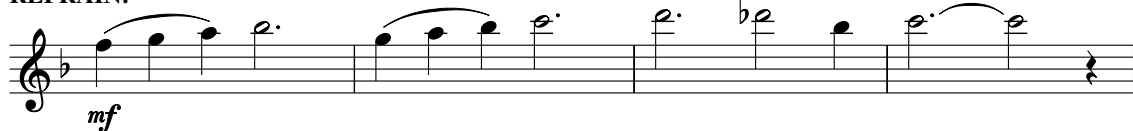


REFRAIN: *Tacet*

VERSE 1:



REFRAIN:

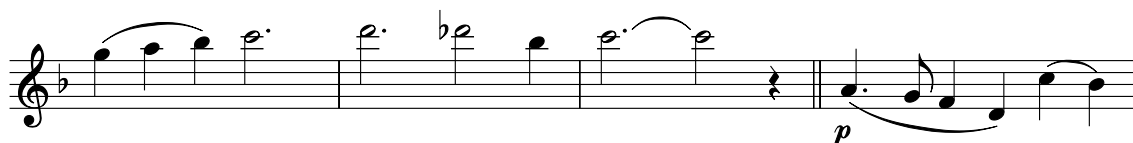
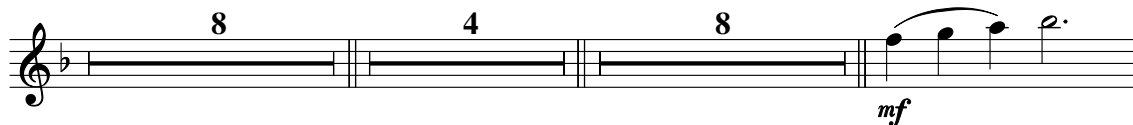


VERSE 3: *Tacet*

REFRAIN: *Tacet*

VERSE 4: *Tacet*

FINAL REFRAIN:



Be With Me, Lord

OBOE

Michael Joncas

INTRO: *Lyrical* (♩ = ca. 108)

REFRAIN: *Tacet*

VERSE 1: *Tacet*

REFRAIN: *Tacet*

VERSE 2:

REFRAIN:

VERSE 3: *Tacet*

REFRAIN: *Tacet*

VERSE 4: *Tacet*

FINAL REFRAIN:

Assembly Edition

BE WITH ME, LORD

Michael Joncas

Refrain
 Be with me, Lord; be with me, Lord, when I am in trouble and need.

Verse 1
 1. You who dwell in the shelter of God, Most High, who a-bide in Al-might - y's shade, say to the Lord: "My re - fuge, my strong-hold, my God in whom I trust."

Verse 2
 2. E - vil shall nev - er be - fall you, nor af - flic-tion come near to your tent. Un - to his an-gels he's giv - en com-mand to guard you all in your ways.

to Refrain

Text: Psalm 91:15, 1-2, 10-16. Text and music © 1981, 1992, Jan Michael Joncas Trust. Published by OCP, 5536 NE Hassalo, Portland, OR 97213. All rights reserved.

BE WITH ME, LORD (continued)

Verse 3
 3. On their hands the an - gels will bear you up, lest you dash your foot 'gainst a stone. Li - on or vi - per might strike at your life, but you will not come to harm.

Verse 4
 4. Cling to the Lord and he'll sure - ly de - liv - er you; he rais - es up all who call on his name. He will bring joy to your hearts and bless you with peace in all your days.

to Refrain

For reprint permissions, please visit OneLicense.net or contact us at 1-800-663-1501.